

The British Orchid Council Year Book 2014



**An Essential Guide
for all
Orchid Enthusiasts**

Last update: 01/07/2014



EUROPEAN ORCHID CONFERENCE & SHOW

LONDON 9–12 APRIL 2015

PREVIEW EVENING 8 APRIL

Hosted by



Sharing the best in Gardening

eoclondon2015.org.uk



RHS Registered Charity No: 222879/SC038262

Contents

- 4 BOC Information
- 5 Culture Sheets
- 20 British Orchid Nurseries
- 26 BOC Photographic Competition 2012
- 27 Diary of Events
- 32 RHS Orchid Committee Programme and
Dates for BOC Judging Symposiums
- 35 Members of the BOC
- 44 Orchid National Collections

Front cover: *Phragmipedium kovachii*, the species that has created a great deal of excitement in recent years. This one was exhibited by John Gay and won 'Best Phragmipedium' at the EMOS Show in September. For most people it was their first chance to see the real thing. I have seen many photographs, all big but not always beautiful. I thought this one was outstanding.



There is a digital version of this Yearbook online. Contact Details and the Diary of Events will be updated during the year.

Look for the link on the BOC Database at -

<http://www.british-orchid-council.info>

Editor: Chris Barker. Email: cjbandjb@ntlworld.com

The British Orchid Council

The British Orchid Council brings together amateurs, commercial growers and the scientific community in a single forum. Membership currently comprises the fifty or so British Orchid Societies, the British Orchid Growers' Association, National Botanic Gardens maintaining significant orchid collections at Kew and Glasgow, the Eric Young Orchid Foundation in Jersey and the Royal Horticultural Society, with its major collection at Wisley.

The Council is a registered charity, the main objectives of which may be summarised as promoting and broadening the knowledge of orchids and encouraging excellence in their culture. It organises British Orchid Congresses in different parts of the country every eighteen months, maintains a training programme for internationally recognised show judges, represents its members on both European and International bodies and has a strong commitment to conservation.

President

Mr Max Hopkinson

5 Golf Road, Radcliffe on Trent, Nottingham NG12 2GA

Tel: 0115 9123095 Email: maxhoppycat@aol.com

Chairman

Mr Chris Barker

17 Surbiton Road

Stockton-on-Tees TS18 5PZ

Tel: 01642 654748

Email: cjbandjb@ntlworld.com

Hon. Secretary

Mrs Pat McLean

3, Springfield Avenue,

Eighton Banks,

Gateshead NE9 7HL

Tel: 0191 4879515

Email: mcleanpatriciaaw@yahoo.co.uk

Vice Chairman

Lady Samantha Hurley

17, Veronica Road

London SW17 8QL

Tel: 079000 250247

Email: sam@ballyhurley.com

Hon. Treasurer

Mr Arthur Deakin

Pomarium Cottage

Back Lane, Halam

Notts NG22 8AG

Tel: 01636 819974

Email: arthurlomasdeakin@yahoo.co.uk

Minutes Secretary

Mr Rod Wells

15 Lapwing Close, Northway, Tewkesbury, Glos. GL20 8TN

Tel: 01684 294485 Email: secretary@cheltenhamorchids.org

CULTURE ORCHIDS AS HOUSEPLANTS

The types of orchids that we grow in our greenhouses, conservatories or in the home would naturally grow in rainforests all over the world. We try to recreate these conditions to get the best from our plants and this need not be as hard as you think!

TEMPERATURE: Orchids usually fall into 1 of 3 categories - **cool**, **intermediate** or **warm** - here is a guide to the temperatures:

| | | |
|----------------------|----------------------------|----------------------------|
| Cool: | winter minimum 10°C (50°F) | summer maximum 22°C (75°F) |
| Intermediate: | winter minimum 12°C (55°F) | summer maximum 25°C (80°F) |
| Warm: | winter minimum 18°C (65°F) | summer maximum 27°C (85°F) |

The winter minimum temperatures are more vital for night-time and it is natural for there to be a rise and fall between day and night and between the seasons.

LIGHT: Orchids do not like bright, in the rainforests only dappled light will reach them through the leafy canopy. Direct sun, especially in summer, can burn their leaves quite easily so keep them in dappled shade during the warmest months. In winter when the sun is not so strong, full light is fine and indeed necessary to help them to flower well the following season.

WATERING & HUMIDITY: Rainforests are naturally humid places so to create this at home you can grow other suitable companion plants such as ferns and air plants with your orchids. Misting the foliage and aerial roots several times a week, especially in warmer conditions will help the humidity. Take care when misting Phalaenopsis however that the water does not collect in the crown of the plant. Stand the pots on damp pebbles and the moisture will evaporate around the plants. When it comes to actually watering the plants, do not rely on them taking up water from underneath the pot as this can lead to the compost becoming too wet. Instead take your plant to the sink and water from above, letting it run through the open bark-based compost. This is usually done 1-2 times a week with a little orchid fertiliser every 2-3 waterings.

Avoid standing your orchids anywhere too hot and dry in the home. Directly above a radiator or television can provide a lot of dry heat, which simply dehydrates the plants more quickly. A bathroom or kitchen can often be the best places as these naturally are a little more humid.

Many houses now have conservatories attached to them and these can make ideal orchid growing areas. Shade, ventilation and humidity for summer and insulation and heating for winter are necessary though, so a few adjustments are usually required to make the conservatory “orchid friendly”. If these changes are not made then a conservatory can be quite desert-like with hot, bright and dry summers and cold winters, far from ideal for orchids.

Clean your orchids as well as your furniture! Household dust will collect on their leaves so wipe them regularly to keep them healthy and looking good.

By Sara Rittershausen, Burnham Nurseries www.orchids.uk.com

Masdevallia Culture

Light During the winter months, end of October until March, I do not use any shading on my greenhouses. I use the 50% aluminium shade cloth which is fixed to a central ridge bar about 12 inches from the glass, this allows me to pull the shading up or down as required; i.e. down when the sun is out and up when it's cloudy, it only takes a few minutes.

Temperature I aim for a minimum night temperature of 10°C and daytime 15°C. This is not always possible in the summer months and I do the best I can using extractor fans and aluminium shade cloth.

Water I only use reverse osmosis water because I live close to two power stations and my rainwater is very acidic. I water the larger pots about every two weeks depending on the weather, and the smaller pots are watered every week, again depending on the weather. I do not grow many plants on tree fern slabs; the ones I have get sprayed twice daily and soaked once a week. My plants are checked regularly and extra water is provided if needed.

Humidity I have an automatic system that sprays under the benches and is controlled by a sensor. I aim to keep the humidity at 80% but this is not possible during hot summer days when a 12 inch extractor fan is working; even then it usually stays above 50%. I also use net screens that fit the door frames, this allows me to leave the doors open day and night from April through to November, weather permitting. All pleurothadinae love fresh air.

Fertiliser I recently started to use Akerne's Rain Mix fertiliser at 300ppm from March until the end of May, increasing it to 600ppm in the longer summer days and then I drop down to zero feed from the end of October to the end of February. I also flush the pots with clean R.O. water about once a month.

Potting My potting mix at the moment is 60% New Zealand sphagnum moss, 20% sponge foam, and 20% sponge rock. I have stopped using my normal mix of 40% small bark, 20% foam sponge, 20% sponge rock, and 20% chopped sphagnum moss; although it worked for me, I am always trying to get a better growing medium. I am also experimenting with another couple of mixes will hopefully report back on their success in a later article.

Pests and diseases

I aim for early intervention when controlling pests and diseases and spend a lot of time checking each individual plant and quickly deal with any problem before they become serious. Being constantly vigilant keeps any damage to my orchids to an absolute minimum.



by Ellis Eyre

Oncidium Culture - Dancing Ladies Warm Section

There are several hundred recognised oncidium species, plus a large number of hybrids. The most common oncidiums grow well under normal indoor conditions as well as intermediate to warm greenhouse conditions. They have large pseudobulbs that arise from a mass of thin white roots. The large leaves (up to 2 ft.) emerge from the pseudobulbs. Most species generally flower in autumn although modern hybrids flower all year round.

Light: Oncidiums are much more forgiving of bright, even direct, light than other popular orchids, they can handle direct morning light and prefer bright to very bright conditions. The leaves should be bright green as opposed to dark green or reddish green. Reddish green indicates too much light and dark green too little light.

Water: During the growing season, water every few days, they should however be moderately dry between watering. Be careful, though, drainage is an absolute



priority, and the potting media must be perfectly free draining. Since oncidiums have large, fleshy pseudobulbs and masses of roots, they are very prone to rot. If you see a pseudobulb beginning to rot, cut it out with sterile secateurs and reduce the amount of water. In the winter, reduce watering to monthly or less. They can withstand considerable drought because of their large pseudobulbs. Wrinkled pseudobulbs generally indicate a lack of water.

Fertiliser: During the growing season, feed with a weak orchid fertiliser every 2nd or 3rd watering. Although there are many species and hybrids, in general, the larger the plant, the more heavily it will feed.

Temperature: Warm growing oncidiums can be found in many habitats, from semiarid subtropical lowlands to high mountain region cloud forests. Generally, the most popular oncidiums, which feature small yellow flowers, large pseudobulbs and strappy leaves, are intermediate to warm orchids with minimum temperatures ranging from 13°C, to 25°C.

Humidity: Oncidiums enjoy moist air, requiring a minimum of 40-50% humidity in the immediate vicinity of the plant. Humidity should be increased with higher temperatures. The ideal humidity is between 55 and 75%, with as much ventilation or air movement as possible without any cold drafts.

Flowering: Oncidiums are magnificent in flower. A large, well grown plant may send out six or seven branched sprays of yellow flowers. The effect is very much like a cloud of butterflies each flower resembling dancing ladies.

Potting: Oncidiums do not like root disturbance and should only be repotted when either the compost becomes broken down or the pot becomes too small for the new growth. They like to be slightly under potted in a very free draining bark based potting media. In general only repot when necessary but every two years is ideal when the new growth is 2-3 inches long.

Oncidium Culture -

(Syn. Odontoglossum) Cool Section

Oncidium Cambria type hybrids are widely available and relatively easy to grow. Species *Oncidium* are more challenging and suitable for enthusiasts only.

Light: *Oncidiums* (cool growing types) grow under filtered subdued light ; in the home they do best in a North or North-East



facing window. However, do not place them in the middle of the room as they need to be close to a certain amount of light to do well. In the greenhouse, they need shade from late March until the end of September. We do not recommend putting *Oncidiums* outside during summer due to the risk of wind and sun damage to the leaves.

Fertiliser: Most hybrids grow continuously all the year round and so feeding should match. From February until August, feed with high nitrogen (20:10:10), using it at half strength at every second watering. From September until February, feed with high potash (4:4:8), using it at half strength at every second watering. Occasionally a foliar feed can be used as a tonic.

Watering and Humidity : Water every 5-7 days, all the year round if they are being grown as house plants. In the greenhouse, water every 4-7 days from the end of February until September, depending on weather conditions. During October and November when not much heat is needed and light is reduced, they may go 10- 14 days between watering. From December until the end of February when heating is on, you will need to water every 7-10 days. The ideal humidity is between 60%-70%, but do not worry if this falls in summer while the ventilators are open. This can be remedied by floor damping in the early evening.

Temperature: Cool growing *Oncidium*, mainly from the high Andes need a minimum night temperature of 52°F (11°C). This should rise in the daytime by 10°F (6°C) during Autumn and Winter and by 20°F (11°C) during Spring and Summer. Temperatures a little outside these extremes can be tolerated; ventilation should be used from March to September. *Oncidiums* love fresh, airy conditions and it is a good idea to install a circulating fan, running all the time.

Flowering: Most *Oncidiums* flower once each year when mature, the blooms lasting six weeks or more. The main flowering time used to be late winter and spring, but modern breeding has given us plants in flower at any time of the year.

Potting: Repotting is best carried out from February to April or late August to early October. The timing depends on the young shoot being between 1 inch and 3 inches in height.

Cultivation - Hardy Orchids

(From the Heritage Orchids Website with permission by Maren Talbot)

Definitions: Hardy orchids are those that grow in the ground in temperate climates similar to our own. They are deciduous, i.e., lose their leaves prior to a period of dormancy and they are able to withstand frost provided their roots are not water logged. By this definition, Pleiones are not hardy orchids, as they require a minimum winter temperature of +2°C and therefore would not normally survive winters in the British Isles. British orchids have either **tubers** (like potatoes) or **rhizomes** (an underground, horizontal stem of a plant that often sends out roots and shoots from its nodes, like the Lily of the Valley).

Cultivation - in a Nutshell (quote from the Hardy Orchid Society Website)

| | |
|-------------------------------------|---------------------------------|
| use an open compost, | do not allow plants to dry out, |
| feed them with weak fertiliser, | shade them on hot summer days, |
| protect them from slugs and snails. | |

And a little more detail..

Prepare the ground, ensuring that the soil is not too heavy and does not dry out in the summer. On heavy soil, incorporate large quantities of compost, grit and other materials that promote drainage. Or you could grow them in a raised bed or in a large pot or tub where you can give them more personal attention. Plant them with 3 - 5 cm (1½ inches) of soil above the growing tip. Cover with a layer of mulch. In nature, they would be among grasses and wild flowers, which would protect from direct sunlight that may burn the young shoots, also from wind which would dry out the soil surface. It is therefore best to plant them facing east, west or even north, so that they don't get scorched by the midday sun. Inspect the soil regularly and water if it appears dry. Hardy orchids must never dry out at the roots or they will die. Most hardy orchids grow happily on any soil, but some require acid soils. If you live in an area with chalky soil, the acid lovers should be potted in large pots or tubs or in specially prepared beds containing ericaceous compost, mixed with horticultural grit, 1 part per volume soil to 1 part per volume grit. In the spring, protect from slugs and snails. As plants increase, you can divide them in late summer, if needed, taking care not to damage the new underground shoots which will be next year's leaves and flowers.

(www.HeritageOrchids.co.uk)



Phragmipedium Culture

These orchids come mostly from Ecuador and Peru live in a wide range of habitats. This means that they are subjected to varying light, temperatures and humidity and therefore these notes only provide a general guide to cultivation.



Watering: All of these plants like their “Feet Wet” and should be kept moist at all times. As a guide you should water every two or three days in summer and once a week in winter, with something in between for Spring and Autumn. Rain, or reverse osmosis water is preferred with a pH between 6.2 and 6.8 if possible. The only exception is *kovachii* which seems to like harder water at a pH of 7.0+. If you are brave you can stand the plants in trays of water during the summer, which is a death warrant to most other orchids.

Fertiliser: Like most orchids they do require feeding to get good growth, but generally you should not exceed 300ppm for species and hybrids. The exception to this is any plant of *longifolium* and its hybrids which will take 500ppm without burning the roots. A good balanced feed works well as too much nitrogen makes for soft growth in many of the species.

Temperatures: Success can be achieved in a wide range of temperatures, but most phragmipediums like a minimum night temperature of 13/15°C, with a daytime rise of 10°C if possible.

Humidity: A range of between 50% to 70% relative humidity should be maintained. More than this can cause significant problems with fungal disease in new growths and buds rotting away. Less than this can cause issues with bud drop and red spider mite.

Light: Moderate levels seem to work well for these plants. Around 1500 to 2500 foot candles provides strong growth; it is essential to look at your plants to check if the leaf colour is a mid green and move as necessary.

Repotting: Because of the frequency of watering they require regular repotting as the compost breaks down or becomes tainted with the build-up of salts. Annual inspection is recommended, repotting into a moisture retentive but free draining compost. Success is achieved with mixes based on bark or rockwool cubes and plastic pots to retain the moisture.

Paphiopedilum Culture Ian Dorman

Paphiopedilum species come from subtropical areas of South East Asia and are essentially humus epiphytes rather than terrestrials which has significant implications for their culture either in a greenhouse or in the home. They are a diverse genus of orchids with a widespread geographic range, from the mountains of the Himalayas to the steaming jungles of Borneo, so any cultural advice can only be given in general terms. It is important to obtain as much information as possible about habitat conditions of individual species. Understanding the recent parentage of some of the hybrids will be useful in ensuring optimum culture of these truly exotic plants.

Growing Media or Compost: Experienced growers experiment with a range of composts; for the novice a good quality bark based compost will give the best chance of success. A good quality mix is as follows: 60% good quality medium grade fir bark, 20% large perlite or sponge rock, 10% medium grade horticultural foam, 10% good quality sphagnum moss. Additionally crushed dolomite lime can be added at the rate of one teaspoon per litre of compost

Potting and Re-potting: If plants are purchased in pots then it is important to check the quality of the root system relative to the size of the pot. Gently ease the plant out of the pot, retaining as much of the compost as possible around the roots. Where the plant comes easily out of the pot with only a few roots being evident then it is likely that the plant has been over potted and it should be transferred to a smaller pot without delay and kept a little drier for a few weeks until evidence of new root growth becomes apparent. Paphiopedilums should never be overpotted and it is important to err on the side of caution when selecting the correct size of pot. Clear pots are now available which enables growers to monitor root development more easily. Re-potting should normally be required every 2 years but other cultural factors such as feeding regimes could affect the re-potting cycle.

Watering, Water Quality and Feeding: Preferably use rain water or Reverse Osmosis water (RO) with a pH approaching neutral for Paphiopedilums. Tap water should only be used where the dissolved salts are very low otherwise the plants will not thrive. It is important that a balanced fertilizer is used with the necessary trace elements for good healthy growth. There are many balanced fertilizers on the market for orchids, however those fertilizers with high levels of urea should be avoided as it is difficult for orchids to take up this type of nitrogen. Watering should normally take place early in the day and plants should always be kept moist and never be allowed to become dry at the roots. Paphiopedilums have no mechanisms for storing water other than plant tissue including roots. Frequency of watering will depend on cultural conditions; usually once a week for mature plants, however plants in smaller pots may need watering every other day.

Light levels/Shading: Paphiopedilums should never be subjected to direct sunlight but good quality indirect light is essential to achieve optimum growth and regular

flowering. If growing in a greenhouse 60% shade cloth should normally be applied in February and remain in place until late September depending on location and presence of large overhanging trees. In the home, plants can be placed in a north facing window all year round. Paphiopedilums can benefit from additional artificial lighting either to extend the day or provide better quality light during the darker months of the year. There are many different types of artificial lighting on the market. Grow Lux tubes with the correct spectrum for plant growth and flowering have become very popular in recent years.

Heating, Temperature Control & Ventilation: Paphiopedilums generally thrive within an average temperature range from a minimum of 14 °C in winter to 30°C in summer depending on where they come from in the wild. Consequently growers usually divide their plants into intermediate and warm sections to facilitate optimum growth. Temperatures are usually controlled by good quality electronic thermostats and efficient ventilation in summer. Plants can benefit from air movement and ventilation fans are useful in creating a gently breeze throughout the growing area.

Humidity: Humidity levels in the range of 70% are vital in order to grow good quality Paphiopedilums. This can be maintained by a variety of methods such as foggers or sprayers. For individual plants grown in the home gravel trays can be useful to provide local humidity, however care should be taken to avoid placing plants near to radiators.

Pests & Diseases: Fortunately there are few pests which are a problem for Paphiopedilums with the exception of mealy bug which can be difficult to eradicate if well-established within a large collection. In this case regular spraying with a systemic insecticide will be necessary; however preventing these pests entering the growing area in the first place is the preferred option. For individual plants several applications of methylated spirits applied by a tooth brush usually has the desired effect. Disease on Paphiopedilums is of much more concern as bacterial or fungal infections can quickly spread throughout a collection. Prompt attention to control the spread of the disease is important by removal of infected leaves and spraying of affected areas with a good quality fungicide. Cinnamon is extremely useful in treating localised areas of rot.

Flowering: Flowering will normally occur when a plant has at least 2 mature growths and has completed the latest growth. Flower spikes should be staked as soon as possible to avoid kinking so that the flowers are presented in the correct attitude. It is important not to tie the opening flower too early otherwise it may hang its head. When exhibiting plants it is important to ensure the foliage is clean and healthy with any detritus and decaying leaves removed.



Phalaenopsis culture

(from www.phalaenopsisandmore.co.uk)

Phalaenopsis (moth orchids) are found mostly in Asia, from India to the Philippines, and to the north of Australia. They are monopodial epiphytes (growing on trees), with thick, leathery leaves and showy flowers



produced on long inflorescences. Their ease of care makes them the ideal orchid for growing on a bright, shaded windowsill in your home.

Light: *Phalaenopsis* like to be grown in bright shade conditions, but their leaves will burn quickly if exposed to strong sunlight. Generally a bright north windowsill, or an east or west windowsill, with a short amount of either early morning or late afternoon sun will be the ideal spot for growing your moth orchid.

Temperature: Most *Phalaenopsis* species and hybrids are warm growers, and need temperatures between 22 – 28°C during the day, with a nightly drop in temperature to around 15–18°C, although they can tolerate temperatures outside this range for short periods of time without any problems. In winter, when growth rate slows down, a drop temperature difference of about 5°C between day and night will encourage your plants to initiate flowering.

Water and humidity: *Phalaenopsis* do not have pseudobulbs to store water, neither do they have a rest period. This means that they need to be watered consistently all year round. Water your plants thoroughly once a week during Spring and Summer, and reduce this to once every 10 to 14 days between Autumn and Summer. Ensure good humidity around your plants by standing them on a tray with pebbles filled with water, or by having foliage plants around them. Never allow water to sit in the crown of your plants, and do not let the roots sit in water. A dilute, balanced fertiliser applied every other watering is recommended for strong growth and flowering.

Potting: *Phalaenopsis* can be repotted at any time of the year, although it is best done in early Spring. Use a mixture of coarse bark with charcoal and perlite, although some species are better grown in pure *Sphagnum* moss. Do not overpot, and replace your potting medium every two or three years if using a bark-based medium, or every year if using *Sphagnum* moss.

Dendrobium Culture

The genus *Dendrobium* is one of the largest in the orchid family and includes more than 1000 species. Dendrobiums occur naturally from India to Japan, south to Australia and east to some of the Pacific islands. Their altitudinal range is from sea-level to more than 3000m. Plant size covers the full gamut from true miniatures to monsters more than 5m tall. With their mostly colourful and attractive flowers, dendrobiums have always been popular in cultivation and although commonly available plants tend to be hybrids, many fine species are also propagated and grown.



In general terms dendrobiums like plenty of light and air movement, and when actively growing, a lot of water. At one extreme are those plants such as *D. aphyllum* which are fully deciduous and thus kept mostly dry for part of the year and at the other are those like *D. cuthbertsonii* which come from high altitudes and must never be dry for more than a day or two. As a general rule, plants which bear leaves throughout the year will appreciate regular watering but much less frequently when growth slows down or stops during the winter months.

Small plants may be mounted or grown in free draining pots whereas larger ones whose natural habit is pendulous are better mounted or planted in hanging containers to allow better root development. Most other plants will form compact upright clumps which are most easily accommodated in pots.

Suitable temperatures will depend on the origins of particular plants. Those from tropical montane habitats or temperate regions of Australia will prefer a winter minimum of around 10 C but will tolerate less but with a rise during the day and a few degrees warmer during the growing season. Plants from monsoon climates will experience dry days for part of the year but night time humidity is high as are light levels during the day so some water is required even in winter just to avoid shrivelling.

Popular hybrids derived from *D. nobile*, a monsoon plant, need to grow strongly after spring flowering so that new growths are fully formed by the time winter comes with cooler and drier conditions. These will encourage the formation of the next flower buds which appear in clusters on stem nodes. Hybrids derived from *D. bigibbum* produce sprays of long lasting flat phalaenopsis-type blooms from the upper stem nodes but are truly tropical in their needs which means a winter minimum of 15°C with a day rise and 18°C minimum during growth.

For those who would like to know more, 'Dendrobium and its relatives' by Lavarack, Harris and Stocker and published by Timber Press in 2006 cannot be too highly recommended.

By David Menzies

Orchid Pests and Diseases

Pests and diseases cause serious damage to orchid plants and plants do not thrive.

Prevention Optimum culture: good greenhouse hygiene (sterile tools, pots, etc.), avoid overcrowding of plants, morning watering, dry nightfall, segregate new plants, vigilance, early detection and treatment, quarantine or dispose of infected plants.

Common pests

Scale insect is the most damaging pest of orchids. Boisduval scale from tropical America is the most serious and is widespread in collections. It can seriously debilitate or kill if not controlled quickly. The insects mainly attack cattleyas, phragmipediums, dendrobiums and oncidiums. Early detection is difficult as they hide under sheaths, leaves and pseudobulbs. The first indication is yellow patches on the leaf caused by the adult female feeding, with corresponding circular cream coloured scale on the underside of the leaf. Eggs are laid under the scale which protects from insecticides and predators. They hatch into nymphs/crawlers which are very mobile and vulnerable to sprays. The immature males form a cottony mass, often mistaken for mealy bugs, although quite different in appearance - white, narrow and elongate. Brown scale also attacks orchids but is easier to eradicate. The main problem is rapid reproduction, producing overlapping and multiple generations which makes control difficult. Control methods are most effective against crawlers for about two weeks.

Light infestation – remove visible scales with methylated spirit and cotton wool bud. Remove all sheaths to check for scale underneath.

Severe infestation – spray with a systemic insecticide at 7 - 14 day intervals, at least three times, to eliminate nymphs as they hatch. Repot and isolate.

Available insecticides are -

Bug Clear Ultra (Acetamiprid),

Provado Ultimate Bug Killer concentrate (Thiacloprid),

and Provado Ultimate Bug Killer aerosol (Imidacloprid and Methiocarb).

(Please note: The laws for insecticides are changing rapidly and some may be banned.)

Yellow patches from
Boisduval scale

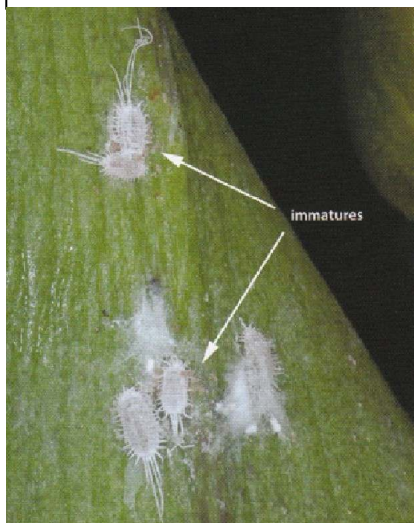


Boisduval scale developmental
stages: 1. crawlers,
2. mature females, 3. immature
males, 4. mature males

Red Spider Mite



Mealy Bug - adults and immatures



Despite regular scheduling of control methods eradication is often unsuccessful, and the only option is disposal of the plant.

Mealy bug

Is a serious pest resembling a small white woodlouse. It attacks all orchids, especially phalaenopsis and paphiopedilum. They penetrate the plant tissue and cause considerable cell damage. Signs of infestation are yellow patches on the leaf, sooty mould and brown patches caused by secondary bacterial or fungal infections. It has a white waxy protective coating and hides under leaves, sheaths, flowers and in compost.

Treatment: as for Boisduval scale but easier to eradicate.

Spider Mite

Very small sap sucking mite. Not visible to the naked eye, but can be seen with a magnifying glass. Causes mottled leaves and a silvery appearance underneath. Progresses to webs if severe, particularly affects cymbidiums and oncidiums.

False Spider Mite

Produces similar symptoms to the above. Affects especially phalaenopsis and paphiopedilums.

Treatment Increase humidity. Mites like hot, dry conditions. Wipe leaves with soapy solution, plant oils, Plant Vitality Plus or spray with Vitax Organic 2 in 1 Pest & Disease Control. If persistent, spray with a systemic insecticide containing Bifenthrin (Scott's Bug Clear gun). Biological control, Phytoseiulus, is variably effective.

Aphids

Not a serious pest except on masdevallias where they can spread virus. Treat with contact insecticide.

Thrips

Very small sap sucking insects that cause orange/brown marks on leaves. Treat with a systemic insecticide.

Diseases caused by Bacteria and Fungi.

Black rot (*Pythium ultimum* and *Phytophthora cactorum*).

Fungal rot affects all orchids especially cattleyas. Infected areas are black and watery.

Bacterial soft rot (*Erwinia carotovora*) affects most orchids. *Erwinia chrysanthemii* and *Pseudomonas cattleya* particularly affect phalaenopsis. Bacterial brown rot (*Erwinia cypripedii*) – affects phalaenopsis, paphiopedilums and phragmipediums.



Bacterial rot caused by *Erwinia carotovora* pv. *carotovora* and *Erwinia chrysanthemi* on a phalaenopsis.

These infections spread rapidly and if they reach the crown or stem can kill the plant. If treated early plants can be saved, so vigilance is essential. Rot appears brown/black, watery and may smell. Bacteria can become systemic and therefore incurable.

Prevention and Treatment

Good air movement, ensure leaves and growths are dry at night. Remove infected leaves, or the whole growth for basal rot.

Fungal infection – spray with fungicide

Bacterial Infection – treat with cinnamon or yellow sulphur. If unsure of the cause of infection use both treatments. Keep plant drier until the infection is under control. Repot if the infection is severe.

Slugs and snails

Treatment - Slug pellets or Slugit. Search for and remove after dark. Copper tape can be used around pots.

Virus

Common in collections. Cymbidium mosaic affects 1 in 5 plants and Odontoglossum ringspot 1 in 100. Appearances include brown/black mosaic pattern or chlorotic streaks on leaves. You cannot diagnose by appearance alone, there are many other causes for these symptoms. Plant appears to be in poor condition. Diagnosis is confirmed by an Enzyme-linked immunosorbent assay test (ELISA). Many orchids that carry virus, show no symptoms but can infect other plants. There is no effective treatment, discard or isolate. Virus is not spread by insects (except in masdevallias - infected by aphids). Virus is spread by infected cutting tools, pots etc. Sterilisation of all tools and good greenhouse practice and hygiene is essential. Avoid overcrowding; assume all plants could be infected.

By Hilary Hobbs

THE INTERNATIONAL ORCHID SHOW

Malvern

...the Show within a Show!

at

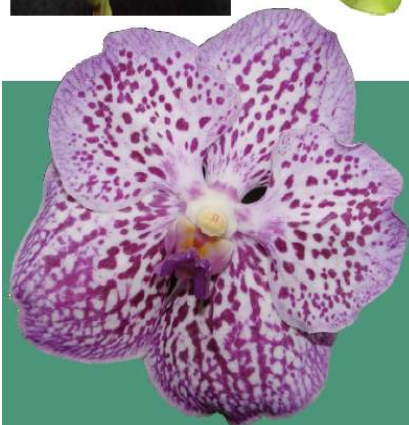


ROYAL THREE
COUNTIES SHOW

13-15 June 2014

A spectacular display of exquisite orchids from growers in Malaysia, Ecuador, Germany, Taiwan, Holland, Denmark & the UK.

Come and see the very latest hybrids and species in this captivating family, at Britain's premier food, farming & countryside event, and enjoy the Showground's beautiful location at the foot of the magnificent Malvern Hills.



Three Counties Showground
Malvern, Worcestershire WR13 6NW
threecounties.co.uk/threecounties
For more information/tickets:
malvern-ios.org
Telephone: 01642 654748



Assistance and participating dogs only

The Orchid Review



Volume 121 No 1592
June 2013

The Orchid Review



No 1219

All that's new in orchids from the world's oldest authority

The Orchid Review is essential reading if you have a passion for orchids. It is the oldest and most influential orchid magazine in the world and is published by the Royal Horticultural Society. Each of the four issues a year are packed with a range of fascinating, inspirational features:

- Profiles of orchid genera, species and hybrids
- Advice on a wide range of orchid problems
- Orchids in the wild, and conservation projects
- Techniques for growing and propagating orchids
- First descriptions of new orchids
- RHS awarded orchids with cultivation advice from the growers of the awarded plants
- World news, event finder, book reviews



Sharing the best in Gardening

The quarterly supplement to Sander's List of Orchid Hybrids, supplied by the RHS as International Cultivar Registration Authority, is available for a small fee

- **Four issues with** the Orchid Hybrid List, UK **£34** overseas airmail £44

- **Four issues without** the Orchid Hybrid List, UK **£29** overseas airmail £37

Subscribe online or call us on the number below.

Website: www.rhs.org.uk/orchidreview Tel: +44 (0)20 7821 3401 Email: membership@rhs.org.uk



黃龍山蘭花園

OOI LENG SUN ORCHIDS nursery & laboratory



Over 50 years & 3 generations of family tradition in Malaysia

Website: www.aaorchids.com

Email: enquiry@aaorchids.com

Our mission is to give orchid hobbyists an opportunity to grow beautiful orchid species and hybrids. Browse our website to see a selection.

In 2014, we hope to see you at the International Show, Malvern, UK and the Dresden International Orchid Show, Germany.

For a show schedule and pre-order dateline, please check our website at www.aaorchids.com for further details.

In Europe, you can now bid and buy on a limited variety of our plants on our Ebay UK Site. Plants are shipped from our associate's establishment in the UK to European Union residents only. Use the QR code or this link.

<http://myworld.ebay.co.uk/orchidplanter962>



Support your British Orchid Nurseries

(Inclusion in this list does not imply an endorsement by the BOC)

(BOGA) denotes a Member of the British Orchids Growers Association

<http://www.boga.org.uk>

Alphabet Orchids 9 Oak Farm Gardens, Headcorn, Kent TN27 9TZ.

Tel: 01622 891894 Email: alphabetorchids@hotmail.co.uk

Web: www.alphabetorchids.com

Boden Orchids Telford, Shropshire.

Tel: 01952 588635 Email: bodenorchids@hotmail.co.uk

Web: www.bodenorchids.co.uk

Burnham Nurseries (BOGA)

Forches Cross, Newton Abbot, Devon TQ12 6PZ.

Tel: 01626 352233 Web: www.orchids.uk.com

Bush Orchids

1, Willis Road, Kingswood, Bristol, South Gloucestershire BS15 4ST.

Tel: 0117 9768047 Email: info@bushorchids.co.uk

Web: www.bushorchids.co.uk

Butterfields Pleiones

Harvest Hill, Bourne End, Buckinghamshire SL8 5JJ.

Tel: 01628 525455

Chantelle Orchids

8 Hob Lane, Burton Green, Warwickshire CV8 1QB.

Tel: 02477 040337 or 07510309646

Email: chantelle.shih@chantelle-orchids.com

Web: www.chantelle-orchids.com

Dave Parkinson Plants

4, West Bank, Carlton, Goole, East Yorkshire DN14 9PZ

Tel/Fax : 01405 860693 Web: <http://www.daveparkinsonplants.co.uk/>

Easy Orchids

Ewe Bank Gate, Waggon Lane, Upton, Pontefract, West Yorkshire WF9 1JS

Tel: 01977 645891 Web: www.easyorchids.co.uk

Equatorial Plant Company (BOGA)

The Dovecote, Newgate, Barnard Castle DL12 8NW.

Tel: 01833 908127 Email: equatorialplants@teesdaleonline.co.uk

Web: www.equatorialplants.com

Gold Hill Pleiones

Russett Cottage, 11 Olivers Mead, Child Okeford, Dorset DT11 8HT.
Tel: 01258 861849 Email: rainer@kretz8.wanadoo.co.uk

Heritage Orchids

4 Hazel Close, Marlow, Buckinghamshire SL7 3PW.
Tel: 01628 486640 Email: mtalbot@talktalk.net
Web: www.heritageorchids.co.uk

A J Keeling & Sons (BOGA)

Grange Nurseries, North View Road, Westgate Hill
Bradford, West Yorkshire BD4 6NS
Tel: 01274 682120 Email: johnkeeling@tiscali.co.uk

Kool Orchids

Nottingham, England, UK. Tel: 07910 870288
Email: koolorchids@virginmedia.com Web: www.koolorchids.co.uk

Laneside Hardy Orchid Nursery (BOGA)

74 Croston Road, Garstang, Preston PR3 1HR. Tel: 01995 605537
Email: jcrhutch@aol.com Web: www.lanesidehardyorchids.com

Laurence Hobbs Orchids Ltd

Bailiffs Cottage Nursery, Hophurst Lane,
Crawley Down, West Sussex RH10 4LN. Tel: 01342 715142
Mobile: 07961 350053 Email: lhorchids@btinternet.com
Web: www.laurencehobbsorchids.co.uk

McBean's Orchids

Resting Oak Hill, Cooksbridge, Lewes, East Sussex BN8 4PR.
Tel: 01273 400228 Web: www.mcbeansorchids.co.uk

Malcolm Perry Orchids

298 Park Lane, Frampton Cotterell, South Gloucestershire BS36 2BL.
Tel: 01454 773055

Orchid Alchemy (BOGA)

5 Bourne Road, Corby Glen, Grantham NG22 4NR.
Tel: 07867 919935 Email: Andrew@orchidalchemy.co.uk
Web: www.orchidalchemy.com

Orchids by Post Ltd. Flowervision Nurseries, Spout Lane,

Stanwell Moor, Middlesex TW19 6BN
Tel: 020 3393 8504 Email: info@orchidpost.co.uk
Web: www.orchidpost.co.uk

Orchids by Peter White Middleton Cheney, Banbury OX17 2RF.
Tel: 01295 712159 Email: peter@orchidsbypeterwhite.co.uk
Web: www.orchidsbypeterwhite.co.uk

Orchids Direct Tel: 07982 245544 or 07771 620486
Email: sales@orchids-direct.co.uk Web: www.orchids-direct.co.uk

Orchid Meadow 14 Cullesden Road, Kenley, Surrey CR8 5LR
Email: Anthony.heys@sky.com Web: www.orchidmeadow.co.uk

Phalaenopsis And More

50 Fir Tree Gardens, Shirley, Croydon, CR0 8 JQ
Telephone: 07951 070 637 Email: info@phalaenopsisandmore.co.uk
Website: www.phalaenopsisandmore.co.uk

Phoenix Orchids (BOGA)

Pennine House, 50 Pinnar Lane, Southowram, West Yorkshire HX3 9QT.
Tel: 01422 362509

Ratcliffe Orchids Ltd. (BOGA)

Picot Lane, Owslebury, Winchester SO21 1LR. Tel: 01962 777372
Email: ratcliffeorchids@uwclub.net Web: www.ratcliffeorchids.co.uk

Ray Creek Orchids (BOGA)

7 Jacklin Lane, Luddington, Scunthorpe, North Lincolnshire DN17 4RB
Tel: 01724 798445 Email: raysinorchids@btinternet.com
Web: www.raycreekorchids.com

Royden Orchids (BOGA)

Perks Lane, Prestwood, Bucks, HP16 OJD Tel: 01494 863224
Email: royden.orchids@gmail.com

Springwood Pleiones

8 Tredgold Avenue, Bramhope, Leeds LS16 9BU Tel: 0113 2301158
Email: Ken@pleiones.com Web: www.pleiones.com

Orchid Sundries etc.

Growth Technology Ltd. Orchid Focus products
Great Western Way, Taunton, Somerset TA2 6BX
Email: gcsales@growthtechnology.com
Web: www.focus-on-plants.com/

Just in Glass (BOGA)

The Old Brew House, Houghton Lodge and Gardens,
North Houghton, Stockbridge, Hants SO20 6LQ.
Tel: 07910 245690 Email: andy@justinglass.co.uk

Orchid Supplies Nottingham, England, UK.

Tel: 07910 870288 Email: info@orchidsupplies.co.uk

Web: www.orchidsupplies.co.uk.

LBS Garden Warehouse (LBS Horticulture Ltd)

Standroyd Mill, Cottontree, Colne, Lancs BB8 7BW.

Tel: 01282 873370 Email: webadmin@lbs-group.co.uk

Web: www.lbsgardenwarehouse.co.uk

Orchid Accessories

61 Stanwell Lea, Middleton Cheney, Banbury. Oxon. OX17 2RF.

Telephone 01295 712159 - Fax 01295 710668

Web: www.orchidaccessories.co.uk

Melcourt Industries Limited (for Bark)

Web: www.melcourt.co.uk

Ratcliffe Orchids Ltd. (BOGA)

Picot Lane, Owslebury, Winchester SO21 1LR. Tel: 01962 777372

Email: ratcliffeorchids@uwclub.net Web: www.ratcliffeorchids.co.uk

Simply Control

5 Sawmill Yard, Blair Atholl, Perthshire, Scotland, PH18 5TL

Tel: +44 (0)1796 482 128 Fax: +44 (0)1796 482 111

email: enquiries@simplycontrol.com Web: www.simplycontrol.co.uk

Two Wests & Elliott

Garden and greenhouse supplies Web: www.twowests.co.uk



Address: Orchideeën Wubben

Tollakkerweg 162

3739 JT Hollandsche Rading

The Netherlands

Tel. +31(0)35 577 1222 **Fax:** +31(0)35 577 2103

Email: orchid.wubben@planet.nl

Website: www.orchidwubben.com

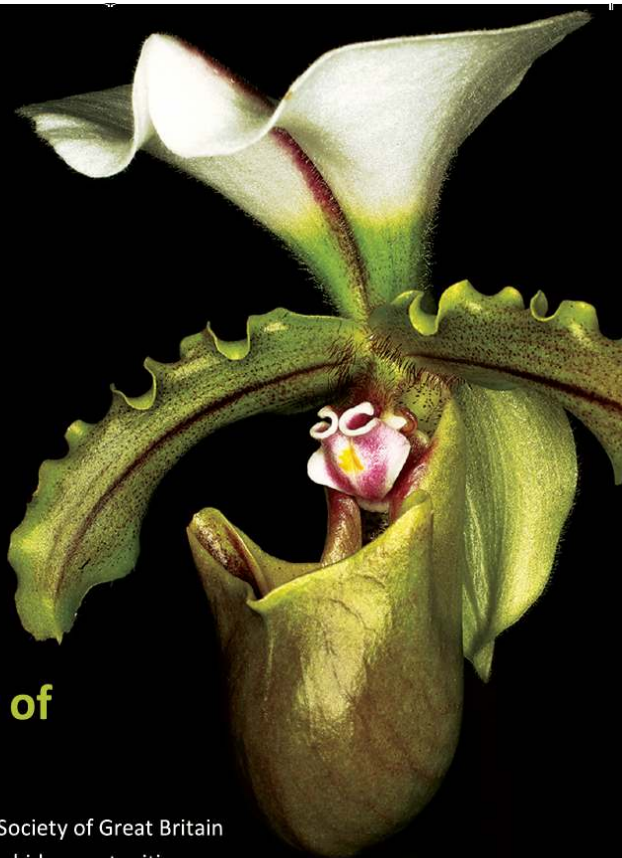
I hope to see you in 2014 at either Raby Castle Orchid Show in May or Malvern Orchid Show in June.

Pre-order and collect at these shows.



We have 1500 species available for mail order.

Postage and packing is a flat rate of £14. (Valid up to 2 kilo.)



Join the Orchid Society of Great Britain

Being a member of the Orchid Society of Great Britain opens the door to a world of orchid opportunities. Attend our friendly monthly meetings where you'll find orchids from around the world on display and for sale, lectures and cultural advice. Exhibit in local RHS and international shows or travel to see orchids in their natural habitat. Sit back and immerse yourself in our internationally acclaimed quarterly orchid magazine or a book from our comprehensive library. Meetings take place on the first Saturday afternoon of every month at Napier Hall, Hide Place, Westminster, London SW1P 4NJ.

For more information, visit our website
www.osgb.org.uk
or contact our Membership Secretary
osgbmembership@yahoo.co.uk



**Orchid Society of
Great Britain**
Founded 1951

Importing Plants into the UK from Europe

Many members holiday within the EU and see orchids for sale; both tropical and wild; it was suggested that it might be useful to have a layman's guide to the pitfalls of importing orchids into the UK. I will try to clarify the situation.

Within the EU bringing back orchids should not be a problem; there are no borders for trade within the EU. Sadly, there is always a danger that you might meet a customs officer who says - "I've been on a course and I know about orchids. I shall have to confiscate your plants!" This may happen because imports from countries outside of Europe work to a totally different set of rules.

Non-European Imports

1. Orchids need a CITES import permit for the UK which can be purchased from DEFRA (Animal Health) at a cost of £74 per genus. This involves a problem because your application to DEFRA needs to include a CITES export permit issued by the country of origin. This needs to be organised before you go on holiday and naturally before you know what you might be tempted to buy.

2. If that is not enough to put you off then next you need a phytosanitary document from the exporting country to show that the orchids have been treated to prevent bugs, viruses and diseases coming into the UK. This document needs to be faxed /emailed to DEFRA's phytosanitary department in York with details of when and where you will return about two days before you land. This will be checked and you will be charged about £40 for the service.

I would guess by now you will not want to bring in plants from outside of the EU. Does all this apply to flasks? CITES is still needed; seedlings are orchids. Phytosanitary for seedlings grown in sterile conditions can be a grey area.

Importing from the EU

As stated at the start this should not be a problem but customs officers may mistakenly choose to apply the above regulations to plants already legally imported into Europe. There is no simple answer if this happens, but there are a few steps that you take that might help when buying plants.

- a) Make sure that you have a receipt for your purchases.
- b) Ask for a copy of the CITES import permit if they are tropical orchids.
- c) Ask for a copy of the phytosanitary documentation.

Finally, having bought them in the EU, you have done nothing wrong so go through 'Nothing to Declare' and have your receipt etc. and argument ready in case you are stopped. **Good Luck!**

Chris Barker

PS Heathrow has a reputation of being the worst place for problems to occur.

BOC Photographic Competition 2012

1st Place

Goodyera repens

Photo by :- Nigel Johnson.

Orchid Society of Great Britain



2nd Place

Masdevallia Minaret,

Photo by :- Chris Barker,

Darlington Orchid Society



3rd Place

Thunia Gatttonensis,

Photo by :- Rita Wood,
Darlington Orchid Society



Diary of Events 2014

- ★ Please visit the BOC website for diary updates during 2014. ★
Including an indication of which trade will be at each show.

This will only work if societies and trade communicate the details!

<http://www.british-orchid-council.info>

Mar. 1st Wessex Orchid Society Annual Spring Show

11.30 am - 4.30 pm, Porchester Community School

Contact: Grahame Coleman 02380760509, lazybones36@hotmail.co.uk

Trade: Burnham, Ratcliffe, Laurence Hobbs

Mar. 1st Cheltenham & District Orchid Society Annual Show, 10.30 - 16.00

Churchdown Community Centre, Parton Rd, Churchdown, Gloucester, GL3 2JH

Contact: Jan Broadway 01452 616387 showsec@cheltenhamorchids.org

Trade: Burnham, Chantelle, Laneside, Writhlington School

Mar. 8th Suffolk Orchid Society Spring Show, 10am - 4pm

St Michaels Church Centre, The Drift, Martlesham, Nr Ipswich, IP5 3UY

Contact: Mrs Jenny Gage 01473 822569 roystongage@btinternet.com

Trade: Laurence Hobbs; Tom Hart Dyke + sundries for sale

Mar. 9th The Orchid Society of East Anglia Spring Show, 10am - 4.30pm

Eaton Parish Hall, Colman Rd, Norwich, NR4 7AW

Contact: Jack Butcher 01603 466535 joan324butcher@btinternet.com

Trade: Peter White, Orchid Alchemy

Mar. 9th BOGA Orchid Show, Ye Olde Belle Hotel, Barnby Moor,

Retford, DN22 8QS

Trade: Ray Creek, Orchid Alchemy, Burnham

Mar. 16th Darlington & District Orchid Society Darlington OS Annual Show

Sadberge Village Hall 11.00am - 4.00pm

Contact: Maurice Local 01642 566761 maurice.local@ntlworld.com

Trade: Ray Creek, Orchid Alchemy

Mar. 23rd Birmingham & Midland OS Spring Show, Birmingham Botanical

Gardens. Westbourne Rd, Edgbaston B15 3TR. 1100hrs - 1630hrs

Contact: Helen Millner 01384 379 729 hjmillner@tiscali.co.uk

Trade:

Mar. 29th Orchid Society of Great Britain OSGB Open Spring Show

The Glasshouse, RHS Wisley. 7:30 for exhibitors - 10:30 public

Contact: Francis Quesada-Pallares 020 8777 2904

Email: ols_francisjquesadapallares@hotmail.com

Trade: Burnham

Mar. 29th The Bristol & West of England Orchid Society Annual Show
Town Hall, Chipping Sodbury, South Gloucestershire 11.00 am - 4.00 pm
Contact: Brian Tomlinson 01454 883415 jt007f1810@blueyonder.co.uk

Trade: Burnham,

Mar. 29th Hinckley & District Orchid Society Midlands Largest Orchid Show
St Johns Church, 351 Coventry Rd, Hinckley, Leicestershire LE10 0NP
10.00am - 4.00pm

Contact: K A Bates 01455 446793 keithbates185@hotmail.com

Trade: Ray Creek, Laneside, Peter White, Chantelle, Orchid Supplies, Keith's Plant Book, plus 8 Orchid Societies

Mar. 30th South East Orchid Society Spring Show, Ashford Rail Staff Hall,
Beaver Road, Ashford, Kent, TN23 7RR 2pm - 4pm

Contact: Mrs. Karina Sellers 01233 720238 karinasellers@btinternet.com

Trade: Ratcliffe

Apr. 5th Solihull and District Orchid Society Spring Orchid Show
Arden School, Knowle, West Midlands, B93 0PT 11.00am - 16.00pm

Contact: Janet James 01564 822897 solihullorchids@blueyonder.co.uk

Trade: Peter White, Roy Barrow, Orchid Supplies,

Apr. 5th Thames Valley Orchid Society Spring Show
All Saints Hall, The Causeway, Marlow SL7 2AA 11.00am - 4.00pm

Contact: Barry Cook 0118 958 0448 barrycookdesign@talktalk.net

Trade: Ratcliffe, Heritage, Just-in-Glass

Apr 6th North East of England Show, Bowburn Community Centre,
Durham Road, DH6 5AT 11.00am - 4.00pm

Contact: Brian Coulson, 0191 4207329 brian.coulson@hotmail.com

Trade: Laurence Hobbs

Apr. 11th - 12th RHS London Orchid and Botanical Art Show
RHS Halls, Vincent Square, London Preview Evening: 10th April 6.30 - 8.30

Trade: Akerne, Burnham, Chantelle, Ecuagenera, Equatorial Plants, Heritage, Joseph Wu, K J Orchids, Laneside, Laurence Hobbs, McBean's, Nudlinger Orchideenladen, Orchideen Kopf, Orchis Floriculturing, Orquideas del Valle, Pazuzu Extreme Flora, Peruflora, Ratcliffe Orchids, Roellke Orchideenzucht, Rynne Orchidee, Vacherot & Lecoufle, Yih Cheng Orchids

Apr. 13th West Cornwall Orchid Society Spring Show 1100 hours - 1600 hours
Blaythorne, Holman Sports Club, Pendarves Road, Camborne TR14 7QG

Contact: Kit Lindsay 01209 717947 r.lindsay672@btinternet.com

Trade: In-house plant sales by society members

Apr. 26th Central Orchid Society Spring Show 11.00 am - 4.00 pm
Perton Civic Centre, Church Rd., Perton, Wolverhampton, WV6 7PD
Contact: John Spires 01902759640 johnspires@mac.com

Trade: Phoenix Orchids, Royden, Orchid supplies UK

May 3rd - 5th Darlington & District Orchid Society Raby Castle Orchid Show
Raby Castle, Staindrop, Darlington DL2 3AH 11.00am - 5.00pm
Contact: Maurice Local 01642 566761 maurice.local@ntlworld.com

Trade: Peter White, Ray Creek, Pazuzu, Dave Parkinson, Jac Wubben

May 4th Fenland Orchid Society Annual Show, Terrington,
St. Clement Village Hall, PE34 4LZ 10.00 am - 4.00 pm
Contact: David Morgan 01553 767032 morg611@aol.com

Trade:

May 11th Sheffield & District Orchid Society Annual Orchid Show
Chatsworth Cavendish Hall, Edensor, Derbyshire DE45 1PJ 10.00am - 4.00pm
Contact: James Charlesworth 01773745591 j.charlesworth261@btinternet.com

Trade: Burnham, Chantelle, Orchid Supplies, Dave Parkinson

May 11th Galashiels Orchid Show, Netherdale, Galashiels Rugby Club
11:00 am - 04:00 pm

Trade: Ray Creek, Laneside, Phoenix Orchids

May 17th The Devon Orchid Society 39th Annual Show 10.30am - 4.00pm
Mackarness Hall, High Street, Honiton, Devon EX14 1PG
Contact: Nicola Wakley 01404850354 nwakley@googlemail.com

Trade: Burnham, Laurence Hobbs

May 17th - 18th The Glasgow Orchid Fair. Glasgow Botanic Garden,
Great Western Road, Glasgow G12 0UE
Contact: 0141 276 1614 Website: <http://www.glasgowbotanicgardens.com>

Trade: Ray Creek, Burnham, Peter White

May 18th Cambridge Orchid Society Show 10.30am - 4.30pm
Harston Village Hall, High Street, Harston, Cambridge CB22 7PX.
Contact: Mrs Margaret Serdean 01763 848895 m.serdean616@btinternet.com

Trade: Heritage

June 8th North of England Orchid Society Annual Show
The Tenants Hall, Tatton Park, Knutsford Cheshire. 10.30am - 16.30pm
Contact: George Barnes 01942 810958 or via website form on
<http://orchid.org.uk/email.htm>

Trade: Burnham, Laneside, Ray Creek, Phoenix Orchids

June 13th - 15th Malvern International Orchid Show. 9.00am - 6.00pm
Royal Three Counties Show. One of the best country shows in the UK
Contact: Chris Barker 01642 654748 cjbandjb@ntlworld.com

Trade: Burnham, Laneside, Royden, Orchid Alchemy, Asendorfer Orchids,

Dave Parkinson, Ecuagenera, Ten Shin Gardens, Pazuzu Extreme Flora, Chantelle, Ray Creek, Ooi Leng Sun, K J Orchids, Lucke Orchideen, Orchid Supplies, M&M Orchids, Orchid Accessories, In-Charm, Just in Glass, Water Orchids, Wubben Orchids, Earthenware Jewellery, Keith's Plant Books, Simply Control

July 12th - 13th Harrogate Orchid Society Orchid Exhibition Weekend in the Bramall Learning Centre, RHS Gardens Harlow Carr Harrogate HG3 1QB
10.00am - 4.00pm Contact: Malcolm White 01535 661616
wmalcolmwhite@gmail.com

Aug. 17th Scottish Orchid Soc. Florence Woolward Paintings and Orchid Show. Marquis of Lothians Residence, Monteviot House, near Jedburgh. TD8 6UQ.
11:00 am - 04:00 pm Contact for more info: The Administrator 01835 830380
Trade: Ray Creek, Roy Barrow

Aug 23rd—24th BOGA Summer Orchid Fair, Roots Garden Centre, Priors Court Road, Hermitage, Thatcham, Berks, RG18 9TG
9am Saturday 10pm Sunday - 5pm Saturday 4pm Sunday
Contact: Jeff Hutchings 01995 605537 jcrhutch@aol.com

Sept. 6th -7th Orchid Study Group Welsh Orchid Festival 10.00am - 6.00pm Sat. National Botanic Garden of Wales, Carmarthenshire 10.00am - 4.00pm Sun.
Contact: Lynne Harrendence 01558 668492 lynne.harrendence@resqnet.co.uk
Trade: Alphabet Orchids, Kingston Port Orchids, Orchid Alchemy, Phalaenopsis & More, Orchid Supplies, Ray Creek, Trey Sanders

Sept. 7th Durham City Orchid Show organised by Darlington OS, University Botanic Garden, OSGB and Durham University. Josephine Butler College, Durham City 10.00am - 4.00pm Contact: Chris Barker 01642 654748
cjbandjb@ntlworld.com
Trade: Laneside, Phoenix, Ray Creek, Equatorial Plants, Chantelle Orchids, Orchid Accessories

Sept. 20th Somerset, Wiltshire & Dorset Orchid Society Annual Show Gillingham Primary School, Gillingham, Dorset. 10.30 - 16.00
Contact: Geoff Hobson 01747 853475 m5eay.geoff@btinternet.com
Trade: Burnhams, Bush Orchids, Writhlington School

Sept. 21th Pleurothallid Alliance - UK Annual General Meeting 10.00 - 16.00 Wilnecote Parish Hall, Tamworth, B77 5AD
Contact: Mrs Mary Smallman 01529 421521
Trade: Royden Orchids

Sept. 27th Bournemouth Orchid Society Autumn Show
Allendale Centre, Hanham Road, Wimborne, Dorset BH21 1AS 12.00 - 16.30
Contact: Chris Broomfield 07712 479056 chrisbroomfield@ntlworld.com

Trade: Burnham, Ratcliffes

Sept. 28th East Midlands Annual Orchid Show, Village Hall,
Radcliffe-on-Trent, Nottinghamshire NG122FB. 10.00am to 4.00pm.
Contact Melvyn Stephen 01159198124.

Trade: Burnhams, L.Hobbs, P.White, Phoenix, Chantelle, Laneside, and
Orchid Alchemy

Oct. 4th Lincolnshire Orchid Group Autumn Show 10.00am - 4.00pm
Leasingham Village Hall, near Sleaford
Contact: Tony Taylor 01205 461028 info@log-on.org.uk

Trade: Laurence Hobbs

Oct. 11th Wessex Orchid Society Annual Autumn Show 11.00a.m. - 4.30p.m.
Porchester Community School, White Hart Lane PO16 9BD
Contact: Dr Grahame Coleman 02380760509 lazybones36@hotmail.co.uk

Trade: Burnham, Ratcliffe, Laurence Hobbs

Oct 12th The Orchid Society of East Anglia Autumn Show, 10am - 4.30pm
Eaton Parish Hall, Colman Rd, Norwich, NR4 7AW
Contact: Jack Butcher 01603 466535 joan324butcher@btinternet.com

Trade: Laurence Hobbs, Ray Creek

Oct 12th West Cornwall Orchid Society Autumn Show 1100 - 1600 hours
Contact: Kit Lindsay 01209 717947 r.lindsay672@btinternet.com

Trade: In-house plant sales by society members

Oct. 17th -19th Devon Orchid Society Orchid Weekend
Langstone Cliff Hotel, Dawlish Warren, Devon EX7 0NA
Contact: Sue Lane 0188432430 sue@laneroger1.orangehome.co.uk

Trade: Burnham, Asendorfer, Chantelle, Laurence Hobbs, Ratcliffe,
Writhlington School, Wubben Orchids

Oct. 26th South East Orchid Society Annual Show, Ashford Rail Staff Hall,
Beaver Road, Ashford, Kent, TN23 7RR 1pm - 4pm
Contact: Mrs. Karina Sellers 01233 720238 karinasellers@btinternet.com

Trade:

Oct. 26th Birmingham & Midland Orchid Society Autumn Show. Birmingham
Botanical Gardens. Westbourne Road, Edgbaston. 1100hrs - 1630hrs
Contact: Helen Millner 01384 379 729 hjmillner@tiscali.co.uk

Nov. 1st Orchid Society of Great Britain Open Autumn Show
Wraybury Village Hall, The Green, TW19 5NA
Contact: Francis Quesada-Pallares 020 8777 2904

ols_francisjquesadapallares@hotmail.com

Trade: Burnham, Peter White, Laneside

Nov. 22nd Central Orchid Society Autumn Show 11.00a.m. - 4.00p.m.
 Perton Civic Centre, Church Rd., Perton, Wolverhampton, WV6 7PD
 Contact: John Spires 01902759640 johnspires@mac.com

Trade:

Nov 29th BOGA Pre-Christmas Orchid Fair, Arden School, Station Road,
 Knowle, B93 0PT. 10.00am - 4.00pm.
 Contact: Jeff Hutchings 01995 605537 jcrhutch@aol.com

RHS Orchid Committee, Programme 2014
125th Anniversary of the RHS Orchid Committee
 Contact: jillotway@rhs.org.uk

| Date | Venue |
|---|--|
| Tues. January 14 th 11.00am | Jodrell Laboratory |
| Fri. February 21 st 11.00am | RHS Plant and Design Show Vincent Square |
| Tues. April 1 st 11.00am | RHS Great London Plant Fair Vincent Square |
| Friday April 11 th 1.30pm | London Orchid & Botanical Art Show |
| Mon. May 19 th Time tbc | Chelsea Flower Show |
| Sat. 14 th June 1.30pm | Malvern Royal Three Counties Show (13 th to 15 th June) |
| Sat. July 12 th 2.00pm | Harlow Carr with Harrogate & North of England OS |
| Tues. August 19 th 11.00am | Wisley |
| Sat. October 18 th 2.00pm | Devon Orchid Society Weekend at Dawlish Warren, Devon |
| Tues. October 21 st 11.00am | RHS London Shades of Autumn Show |
| Tues. November 11 th 11.00am | Chelsea Physic Garden, The Gallery room |

Dates for BOC Judging Symposiums 2014

Saturday 12th April London Orchid & Botanical Art Show
 Sunday 19th October Devon Orchid Weekend, Dawlish Warren, Devon

GALASHIELS SHOW

Sunday May 11th 2014 11:00 am till 4:00 pm



Galashiels Rugby Club, Netherdale, Galashiels, Scottish Borders.

**Displays by Orchid Societies / Traders:- Phoenix Orchids, Ray
Creek Orchids, Laneside Orchids and Simply Control.**

Florence Woolward Paintings and Orchid Show

Sunday August 17th 2014 11:00 am till 4:00 pm

Monteviot House, near Jedburgh, TD8 6UQ. Scottish Borders.

The Marquis of Lothian's Residence



**Display of orchids from Orchid Societies in Scotland and England.
General and specialist traders selling orchids. Some of the original
volumes, illustrated in watercolour by Florence Woolward, will be
on display. Reproductions will be on sale. Further information from
the administrator. Tel. 01835830380 www.monteviot.com**



Laarsebeekdreef 4
B-2900 Schoten
Belgium

Email: info@akerne-orchids.com

Belgium's Leading Botanical Orchid Nursery

Akerne Orchids is a family owned business which started in 1971. Over the years Akerne Orchids has acquired a solid international reputation, winning many medals and prizes for the quality of our orchids and displays.

We will be attending the RHS London Orchid Show, 11th - 12th April 2014, Preview Evening on the 10th April. Please visit our website to view the catalogue and place a pre-order.

Plants and fertiliser are shipped within the European Union by courier service.



**Our own specially developed Rain Mix®
fertiliser is the best on the Market!**



Visit our website at - www.akerne-orchids.com

Members of the British Orchid Council

Click on the website address to link to the society site.

Birmingham & Midlands Orchid Society

Mrs Pamela Grove
337 Lichfield Road, Four Oaks, Sutton Coldfield
West Midlands B74 4BZ

Tel: 0121 308 2414 **Email:** r.grove@virgin.net
Website: www.bmos.org.uk
Venue: Friends Meeting House, George Road, Edgbaston. Birmingham
On: Second Saturday in the month. 1500hrs *No meeting in August*

Bournemouth Orchid Society

Mr Ken Griffiths
Tally House, Hawthorn Road, South Bockhampton
Christchurch, Dorset BH23 7AD

Tel: 01425 672492 **Email:** kenr.griffiths@virgin.net
Website: www.erythos.com/BOS/
Venue: Bournemouth Natural Science Society, 39 Christchurch Road
On: Last Friday each month 1930hrs (Except Feb., July, Sept and Dec)

Bristol & West of England Orchid Society

Mr Brian Tomlinson
72 Kent Avenue, Yate, Bristol BS37 7RZ

Tel: 01454 883415 **Email:** jt007F1810@blueyonder.co.uk
Venue: The Good Shepherd Hall, Bishopston, Bristol
On: Second Saturday of each month at 14.30hrs

The British Orchid Growers Association

Mr Jeff Hutchings
74, Croston Road, Garstang, Preston PR3 1HR

Tel: 01995 605537 **Email:** jcrhutch@aol.com
Website: www.boga.org.uk

British Paphiopedilum Society

Mrs Linda Phillips
14, Bolton Crescent, South Ham, Basingstoke RG22 6AZ

Tel: 01256 474911 **Email:** andy@justinglass.co.uk
Website: www.paphiopedilum.org.uk

Cambridge Orchid Society

Mrs Susan Johnson
'Le Touquet', Station Road, Elsenham,
Bishop's Stortford, Herts. CM22 6LG

Tel: 01279 812704 **Email:** p.johnson63@btinternet.com
Website: www.cambridgeorchidsociety.org.uk
Venue: Great Shelford Memorial Hall, Wollards Lane,
Great Shelford, Cambridge CB22 5JZ
On: First Friday of each month at 19.30 hrs *(except January and August)*

Cardiff & Vale of Glamorgan Orchid Society

Mrs Jean Lewis

74 Pontypridd Road, Barry, The Vale of Glamorgan CF62 7LS

Tel: 01446 403970 **Email:** jeanmarian.lewis@ntlworld.com

Website: cardiffandthevaleorchidsociety.co.uk

Venue: Highlight Park Community Centre, Barry

On: First Saturday in the month at 2.30pm to 4.30pm

Central Orchid Society

Mrs Hazel Percival

19, Beverley Close, Penkridge, Staffordshire, ST19 5SS

Tel: 01785 715613 **Website:** sites.google.com/site/centralorchidsociety

Venue: The Wrottesley Room, Perton Library, Severn Drive

Perton, Wolverhampton, WV6 7QU

On: Last Saturday of the month at 2.00pm

Cheltenham & District Orchid Society

Mr Rod Wells

15. Lapwing Close, Northway, Tewkesbury, Glos. GL20 8TN

Tel: 01684 294485 **Email:** secretary@cheltenhamorchids.org

Website: www.cheltenhamorchids.org

Venue: St John's Church Hall, Churchdown GL32DA

On: 4th Tuesday of each month at 19.30hrs (except December)

Cheshire and North Wales Orchid Society

Mrs Tina Stagg

37, Deganwy Road, Deganwy Road, Conwy LL31 9DG

Tel: 01492 583219 **Email:** info@canwos.org.uk

Website: www.canwos.org.uk

Venue: St Mary's Church Hall, Handbridge, Chester

On: Last Friday of the month at 19.30 - 10.00pm (except Dec. and Aug.)

Chester Zoo

Mr Mark Sparrow

Chester Zoological Gardens, Upton-by-Chester, Cheshire CH2 1LH

Tel: 01244 650236 **Email:** m.sparrow@chesterzoo.org

Cumbria Orchid Society

Mrs Angela Rowlands

24 Annerley Road, Annan, Dumfriesshire, Annerley Road DG12 6HF

Tel: 01461202446 **Email:** angrowlands@hotmail.co.uk

Venue: Morton Community Centre, Wigton Road, Carlisle, Cumbria. CA2 6JP

On: 1st Wednesday of each month. 7.30pm to 10.00pm. except January

Darlington & District Orchid Society

Mr Maurice Local

10 Millais Grove, Billingham, Stockton-on-Tees, TS23 3WL

Tel: 01642566761 **Email:** Maurice.local@ntlworld.com

Venue: Sadberge Village Hall, Darlington **Website:** www.darlingtonos.org

On: 2nd Wednesday of the Month. 7.00pm

The Devon Orchid Society

Mrs Sue Lane

Willand Post Office, Willand Old Village, Cullompton, Devon EX15 2RJ

Tel: 01884 32430 **Email:** sue@lanerogers1.orangehome.co.uk

Web Site: www.devon.ukos.com

Venue: Burnham Nurseries, Forches Cross, Newton Abbott, Devon

On: 3rd Sunday of the month (with exceptions) 1.30 for 2.00pm until 4.00pm

The Orchid Society of East Anglia

Mrs Joan Butcher

48 Proctor Road, Norwich, Norfolk NR6 7PQ

Tel: 01603 466535 **Email :** joan324butcher@btinternet.com

Web Site: www.osea.org.uk

Venue: Eaton Parish Hall, Colman Rd, Norwich NR4 7AW

On: 3rd Friday each month at 19.30

East Midlands Orchid Society

Mrs Kim Pask

Gleakirk, Bathley Lane, Little Carlton, Newark, Notts NG23 6BY

Tel: 01636 701311 **Email:** kim.pask@btinternet.com

Web Site: www.eastmidlandsorchidsociety.org

Venue: Bottesford Village Hall, Bottesford, Nottinghamshire.

On: Third Sunday of the Month at 1430 to 1700 (except July & August)

Eric Young Orchid Foundation

Victoria Village, Trinity, Jersey JE3 5HH

Web Site: www.ericyoungorchidfoundation.co.uk

Tel: 01534 861963

Further Information: Please phone with reference to opening.

Fenland Orchid Society

Mr David Morgan

61 Elvington, Springwood Estate, Kings Lynn. Norfolk PE30 4TB

Tel: 01553 767032 **Web Site:** www.fenland-os.org.uk

Venue: Terrington Street, Clement Village Hall

On: First Wednesday of each month (Except January)

Glasgow Botanic Gardens

Mr Ewen Donaldson, General Manager

Glasgow Botanic Garden, 730 Great Western Road, Glasgow, G12 0UE

Tel: 0141 276 1614 **Email:** gbg@land.glasgow.gov.uk

Web Site: www.glasgow.gov.uk Open every day

The Hardy Orchid Society

Mrs M Tarrant

Bumbys, Fox Road, Mashbury, Chelmsford CM1 4TJ

Email: m.tarrant@virgin.net **Website:** www.hardyorchidsociety.org.uk

Further Information: Contact secretary for details of meetings.

Harrogate Orchid Society

Mr Malcolm White

6 Hospital Road, Riddlesden, Keighley, West Yorkshire BD20 5EP

Tel: 01535 661616 **Email:** wmalcolmwhite@gmail.com

Website: www.harrogateorchidsociety.co.uk

Venue: RHS Garden Harlow Carr Harrogate. See website for dates and times

Hinckley & District Orchid Society

Keith Bates

79 Hereford Close, Barwell, Leicestershire LE9 8HU

Tel: 01455 446793 **Email:** orchids1941@yahoo.com

Website: <http://hinckleydistrictorchidsociety.com>

Venue: Constitutional Club Chapel St., Barwell, Leicestershire

On: 1st Weds in the month except July & Aug. Start time 20.00 hrs

Lea Valley Orchid Society

Mrs Gillian Radley

3 Burleigh Road, Hertford, Hertfordshire SG13 7HA

Tel: 01992 550897 **Email:** gillian.radley@yahoo.co.uk

Website: www.wix.com/leavalleyos/lvos

Venue: Waterford Village Hall, Waterford, nr. Hertford,
A602 - Stevenage to Hertford.

On: Third Wednesday of each month at 7.30 pm.

Lincolnshire Orchid Group

Tony Taylor, 10 Stone Lane, Sutterton, Boston, Lincolnshire, PE20 2JZ

Tel: 01205 461028 **Email:** tony.tonytaylor@virgin.net

Website: log-on.org.uk **Venue:** Leasingham Village Hall Nr Sleaford

On: 1st Friday of every month except January 7.30pm

Mid Sussex Orchid Society

Dr Maria Firth

9 Harlands Close, Haywards Heath, West Sussex RH16 1PS

Tel: 01444 413626 **Email:** drmfirth@gmail.com

Venue: Town Hall, 40 Boltro Rd, Haywards Heath, West Sussex RH16 1BA

On: Second Sunday each month at 2.30pm

Mid Wales Orchid Society

Ms Fiona Miles

46 Westcroft, Leominster, Herefordshire, HR6 8HF

Tel: 01568 614489 **Email:** fiona.miles4@btinternet.com

Venue: Memorial Hall, Presteigne, Powys

On: Second Tuesday of each month at 19.30hrs

North Bucks Orchid Society

Mrs G Bramham, 25 Leon Avenue, Bletchley,

Milton Keynes, Bucks. MK2 2HL

Tel: 01908 373880

Venue: Rectory Cottages, Church Green Rd, Bletchle MK2 2HL

On: First Wednesday each month at 19.45hrs. No Meeting in August

North East of England Orchid Society

Pat McLean 3 Springfield Avenue, Eighton Banks, Gateshead NE9 7HL

Tel: 0191 4879515 **Email:** mcleanpatriciaaw@yahoo.co.uk

Website: www.ne-orchids.org.uk/

Venue: Bowburn Community Centre, Durham Road DH6 5AT

On: Last Tuesday of the Month, 19.00-21.30

North Hampshire Orchid Society

Mr Lawrence Gray 65 Pennine Way, Cove, Farnborough, Hants. GU14 9JH

Tel: 01252 512289 **Email:** lg1592@virginmedia.com

Website: www.north-hampshire-orchid-society.org.uk

Venue: East Oakley Village Hall, Hill Road, East Oakley, Basingstoke RG23 7JJ

On: Third Sunday at 1400 (with exceptions, see website for details)

The North of England Orchid Society

Mr George Barnes 64, Green Meadows, Westhoughton, Bolton BL5 2BN

Tel: 01942 810958 **Email:** orchidinfo@orchid.org.uk

Website: www.orchid.org.uk

Venue: Variable, monthly meetings usually on the Saturday of the 2nd weekend of the month. Staging completed by 11.00am show closes 15.00hr For variations consult website or contact us.

Orchid Society of Great Britain

Mrs Val Micklewright

103 North Road, Three Bridges, Crawley, West Sussex RH10 1SQ

Email: val@micklewright.com **Website:** www.osgb.org.uk

Venue: Napier Hall, Hide Place, Westminster, London SW1P 4NJ

On: On the first Saturday of each month, 13.30 - 16.30

Further Information: 13.45 -14.15 Introductory beginners session,
14.40 Guest Speaker

Orchid Society of Great Britain - Croydon Group

Mr Michael Penney 43 Meopham Road, Mitcham, Surrey CR4 1BH

Tel: 020 8648 7295 **Email:** michael@penneyorchid.fsnet.co.uk

Venue: Wallington Reformed Church, Stanley Park Rd, Wallington, Surrey, SM6 0EU

On: 1st Tuesday Monthly at 19.30 NO MEETINGS in January

Orchid Society of Great Britain - Essex Group

Moirá Tarrant Bumby's, Fox Road, Mashbury, Chelmsford, Essex CM1 4TJ

Tel: 01245 321437 **Email:** m.tarrant@virgin.net

Venue: Billericay South Green Memorial Hall, Southend Road, Billericay CM11 2PR

On: 2nd Saturday Monthly at 1.30pm to 4.00pm

Pleurothallid Alliance - UK

Mr D Smallman 10 Willoughby Close, Helpringham, Sleaford NG34 0RX

Tel: 01529 421521 **Email:** donaldsmallman234@btinternet.com

Venue: Wilnecote Parish Hall, Watling Street, Two Gates, Staffs B77 5AD

On: 21st Sept 10.00am - 4.00pm Secretary for meeting details.

Royal Botanic Gardens KEW

Christopher Ryan,

Tropical Nursery, RBG Kew, Richmond, Surrey, TW9 3AB

Tel: 020 8332 5563

Email: c.ryan@kew.org

Website: www.kew.org

Open all year, see website for opening times

Further Information: Email or phone for reserve collection visits

Royal Horticultural Society

RHS Orchid Committee

Horticultural Halls, Vincent Square, London

Contact: Jill Otway, Committee Secretary jillotway@rhs.org.uk

Tel: 01483 479717

On: See Diary of Events

Venue: RHS Orchid Committee meets at most RHS flower shows, the Chelsea Flower Show, selected society shows and BOC Congresses.

Scottish Orchid Society

Mr Alan F E Benson (General Secretary)

164 Eskhill, Penicuik, Mid-Lothian, Scotland EH26 8DQ

Tel: 01968-677075

Email: secretary@scottishorchid.info

Website: www.scottishorchid.info

Scottish Orchid Society EDINBURGH

Mrs Janet Halcrow

2 Carlingnose Court, Nth. Queensferry, Fife KY11 1EP

Tel: 01383 417262

Email: janet.halcrow@btinternet.com

Venue: Klondyke Garden Centre, Mortonhall, Edinburgh

On: Last Wednesday monthly at 19.30, NO MEETINGS in July or August

Scottish Orchid Society GLASGOW

Ms Lillian Johnstone

28 Russell Drive, Bearsden, Glasgow G61 3BD

Tel: 0141 942 3025

Email: lillian@dallmanjohnstone.co.uk

Venue: Hopkirk building, Glasgow Botanic Gardens, Glasgow

On: 3rd Monday Monthly at 19.30 NO MEETINGS June, July, or August

Scottish Orchid Society PERTH

Mr Brian Brocklehurst

146 Balgillo Road, Broughty Ferry, Dundee DD5 3EB

Tel: 01382 778348

Email: brian.brocklehurst1@btinternet.com

Venue: Village Hall, Pitcairngreen, Nth Perth

On: 4th Wednesday Monthly at 19.30, NO MEETINGS June or July

Scottish Country Members

Mr Colin Avery

Dunjop Brae, Bridge of Dee, Castle Douglas DG7 2AE

Tel: 01556 680452

Email: colin.avery1999@btinternet.com

The Sheffield & District Orchid Society

Mrs Carolyn McQueen

3 Milton Court, Swinton, Rotherham, S64 8RE

Tel: 01709 587208 **Email:** carolyn.m.mcqueen@gmail.com

Website: www.sheffieldorchids.org

Venue: Ranmoor Parish Centre, Ranmoor Park Road, Sheffield S10 3GX

On: Usually Second Sunday of each month, 10.00am to 12.30pm

Solihull and District Orchid Society

Mrs Janet James

203 Station Road, Wythall, Birmingham B47 6ET

Tel: 01564 822897 **Email:** solihullorchids@blueyonder.co.uk

Website: www.solihullorchidsociety.org

Venue: St George and Teresa Parish Centre, Knowle

On: First Saturday of the Month 1.00pm. No meeting in August

Somerset, Wiltshire & Dorset Orchid Society

Mr Geoff Hobson

30 Leigh Road, Westbury, BA13 3QL

Tel: 01373823820 **Email:** m5eay.geoff@btinternet.com

Website: swdos.webeden.co.uk

Venue: Pen Selwood Village Hall, Wincanton, Somerset

On: 1st Sunday of each month at 14.30hrs.

Visitors welcome £2 charge

South East Orchid Society

Mrs Karina Sellers

Wildwood, Knoll Hill, Aldington, Kent TN25 7BZ

Tel: 01233 720238 **Email:** karinasellers@btinternet.com

Website: www.seos.care4free.net/

Venue: Ashford Rail Staff Hall, Beaver Road, Ashford, Kent. TN23 7RR

On: Generally the last Sunday in the month at 2:00pm. Go to the Website for full information.

South Wales Orchid Study Group

Mrs Lynne Harrendence

Ael-y-bryn, Golden Grove, Llanarthey, Carmarthenshire SA32 8JR

Tel: 07967 016157 **Email:** lynne.harrendence@resqnet.co.uk

Website: www.orchidstudygroup.org.uk

Venue: National Botanic Garden of Wales

On: Saturday, once a month 11.00am to 1.00pm. Check website for details.

The South West Orchid Society

Mrs Marian Saunders

105 Wembdon Hill, Wembdon, Bridgwater, Somerset TA6 7QB

Tel: 01278 - 455170 **Email:** msaunders1@mail105.co.uk

Venue: West Monkton Village Hall, Monkton Heathfield, N, Taunton TA2 8N

On: 2nd Sunday of the month 2:30 to 5:00 pm

Southern Counties Orchid Society

Mr Peter Mottershead

33 Kingston Lane, Southwick, Brighton, East Sussex BN42 4SJ

Tel: 01273 597921 **Email:** pp.mottershead@ntlworld.com

Website: www.SouthernCountiesOrchidSociety.com

Venue: Lancing Leisure Centre, Brighton Road (A27) Lancing West Sussex

On: Second Wednesday each month at 19.30

Suffolk Orchid Society

Mrs Jenny Gage

Honeysuckle Cottage, Church Lane, Aldham, Suffolk IP7 6NP

Tel: 01473 822569 **Email:** roystongage@btinternet.com

Website: <http://suffolkorchid.co.uk>

Venue: St Michaels Church Centre, The Drift, Martlesham, Nr Ipswich, IP5 3UY

On: Last Wednesday of month (not Dec, July, or August) 7.30pm to 9.45pm

Sussex Orchid Group

Mrs Val Micklewright

103 North Road, Three Bridges, Crawley, West Sussex RH10 1SQ

Email: val@micklewright.com

Venue: Crawley Horticultural Hall, Ifield Ave., Crawley, RH11 7AJ

On: 3rd Sunday in the month at 2.30. (May and June meetings on 2nd Sunday)

Thames Valley Orchid Society

Mr Barry Cook

1 Fontwell Drive, Reading, Berkshire RG30 4QR

Tel: 0118 958 0448 **Email:** barrycookdesign@talktalk.net

Venue: St. Peters Church Hall, St. Peters Street, Marlow SL7 1NQ

On: Generally 3rd. Friday each month 8.00pm start.

Wessex Orchid Society

Dr Grahame Coleman

13 Glen Eyre Drive, Bassett, Southampton SO16 3NQ

Tel: 02380760509 **Email:** lazybones36@hotmail.co.uk

Website: wessexorchidsociety.org.uk

Venue: Shawford Village Hall, nr Winchester

On: Second Sat of month (except March & Aug), 2.00 p.m. for 2.30 p.m.

West Cornwall Orchid Society

Mrs Kit Lindsay

St Martins Villa, 13 Pendarves Road, Camborne, Cornwall TR14 7QB

Tel: 01209 717947 **Email:** r.lindsay672@btinternet.com

Website: www.westcornwallorchidsociety.btck.co.uk

Venue: Camborne Community Centre, Pendarves Rd, Camborne

On: 2nd Sunday of month at 2.00pm except August and December

Writhlington School Orchid Project

Mr Simon Pugh-Jones MBE

6 Park Hill Drive, Frome, Somerset BA11 2LE

Tel: 01373 466736

Email: spugh-jones@tiscali.co.uk

Website: www.wsbe.org.uk

York and District Orchid Society

Mr Peter Jones

19 Algarth Rise, Pocklington, York YO42 2HX

Tel: 01759 303691

Email: timothyjohnlewis@btinternet.com

Venue: Reading Rooms, Dunnington, York

On: Second Sunday each month 10am to 12.30pm



Masdevallia Mem. Barry Firby. Grand Champion Hybrid and Best Pleurothallidinae for grower Ellis Eyre (EMOS) at the BOC Congress, 2012 at Writhlington School. It also obtained an Award of Merit from the RHS Orchid Committee.

National Collections of Orchids

Plant Heritage (The National Council for the Conservation of Plants & Gardens)
recognise the following National Collections.

Anguloa Dr Henry Oakeley

77 Copers Cope Road, Beckenham. Kent BR3 1NR

Tel: 0208 658 0358 Fax: 0208 658 0359

Email: henry.oakeley@virgin.net

Catasetineae, Cyrtopodium Max Hopkinson

5 Golf Road, Radcliffe-on-Trent, Nottingham NG12 2GA

Tel: 0115 912 3095 Fax: 0115 933 3460

Email: maxhoppypcat@aol.com

Cattleya spp. & Guarianthe Mike Armstrong

Auld Reekie, 25 Church Lane, Muston, Notts NG13 0FD

Tel: 01949 842668

Email: mikandra@tiscali.co.uk

Dendrobium The Curator

Glasgow Botanic Garden, Glasgow G12 0UE Scotland

Tel: 0141 334 2422 Fax: 0141 339 6964

Email: gbg@land.glasgow.gov.uk

Gongora Drs Gary and Maria Firth

9 Harlands Close, Haywards Heath West Sussex RH16 1PS .

Open by appointment garyfirth@uwclub.net No of spp: 31

Maxillaria spp. Dr M McIlmurray

Pooh's Corner, 84 Redehall Road, Smallfield, Surrey RH6 9RS

Tel: 01342 842934 Email: michael.mcillmurray@btinternet.com

Phragmipedium spp. including Mexipedium Arthur L Deakin

Pomarium Cottage, Back Lane, Halam, Nottingham NG22 8AG

Tel: 01636 819974

Email: arthurlomasdeakin@yahoo.co.uk

Pleione Ian Butterfield Butterfields Nursery, Harvest Hill,
Bourne End, Buckinghamshire SL8 5JJ Tel: 01628 525455

Pleurothallidinae spp. Steve & Frances Manning
New Estover, 4 The Cedars, Nantwich, Cheshire CW5 5GZ
Tel: 01270 618400

Email: orchidsmann@uwclub.net

Note: Part of this Collection is held at Chester Zoo.

Contact: M Sparrow Tel: 01244 650236 Fax: 01244 371273

Stanhopea R J Hartley, Foxdale, Mill Lane, Wetley Rocks,
Stoke-on-Trent, Staffordshire ST9 0BN
Tel: 01782 550313 Fax: 01782 550 845
Email: orchidhartley@bigfoot.com
Web Site: www.geocities.com/foxdaleorchidsuk/

Further details are available from -
NCCPG, 12, Home Farm, Loseley Park, Guilford, Surrey GU3 1HS.
Tel: 01483 447540 Website: www.nccpg.com
Email: info@nccpg.org.uk



***Chantelle Orchids (UK) &
Hsiang Yu Orchids (Taiwan)***

8 Hob Lane, Burton Green, Warwickshire CV8 1QB

02477040337, 07510309646

chantelle.shih@chantelle-orchids.com

www.chantelle-orchids.com

We provide a wide range of species, hybrids and miniatures
including cattleyas, encyclias, neofinetias, dendrobiums,
brassavolas, angraecums, sophronitis, epidendrums, etc.

Please visit our website for a list of available plants and shows
that we will be attending.

We also take mail orders.

NOW LIVE

Our **NEW**
online
shop!

THE UK'S LEADING
MANUFACTURER OF
**GREENHOUSE HEATERS,
THERMOSTATS & GROWLIGHTS**



Simply Control

Est 1982

FREE explanatory catalogue
for professional and amateur
growers alike.

Includes: ● Automated Watering Systems
● Hydrofoggers ● Shading ● Propagation
● Ventilation etc

CALL NOW! **01796 482 128** (24 HOURS)
OR FAX 01796 482111

PLEASE QUOTE 187SC WHEN PHONING

OR SHOP ONLINE @

www.simplycontrol.co.uk

5, Sawmill Yard, Blair Atholl, PH18 5TL





The British Orchid Growers Association

— B · O · G · A —

Members

A J Keeling & Sons

01274 682120 johnkeeling@tiscali.co.uk

Burnham Nurseries Ltd & Orchid Paradise

01626 352233 mail@orchids.uk.com www.orchids.uk.com

Equatorial Plants Company

01833 908127 equatorialplants@teesdaleonline.co.uk www.equatorialplants.com

Just in Glass

07910 245690 andy@justinglass.co.uk

Laneside Hardy Orchid Nursery

01995 605537 jcrhutch@aol.com www.lanesidehardyorchids.com

Orchid Alchemy

07864 919935 andrew@orchidalchemy.co.uk www.OrchidAlchemy.com

Phoenix Orchids

01422 362509

Ratcliffe Orchids

01962 777372 ratcliffeorchids@uwclub.net www.ratcliffeorchids.co.uk

Ray Creek Orchids

01724 798445 raysinorchids@btinternet.com www.raycreekorchids.com

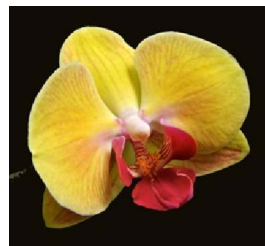
Royden Orchids

01494 863224 royden.orchids@gmail.com

Buy quality plants and receive knowledgeable advice



**Visit: www.boga.org.uk for
full member details and our
yearly programme of events or
visit our facebook page.**



Ray Creek (Orchids)



Always lots of quality orchids in stock: -Young Plants
- Flowering sized - species - hybrids - Gift Orchids

Try my Chopped Coconut Husk Growing Medium.

It's getting very popular

Happy to attend shows or present talks in most areas

Ray Creek (Orchids) 7 Jacklin Lane, Luddington, Scunthorpe,
DN17 4RB 01724 798445 email raysinorchids@btinternet.com
website raycreekorchids.com See me on facebook

Congratulations to B.O.C on this new venture. Good Luck!

Orchid Supplies UK

Meeting Orchid Growers Needs

www.orchidsupplies.co.uk

Come to Orchid Supplies UK for all your
Orchid growing products and a friendly
personal service when you need it.

- ◆ Highest quality orchid products
- ◆ NEW Online shop
- ◆ Quick Communication
- ◆ Safe & Fast delivery
- ◆ Akerne's Rain Mix
- ◆ No order too small
- ◆ 5% discount with coupon code 0505
- ◆ Email: info@orchidsupplies.co.uk
- ◆ Tel: 01159550324 or 07910870288

TATTON PARK ORCHID SHOW



Knutsford, Cheshire

8th June 2014

LARGEST ORCHID EVENT IN THE NORTH WEST

Many British Orchid Growers
Association traders and others
to buy from.

Stunning Society Displays

Set in the historic Tennants Hall of a
Stately Mansion House with children's
play area, restaurant, formal gardens
and deer park.

The North of England Orchid Society
invite you to a great day out for all.

Car parking and other charges may apply.

<http://orchid.org.uk/tatton>

In-Charm Orchid Laboratory

Owner Yuan-Chuan Hsiao is a leading
Paphiopedilum grower and hybridiser from Taiwan

Address:

No.61 Yashow 5th Rd., Showshan, Daya,
Taichung,
Taiwan 428, R.O.C.

Mobile: +886 932 977378

Fax: +886-4-25654988

Email: incharm@ms6.hinet.net



Paphiopedilum
In-Charm Maid 'Daya'



Web: www.incharmorchids.com

We hope to see you at the following show -

International Orchid Show Malvern

13th - 15th June 2014

We will be pleased to receive pre-orders for this show.

Paphiopedilum fanaticum 'In-Charm'

HINCKLEY & DISTRICT ORCHID SOCIETY SPRING SHOW

SATURDAY 29th MARCH 2014

Show Opens 10.00am to 4.00pm

**ST JOHN'S CHURCH
351, COVENTRY ROAD
HINCKLEY**

LEICESTERSHIRE LE10 0NF

6 Guest Societies

5 Guest Trade

**Admission £2. Children free
Free Parking. Refreshments**

The 4th Durham Orchid Show

Sunday 7th September 2014 10.00am - 4.00pm

Josephine Butler College, Durham City DH1 3DF

Stunning displays by Orchid Societies and sales from leading orchid nurseries.

The North East's biggest Orchid Show

There is ample free parking near to the College

Make a day of it and visit the Botanic Garden, the Oriental Museum, the Cathedral, the Castle, etc.



Admission to the Show is Free!

For more information contact: Chris Barker - cjbandjb@ntlworld.com



BURNHAM NURSERIES

Chelsea Gold-Medallists with the widest range of orchids in the UK! See 100s of beautiful, rare & exotic orchids in flower all year round.

- Many unusual species and popular hybrids for sale from seedlings to specimens & sundries too!
- Mail order a speciality.
- Free email newsletter.
- Orchid Masterclass courses.
- Visit our 'Orchid Paradise' Open 7 days a week.
- Coffee Shop with tasty refreshments and gifts.
- Loads of information online at orchids.uk.com.



We attend around 30 shows each year, all over the UK, check our website for the full list.

GET 10% OFF ONLINE ORDERS*! USE THE CODE BOC2014 IN OUR ONLINE SHOP DURING 2014

Forches Cross, Newton Abbot, Devon, TQ12 6PZ

Tel: 01626 352233 www.orchids.uk.com

Follow us @burnhamorchids



*Discount off shopping bag total, not inc. delivery. Only available on line.



Devon Orchid Society



Orchid Society Weekend 2014

*Dedicated to the memory of
Wilma Rittershausen*



Setting up and Preview: Friday 17th October
Show Open to the Public:
Saturday 18th and Sunday 19th October

Langstone Cliff Hotel
Dawlish Warren EX7 0NA

BOC Judging Symposium
RHS Orchid Committee Judging

Contact Sue Lane: 01884 32430
or email: sue@laneroger1.orangehome.co.uk

Devon Orchid Society website: www.devon.ukos.com

Orchid Accessories



The place to find your orchid accessories.

- ◆ Orchid bark
- ◆ Orchid feed
- ◆ Pesticides & insecticides
- ◆ Plant labels
- ◆ Baskets, pots
- ◆ Potting materials
- ◆ Sprays & misters
- ◆ Lighting systems

All you need to grow your orchids successfully!

We are the UK distributors for
**Besgrow Europe's Orchidata Bark
& New Zealand Sphagnum Moss.**

Why use Orchidata?

- ◆ Free from contaminants, pests and pathogens
- ◆ Reduced risk of plant disease and mortality.
- ◆ Remains healthy for up to 10 years without repotting.
- ◆ pH adjusted with added dolomite.
- ◆ Contains beneficial micro-nutrients & micro-organisms
- ◆ Use straight from the bag.

◆ As used by -

Writhlington School & the Eric Young Orchid Foundation



Contact: Peter White Tel: 01295 712159

Email: sales@orchidaccessories.co.uk www.orchidaccessories.co.uk

JOHANNESBURG, SOUTH AFRICA. 10 - 14 SEPTEMBER 2014

Experience *Magical* South Africa

at the 21st World Orchid
Conference and Show

Conference tickets, hotel options, evening
entertainment and a variety of tours are available
on www.woc21.org or follow us on Facebook
to keep up to date with latest developments.

Early Bird Registration ends 31 December 2013.



WOC 21
Johannesburg 2014
21st World Orchid Conference

www.woc21.org
[www.twitter.com/woc21](https://twitter.com/woc21)
www.facebook.com/21WOC



Aerangis

Exquisite African Orchids to discover, identify and grow

ISOBYL LA CROIX



TIMBER PRESS IS DELIGHTED to announce the publication of this long awaited book in which botanist Isobyl La Croix shares her knowledge of this exotic and elegant African orchid. Following years of study in the field she offers expert advice on the identification, cultivation and conservation of this important genus.



Packed with information and stunning full colour photographs, this book will be a treasured addition to your reference library.



Aerangis is published in September 2014 to coincide with the World Orchid Congress in South Africa.



For details of our special pre-publication offer, visit our website at www.aerangisbook.com or email us at aerangis@timberpress.com quoting code BOC2014

RHS LONDON ORCHID AND BOTANICAL ART SHOW

11 – 12 April 2014

10am – 5pm

Exclusive Preview Evening

10 April, 6.30 – 8.30pm



Oncidopsis La Marquanderie
'Le Don Le Maistre' AM-RHS

Book now rhs.org.uk/londonshows



Sharing the best in Gardening

RHS Horticultural Halls

RHS members £5, non-members £8.

Preview Evening £12

Follow us on  

RHS Registered Charity No: 222879/SC038262