



Orchidweb.com

Unique species + hybrids of many genera



We ship to countries within the EU twice per year.

Contact us for details

Orchidweb.com

email: orchids@orchidweb.com

The British Orchid Council Year Book 2015



A Guide for Orchid Enthusiasts

50p or more

Donation Please

50p or more

The British Orchid Council

The British Orchid Council brings together amateurs, commercial growers and the scientific community in a single forum. Membership currently comprises the fifty or so British Orchid Societies, the British Orchid Growers' Association, National Botanic Gardens maintaining significant orchid collections at Kew and Glasgow, the Eric Young Orchid Foundation in Jersey and the Royal Horticultural Society, with its major collection at Wisley.

The Council is a registered charity, the main objectives of which may be summarised as promoting and broadening the knowledge of orchids and encouraging excellence in their culture. It organises British Orchid Congresses in different parts of the country, organises lecture tours by leading specialists, maintains a training programme for internationally recognised show judges, produces this annual booklet, represents its members on both European and International bodies and has a strong commitment to conservation.

President

Mr Max Hopkinson

5 Golf Road, Radcliffe on Trent, Nottingham NG12 2GA

Tel: 0115 9123095 Email: maxhopycat@aol.com

Chairman

Mr Chris Barker

17 Surbiton Road

Stockton-on-Tees TS18 5PZ

Tel: 01642 654748

Email: cjbandjb@ntlworld.com

Hon. Secretary

Mrs Pat McLean

3 Springfield Avenue,

Eighton Banks,

Gateshead NE9 7HL

Tel: 0191 4879515

Email: mcleanpatriciaaw@yahoo.co.uk

Vice Chairman

Lady Samantha Hurley

17 Veronica Road

London SW17 8QL

Tel: 020 8673 7751

Email: sam@ballyhurley.com

Hon. Treasurer

Mr Arthur Deakin

Pomarium Cottage

Back Lane, Halam

Notts NG22 8AG

Tel: 01636 819974

Email: arthurlomasdeakin@yahoo.co.uk

Minutes Secretary

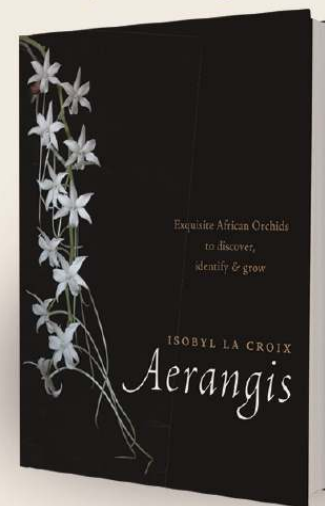
Mr Rod Wells

15 Lapwing Close, Northway, Tewkesbury, Glos. GL20 8TN

Tel: 01684 294485 Email: boc@cheltenhamorchids.org

Aerangis

Exquisite African
Orchids to discover, identify and grow
Isobyl la Croix



Timber Press is delighted to announce that this important book on *Aerangis* by African orchid expert Isobyl la Croix is now available.

Published in a limited edition and exclusively available from Timber Press until March 2015, we are sure that this will be a treasured addition to your reference library.

To find out more and to order your copy, please visit www.aerangisbook.com or email us at aerangis@timberpress.com

Orchid Accessories



The place to find your orchid accessories.

- ♦ Orchid bark
- ♦ Orchid feed
- ♦ Pesticides & insecticides
- ♦ Plant labels
- ♦ Baskets, pots
- ♦ Potting materials
- ♦ Sprays & misters
- ♦ Lighting systems

All you need to grow your orchids successfully!

We are the UK distributors for Besgrow Europe's Orchidata Bark & New Zealand Sphagnum Moss.



We are also distributors of DYNA-GRO orchid nutrients.

- Why use Orchidata?**
- ♦ Free from contaminants, pests and pathogens
 - ♦ Reduced risk of plant disease and mortality.
 - ♦ Remains healthy for up to 10 years without repotting.
 - ♦ pH adjusted with added dolomite.
 - ♦ Contains beneficial micro-nutrients & micro-organisms
 - ♦ Use straight from the bag.

♦ **As used by -**
Writhlington School & the Eric Young Orchid Foundation

Contact: Peter White Tel: 01295 712159
Email: sales@orchidaccessories.co.uk www.orchidaccessories.co.uk

Contents

- 2 BOC Information
- 4 European Orchid Conference and Show
- 6 Culture Sheets
- 16 British Orchid Nurseries
- 21 BOC Photographic Competition 2013/4
- 22 Diary of Events
- 26 RHS Orchid Committee Programme and Dates for BOC Judging Symposiums
- 28 Members of the BOC
- 35 Orchid National Collections

Front cover: *Catasetum pileatum*

Catasetums are the speciality of our President, Max Hopkinson; he has the National Collection of *Catasetineae*



There is a digital version of this Yearbook online.
Contact Details & Diary of Events will be updated during the year.
Look for the links during 2015 on the BOC Database at -
<http://www.british-orchid-council.info>

Editor: Chris Barker. Email: cjbandjb@ntlworld.com



EUROPEAN ORCHID CONFERENCE & SHOW

LONDON 9-12 APRIL 2015

PREVIEW EVENING 8 APRIL

Hosted by



Sharing the best in Gardening

eoclondon2015.org.uk



RHS Registered Charity No: 222879/SC038262



RABY CASTLE

One of England's Finest Medieval Castles

15TH ANNUAL ORCHID SHOW

Sunday 3rd & Monday 4th May 2015, 11am - 5pm

Fabulous Orchid Society Displays • Lectures & Demonstrations
Orchid Growing Advice • Plants for Sale



Raby Castle, Staindrop, Darlington, County Durham DL2 3AH
Tel: 01833 660202 Email: admin@rabycastle.com www.rabycastle.com



HINCKLEY & DISTRICT ORCHID SOCIETY SPRING SHOW

SATURDAY 28th MARCH 2015

SHOW OPENS 10.00am TO 4.00pm

ST JOHNS CHURCH,

**351 COVENTRY ROAD, HINCKLEY,
LEICESTERSHIRE LE10 0NP**

8 GUEST SOCIETIES & 5 GUEST TRADE

ADMISSION £2.00 CHILDREN FREE

PARKING, REFRESHMENTS

The 5th Durham Orchid Show
Sunday 6th September 2015 10.00am - 4.00pm
Josephine Butler College, Durham City DH1 3DF
Stunning displays by Orchid Societies and sales from
leading orchid nurseries.
The North East's biggest Orchid Show
There is ample free parking near to the College

Make a day of it and visit
the Botanic Garden,
the Oriental Museum,
the Cathedral,
the Castle,
etc.



Admission to
the Show
is Free!

For more information contact: Chris Barker - cjbandjb@ntlworld.com



BURNHAM NURSERIES

*The UK's premier orchid nursery, we are a unique,
family business with 20 RHS Chelsea Gold Medals.
100s of beautiful orchids in flower all year round.*

- Many unusual species and popular hybrids for sale from seedlings to specimens & sundries too.
- Mail order a speciality.
- Free email newsletter.
- Orchid Masterclass courses.
- Visit our 'Orchid Paradise' Open 7 days a week.
- Coffee Shop with tasty refreshments and gifts.
- Loads of information online at orchids.uk.com.

GET 10% OFF ONLINE ORDERS*! USE THE CODE
BOC2015 IN OUR ONLINE SHOP DURING 2015



*We attend around 30 shows each
year, all over the UK, check our
website for the full list.*

Forches Cross, Newton Abbot, Devon, TQ12 6PZ

Tel: 01626 352233 www.orchids.uk.com

Follow us @burnhamorchids



*Discount off shopping bag total, not
inc. delivery. Only available on line.

EUROPEAN ORCHID CONFERENCE & SHOW

The RHS London Orchid Show is delighted to welcome the prestigious European Orchid Conference and Show to the heart of London; the 17th event of its kind, held in a different European city every 3 years. Not only can you buy stunning Orchids at the show, you will also have the unique opportunity to learn more about this fabulous family of plants at the conference.

THE SHOW 9th - 12th APRIL, 10am - 5pm

Preview Evening, 8th April, 6 - 9pm

Held in the Royal Horticultural Halls, London

Discover sensational displays of rare, hardy and exotic orchids from the finest growers in the world.

Shop from an amazing variety of newest hybrids and unusual orchid species. **Both RHS Halls** being filled with over 50 displays from around the world.

Gain top tips from leading nurserymen and RHS experts.

Beginners and experts can learn more about Orchid growing through an exciting range of practical demonstrations and informal talks.

THE CONFERENCE 8th - 12th APRIL, 9am - 5pm

Open to all, pre-registration essential.

Held in the Royal Horticultural Halls and Royal Botanic Gardens, Kew.

Hear from over 60 of the foremost orchid speakers and specialists from around the world on the latest issues and discoveries.

GALA DINNER SAT. 11th APRIL, 6:30PM

Held at the Royal College of Physicians with and optional tour of the Medicinal Gardens.

Website: eoclondon2015.org.uk

Royal Horticultural Halls and Royal Botanic Gardens, Kew

RHS Registered Charity No. 222879/SC038262

Follow us on



Cultural Pages Orchids as Houseplants

The types of orchids that we grow in our greenhouses, conservatories or in the home would naturally grow in rainforests all over the world. We try to recreate these conditions to get the best from our plants and this need not be as hard as you think!

TEMPERATURE: Orchids usually fall into 1 of 3 categories - **cool**, **intermediate** or **warm** - here is a guide to the temperatures:

Cool:	winter minimum 10°C (50°F)	summer maximum 22°C (75°F)
Intermediate:	winter minimum 12°C (55°F)	summer maximum 25°C (80°F)
Warm:	winter minimum 18°C (65°F)	summer maximum 27°C (85°F)

The winter minimum temperatures are more vital for night-time and it is natural for there to be a rise and fall between day and night and between the seasons.

LIGHT: Orchids do not like bright light, in the rainforests only dappled light will reach them through the leafy canopy. Direct sun, especially in summer, can burn their leaves quite easily so keep them in dappled shade during the warmest months. In winter when the sun is not so strong, full light is fine and indeed necessary to help them to flower well the following season.

WATERING & HUMIDITY: Rainforests are naturally humid places so to create this at home you can grow other suitable companion plants such as ferns and air plants with your orchids. Misting the foliage and aerial roots several times a week, especially in warmer conditions will help the humidity. Take care when misting Phalaenopsis however that the water does not collect in the crown of the plant. Stand the pots on damp pebbles and the moisture will evaporate around the plants. When it comes to actually watering the plants, do not rely on them taking up water from underneath the pot as this can lead to the compost becoming too wet. Instead take your plant to the sink and water from above, letting it run through the open bark-based compost. This is usually done 1-2 times a week with a little orchid fertiliser every 2-3 waterings.

Avoid standing your orchids anywhere too hot and dry in the home. Directly above a radiator or television can provide a lot of dry heat, which simply dehydrates the plants more quickly. A bathroom or kitchen can often be the best places as these naturally are a little more humid.

Many houses now have conservatories attached to them and these can make ideal orchid growing areas. Shade, ventilation and humidity for summer and insulation and heating for winter are necessary though, so a few adjustments are usually required to make the conservatory "orchid friendly". If these changes are not made then a conservatory can be quite desert-like with hot, bright and dry summers and cold winters, far from ideal for orchids.

Clean your orchids as well as your furniture! Household dust will collect on their leaves so wipe them regularly to keep them healthy and looking good.

By Sara Rittershausen, Burnham Nurseries www.orchids.uk.com

In-Charm Orchid Laboratory

Owner Yuan-Chuan Hsiao is a leading *Paphiopedilum* grower and hybridiser from Taiwan

Address:

No.61 Yashow 5th Rd., Showshan, Daya, Taichung,

Taiwan 428, R.O.C.

Mobile: +886 932 977378

Fax: +886-4-25654988

Email: incharm@ms6.hinet.net



Paphiopedilum
In-Charm Maid 'Daya'



Paphiopedilum fanaticum 'In-Charm'

Web: www.incharmorchids.com

We hope to see you at the following show -

European Orchid Show and Conference

9th - 12th April 2015

We will be pleased to receive pre-orders for this show.

Chantelle Orchids (UK) & Hsiang Yu Orchids (Taiwan)

8, Hob Lane, Burton Green,
Warwickshire CV8 1QB

02477040337 or 07510309646

chantelle.shih@chantelle-orchids.com

www.chantelle-orchids.com

We provide a range of species, hybrids & miniatures including cattleyas, encyclias, neofinetias, dendrobiums, angraecums, epidendrums, etc.

Please visit our website for a list of available plants & shows that we will be attending.

We also take mail orders.

Ray Creek (Orchids)



Always lots of quality orchids in stock: -Young Plants
- Flowering sized - species - hybrids - Gift Orchids

Try my Chopped Coconut Husk Growing Medium.

It's getting very popular

Happy to attend shows or present talks in most areas

Ray Creek (Orchids) 7 Jacklin Lane, Luddington, Scunthorpe,
DN17 4RB 01724 798445 email raysinorchids@btinternet.com
website raycreekorchids.com See me on facebook

Congratulations to B.O.C on this new venture. Good Luck!

Orchid Supplies UK

Meeting Orchid Growers Needs

www.orchidsupplies.co.uk

Come to Orchid Supplies UK for all your
Orchid growing products and a friendly
personal service when you need it.

- ♦ Highest quality orchid products
- ♦ NEW Online shop
- ♦ Quick Communication
- ♦ Safe & Fast delivery
- ♦ Akerne's Rain Mix
- ♦ No order too small
- ♦ 5% discount with coupon code 0505
- ♦ Email: info@orchidsupplies.co.uk
- ♦ Tel: 01159550324 or 07910870288

TATTON PARK ORCHID SHOW

Knutsford, Cheshire



7th June 2015

LARGEST ORCHID EVENT IN THE NORTH WEST

Many British Orchid Growers
Association traders and others
to buy from.

Stunning Society Displays

Set in the historic Tennants Hall of a
Stately Mansion House with children's
play area, restaurant, formal gardens
and deer park.

The North of England Orchid Society
invite you to a great day out for all.
Car parking and other charges may apply.
<http://orchid.org.uk/tatton>

Phalaenopsis

(from www.phalaenopsisandmore.co.uk)

Phalaenopsis (moth orchids) are found mostly in Asia, from India to the Philippines, and to the north of Australia. They are monopodial epiphytes (growing on trees), with thick, leathery leaves and showy flowers produced on long inflorescences. Their ease of care makes them the ideal orchid for growing on a bright, shaded windowsill in your home.



Light: *Phalaenopsis* like to be grown in bright shade conditions, but their leaves will burn quickly if exposed to strong sunlight. Generally a bright north windowsill, or an east or west windowsill, with a short amount of either early morning or late afternoon sun will be the ideal spot for growing your moth orchid.

Temperature: Most *Phalaenopsis* species and hybrids are warm growers, and need temperatures between 22 – 28°C during the day, with a nightly drop in temperature to around 15–18°C, although they can tolerate temperatures outside this range for short periods of time without any problems. In winter, when growth rate slows down, a temperature difference of about 5°C between day and night will encourage your plants to initiate flowering.

Water and humidity: *Phalaenopsis* do not have pseudobulbs to store water, neither do they have a rest period. This means that they need to be watered consistently all year round. Water your plants thoroughly once a week during Spring and Summer, and reduce this to once every 10 to 14 days between Autumn and Summer. Ensure good humidity around your plants by standing them on a tray with pebbles filled with water, or by having foliage plants around them. Never allow water to sit in the crown of your plants, and do not let the roots sit in water. A dilute, balanced fertiliser applied every other watering is recommended for strong growth and flowering.

Potting: *Phalaenopsis* can be repotted at any time of the year, although it is best done in early Spring. Use a mixture of coarse bark with charcoal and perlite, although some species are better grown in pure *Sphagnum* moss. Do not overpot, and replace your potting medium every two or three years if using a bark-based medium, or every year if using *Sphagnum* moss.

By Francis J Quesada-Pallares

Hardy Orchids

(From www.HeritageOrchids.co.uk, with permission by Maren Talbot)

Definitions: Hardy orchids are those that grow in the ground in temperate climates similar to our own. They are deciduous, i.e., lose their leaves prior to a period of dormancy and they are able to withstand frost provided their roots are not water logged. By this definition, Pleiones are not hardy orchids, as they require a minimum winter temperature of +2°C and therefore would not normally survive winters in the British Isles. British orchids have either **tubers** (like potatoes) or **rhizomes** (an underground, horizontal stem of a plant that often sends out roots and shoots from its nodes, like the Lily of the Valley).

Cultivation - in a Nutshell (quote from the Hardy Orchid Society Website)
use an open compost, do not allow plants to dry out,
feed them with weak fertiliser, shade them on hot summer days,
protect them from slugs and snails.

And a little more detail..

Prepare the ground, ensuring that the soil is not too heavy and does not dry out in the summer. On heavy soil, incorporate large quantities of compost, grit and other materials that promote drainage. Or you could grow them in a raised bed or in a large pot or tub where you can give them more personal attention. Plant them with 3 - 5 cm (1½ inches) of soil above the growing tip. Cover with a layer of mulch. In nature, they would be among grasses and wild flowers, which would protect from direct sunlight that may burn the young shoots, also from wind which would dry out the soil surface. It is therefore best to plant them facing east, west or even north, so that they don't get scorched by the midday sun. Inspect the soil regularly and water if it appears dry. Hardy orchids must never dry out at the roots or they will die. Most hardy orchids grow happily on any soil, but some require acid soils. If you live in an area with chalky soil, the acid lovers should be potted in large pots or tubs or in specially prepared beds containing ericaceous compost, mixed with horticultural grit, 1 part per volume soil to 1 part per volume grit. In the spring, protect from slugs and snails. As plants increase, you can divide them in late summer, if needed, taking care not to damage the new underground shoots which will be next year's leaves and flowers.



The
British Orchid Growers Association

B · O · G · A

Members

A J Keeling & Sons

01274 682120 johnkeeling@tiscali.co.uk

Burnham Nurseries Ltd & Orchid Paradise

01626 352233 mail@orchids.uk.com www.orchids.uk.com

Equatorial Plants Company

01833 908127 equatorialplants@teesdaleonline.co.uk www.equatorialplants.com

Just in Glass

07910 245690 andy@justinglass.co.uk

Laneside Hardy Orchid Nursery

01995 605537 jcrhutch@aol.com www.lanesidehardyorchids.com

Orchid Alchemy

07864 919935 andrew@orchidalchemy.co.uk www.OrchidAlchemy.com

Phoenix Orchids

01422 362509

Ratcliffe Orchids

01962 777372 ratcliffeorchids@uwclub.net www.ratcliffeorchids.co.uk

Ray Creek Orchids

01724 798445 raysinorchids@btinternet.com www.raycreekorchids.com

Royden Orchids

01494 863224 royden.orchids@gmail.com

Buy quality plants and receive knowledgeable advice



**Visit: www.boga.org.uk for
full member details and our
yearly programme of events or
visit our facebook page.**



Pleurothallidinae spp. Steve & Frances Manning
 New Estover, 4 The Cedars, Nantwich, Cheshire CW5 5GZ
 Tel: 01270 618400 Email: orchidsmann@uwclub.net
Note: Part of this Collection is held at Chester Zoo.
Contact: M Sparrow Upton-by-Chester CH2 1LH
 Tel: 01244 650236 Fax: 01244 371273
m.sparrow@chesterzoo.org www.chesterzoo.org



Stanhopea R J Hartley, Foxdale, Mill Lane,
 Wetley Rocks, Stoke-on-Trent, Staffordshire ST9 0BN
 Tel: 01782 550313 Fax: 01782 550 845
 Email: orchidhartley@bigfoot.com
 Web Site: www.geocities.com/foxdaleorchidsuk

Further details are available from -
 NCCPG, 12, Home Farm, Loseley Park, Guilford, Surrey GU3 1HS.
 Tel: 01483 447540 Website: www.nccpg.com
 Email: info@nccpg.org.uk

Paphiopedilums Ian Dorman

Paphiopedilum species come from subtropical areas of South East Asia and are essentially humus epiphytes rather than terrestrials which has significant implications for their culture either in a greenhouse or in the home. They are a diverse genus of orchids with a widespread geographic range, from the mountains of the Himalayas to the steaming jungles of Borneo, so any cultural advice can only be given in general terms. It is important to obtain as much information as possible about habitat conditions of individual species. Understanding the recent parentage of some of the hybrids will be useful in ensuring optimum culture of these truly exotic plants.

Growing Media or Compost: Experienced growers experiment with a range of composts; for the novice a good quality bark based compost will give the best chance of success. A good quality mix is as follows: 60% good quality medium grade fir bark, 20% large perlite or sponge rock, 10% medium grade horticultural foam, 10% good quality sphagnum moss. Additionally crushed dolomite lime can be added at the rate of one teaspoon per litre of compost

Potting and Re-potting: If plants are purchased in pots then it is important to check the quality of the root system relative to the size of the pot. Gently ease the plant out of the pot, retaining as much of the compost as possible around the roots. Where the plant comes easily out of the pot with only a few roots being evident then it is likely that the plant has been over potted and it should be transferred to a smaller pot without delay and kept a little drier for a few weeks until evidence of new root growth becomes apparent. Paphiopedilums should never be overpotted and it is important to err on the side of caution when selecting the correct size of pot. Clear pots are now available which enables growers to monitor root development more easily. Re-potting should normally be required every 2 years but other cultural factors such as feeding regimes could affect the re-potting cycle.

Watering, Water Quality and Feeding: Preferably use rain water or Reverse Osmosis water (RO) with a pH approaching neutral for Paphiopedilums. Tap water should only be used where the dissolved salts are very low otherwise the plants will not thrive. It is important that a balanced fertilizer is used with the necessary trace elements for good healthy growth. There are many balanced fertilizers on the market for orchids, however those fertilizers with high levels of urea should be avoided as it is difficult for orchids to take up this type of nitrogen. Watering should normally take place early in the day and plants should always be kept moist and never be allowed to become dry at the roots. Paphiopedilums have no mechanisms for storing water other than plant tissue including roots. Frequency of watering will depend on cultural conditions; usually once a week for mature plants, however plants in smaller pots may need watering every other day.

Light levels/Shading: Paphiopedilums should never be subjected to direct sunlight but good quality indirect light is essential to achieve optimum growth and regular

Solihull & District Orchid Society

50th Anniversary Show

Saturday 4th April 2015

11.00 to 16.00

Arden School, Knowle

West Midlands B93 0PT



Orchid Society Displays

Peter White Orchids
Orchid Accessories
Phoenix Orchids
Orchid Alchemy
+ more



Admission £2 • Children Free • Refreshments • Free Parking

flowering. If growing in a greenhouse 60% shade cloth should normally be applied in February and remain in place until late September depending on location and presence of large overhanging trees. In the home, plants can be placed in a north facing window all year round. Paphiopedilums can benefit from additional artificial lighting either to extend the day or provide better quality light during the darker months of the year. There are many different types of artificial lighting on the market. Grow Lux tubes with the correct spectrum for plant growth and flowering have become very popular in recent years.

Heating, Temperature Control & Ventilation: Paphiopedilums generally thrive within an average temperature range from a minimum of 14 °C in winter to 30°C in summer depending on where they come from in the wild. Consequently growers usually divide their plants into intermediate and warm sections to facilitate optimum growth. Temperatures are usually controlled by good quality electronic thermostats and efficient ventilation in summer. Plants can benefit from air movement and ventilation fans are useful in creating a gently breeze throughout the growing area.

Humidity: Humidity levels in the range of 70% are vital in order to grow good quality Paphiopedilums. This can be maintained by a variety of methods such as foggers or sprayers. For individual plants grown in the home gravel trays can be useful to provide local humidity, however care should be taken to avoid placing plants near to radiators.

Pests & Diseases: Fortunately there are few pests which are a problem for Paphiopedilums with the exception of mealy bug which can be difficult to eradicate if well-established within a large collection. In this case regular spraying with a systemic insecticide will be necessary; however preventing these pests entering the growing area in the first place is the preferred option. For individual plants several applications of methylated spirits applied by a tooth brush usually has the desired effect. Disease on Paphiopedilums is of much more concern as bacterial or fungal infections can quickly spread throughout a collection. Prompt attention to control the spread of the disease is important by removal of infected leaves and spraying of affected areas with a good quality fungicide. Cinnamon is extremely useful in treating localised areas of rot.

Flowering: Flowering will normally occur when a plant has at least 2 mature growths and has completed the latest growth. Flower spikes should be staked as soon as possible to avoid kinking so that the flowers are presented in the correct attitude. It is important not to tie the opening flower too early otherwise it may hang its head. When exhibiting plants it is important to ensure the foliage is clean and healthy with any detritus and decaying leaves removed.



National Collections of Orchids

Plant Heritage (The National Council for the Conservation of Plants & Gardens) recognise the following National Collections.

Anguloa Dr Henry Oakeley

77 Copers Cope Road, Beckenham. Kent BR3 1NR

Tel: 0208 658 0358 Fax: 0208 658 0359

Email: henry.oakeley@virgin.net



Catasetineae, Cyrtopodium Max Hopkinson

5 Golf Road, Radcliffe-on-Trent, Nottingham NG12 2GA

Tel: 0115 912 3095 Fax: 0115 933 3460

Email: maxhoppycat@aol.com



Cattleya spp. & Guarianthe Mike Armstrong

Auld Reekie, 25 Church Lane, Muston, Notts NG13 0FD

Tel: 01949 842668

Email: mikandra@tiscali.co.uk



Dendrobium The Curator

Glasgow Botanic Garden, Glasgow G12 0UE Scotland

Tel: 0141 334 2422 Fax: 0141 339 6964

Email: gbg@land.glasgow.gov.uk



Gongora Drs Gary and Maria Firth

9 Harlands Close, Haywards Heath West Sussex RH16 1PS

Open by appointment garyfirth@uwclub.net No of spp: 31



Maxillaria spp. Dr M McIlmurray

Pooh's Corner, 84 Redehall Road, Smallfield,

Surrey RH6 9RS Tel: 01342 842934

Email: michael.mcillmurray@btinternet.com



Phragmipedium spp. including Mexipedium

Arthur L Deakin

Pomarium Cottage, Back Lane, Halam,

Nottingham NG22 8AG Tel: 01636 819974

Email: arthurlomasdeakin@yahoo.co.uk



Southern Counties Orchid Society Contact: Mr Peter Mottershead

33 Kingston Lane, Southwick, Brighton, East Sussex BN42 4SJ

Tel: 01273 597921 **Email:** pp.mottershead@ntlworld.com

Website: www.SouthernCountiesOrchidSociety.com

Venue: Lancing Leisure Centre, Brighton Road (A27) Lancing West Sussex

On: Second Wednesday each month at 19.30

Suffolk Orchid Society Contact: Mrs Jenny Gage

Honeysuckle Cottage, Church Lane, Aldham, Suffolk IP7 6NP

Tel: 01473 822569 **Email:** roystongage@btinternet.com

Website: <http://suffolkorchid.co.uk>

Venue: St Michaels Church Centre, The Drift, Martlesham, Nr Ipswich, IP5 3UY

On: Last Wednesday of month (not Dec, July, or August) 7.30pm to 9.45pm

Sussex Orchid Group Contact: Mrs Val Micklewright

103 North Road, Three Bridges, Crawley, West Sussex RH10 1SQ

Email: val@micklewright.com

Venue: Crawley Horticultural Hall, Ifield Ave., Crawley, RH11 7AJ

On: 3rd Sunday in the month at 2.30. (May and June, no meetings)

Thames Valley Orchid Society Contact: Mr Barry Cook

1 Fontwell Drive, Reading, Berkshire RG30 4QR

Tel: 0118 958 0448 **Email:** barrycookdesign@talktalk.net

Venue: St. Peters Church Hall, St. Peters Street, Marlow SL7 1NQ

On: Generally 3rd. Friday each month 8.00pm start.

Wessex Orchid Society Contact: Dr Grahame Coleman

13 Glen Eyre Drive, Bassett, Southampton SO16 3NQ

Tel: 02380760509 **Email:** lazybones36@hotmail.co.uk

Website: wessexorchidsociety.org.uk

Venue: Shawford Village Hall, nr Winchester

On: Second Sat of month (except March & Aug), 2.00 p.m. for 2.30 p.m.

West Cornwall Orchid Society Contact: Mrs Kit Lindsay

St Martins Villa, 13 Pendarves Road, Camborne, Cornwall TR14 7QB

Tel: 01209 717947 **Email:** r.lindsay672@btinternet.com

Website: www.westcornwallorchidsociety.btck.co.uk

Venue: Camborne Community Centre, Pendarves Rd, Camborne

On: 2nd Sunday of month at 2.00pm except August and December

Writhlington School Orchid Project Contact: Mr Simon Pugh-Jones MBE

6 Park Hill Drive, Frome, Somerset BA11 2LE

Tel: 01373 466736 **Email:** spugh-jones@tiscali.co.uk

Website: www.wsbe.org.uk

York and District Orchid Society Contact: Mr Peter Jones

19 Algarth Rise, Pocklington, York YO42 2HX

Tel: 01759 303691 **Email:** timothyjohnlewis@btinternet.com

Venue: Reading Rooms, Dunnington, York

On: Second Sunday each month 10am to 12.30pm

Orchid Pests and Diseases

Pests and diseases cause serious damage to plants, which as a result, reduces plant vigour, flower count and quality. In some cases the plant may die.

Prevention

Prevention is so much easier than trying to eradicate the problem later so listed here are a few dos and don'ts - Optimum culture, good greenhouse hygiene (sterile tools – pots etc.), avoid overcrowding of plants, morning watering, keeping plants dry for nightfall, segregating new plants, vigilance - early detection and treatment and quarantine or disposal of infected plants.

Common pests -

Scale

Scale insect is the most damaging pest. Boisduval scale from tropical America is the most serious and is widespread in collections. It can seriously debilitate or kill if not controlled quickly. It mainly attacks Cattleyas, Phragmipediums, Dendrobiums and Oncidiums. Early detection is difficult as it hides under sheaths, leaves and pseudobulbs. First indication is yellow patches on the leaf caused by the adult female feeding, with corresponding circular cream coloured scale on the underside of the leaf. Eggs are laid under the scale which protects from insecticides and predators. They hatch into nymphs/crawlers which are very mobile and vulnerable to sprays. The immature males form a cottony mass, often mistaken for mealy bugs, although quite different in appearance - white, narrow and elongate. Brown scale also attacks orchids but is easier to eradicate. The main problem is rapid reproduction, producing overlapping and multiple generations which make control difficult. Control methods are most effective against crawlers for about 2 weeks. Horticultural oils and insecticidal soaps are effective for suppression but are unlikely to eradicate.

Treatment of scale insect

Light infestation – remove visible scales with methylated spirit and cotton wool bud. Remove all sheaths to check for scale underneath.

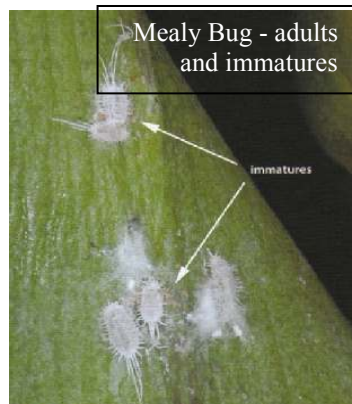
Severe infestation – spray with systemic insecticide at 7-14 day intervals at least 3 times, to eliminate nymphs as they hatch. Repot and isolate.

Available insecticides are Bug Clear Ultra (Acetamiprid), Provado Ultimate Bug Killer concentrate (Thiacloprid), and Provado Ultimate Bug Killer aerosol (Thiacloprid and Methiocarb).

Yellow patches from
Boisduval scale



Boisduval scale developmental
stages: 1. crawlers,
2. mature females, 3. immature
males, 4. mature males



Resistance to insecticides is an increasing problem. Changes of insecticide and treatment methods are recommended.

NB the laws for insecticides are changing rapidly and some may be banned.

Despite regular scheduling of control methods eradication is often unsuccessful and the only option is disposal of the plant.

Mealy bug

It is a common serious pest resembling a small white woodlouse. It attacks all orchids, especially Phalaenopsis and Paphiophedilum and seriously weakens them. The main signs are fluffy white wax, honey dew and sooty moulds on leaves. It has a white waxy protective coating and hides under leaves, sheaths, and flowers and in compost. Unlike scale it is very mobile and can spread rapidly.

Treatment

As for Boisduval Scale.

Spider Mite

Very small sap sucking mite. Not visible to the naked eye, but can be seen with a magnifying glass. Causes mottled leaves and a silvery appearance underneath. It progresses to webs if severe and particularly affects Cymbidiums and Oncidiums.

False Spider Mite

Produces similar symptoms to above. Affects especially Phalaenopsis and Paphiopedilum.

Treatment

Increase humidity as Mites like hot, dry conditions. Wipe leaves with soapy solution, plant oils or spray with Vitax Organic 2 in 1 pest and disease control or SB Plant Invigorator and Bug Killer. If persistent, spray with a systemic insecticide/acaricide (Bug Clear Ultra – Acetamiprid; Borneo – Etoxazole) . Biological control - Phytoseilus as an alternative (used without insecticide) is variably effective.

Aphids

Not a serious pest except on Masdevallia, where they can spread virus. Treat with contact insecticide.

Scottish Orchid Society PERTH Contact: Mr Brian Brocklehurst

146 Balgillo Road, Broughty Ferry, Dundee DD5 3EB
Tel: 01382 778348 **Email:** brian.brocklehurst1@btinternet.com
Venue: Village Hall, Pitcairngreen, Nrth Perth
On: 4th Wednesday Monthly at 19.30, NO MEETINGS June or July

Scottish Country Members Contact: Mr Colin Avery

Dunjop Brae, Bridge of Dee, Castle Douglas DG7 2AE
Tel: 01556 680452 **Email:** colin.avery1999@btinternet.com

The Sheffield & District Orchid Society Contact: Mrs Carolyn McQueen

3 Milton Court, Swinton, Rotherham, S64 8RE
Tel: 01709 587208 **Email:** carolyn.m.mcqueen@gmail.com
Website: www.sheffieldorchids.org
Venue: Ranmoor Parish Centre, Ranmoor Park Road, Sheffield S10 3GX
On: Usually Second Sunday of each month, 10.00am to 12.30pm

Solihull and District Orchid Society Contact: Mr Malcolm Moodie

16 Old Glebe, Tadmerton, Banbury, Oxfordshire OX15 5TH
Tel: 01295 788159 **Email:** LaeliaM@aol.com
Website: www.solihullorchidsociety.org
Venue: St George and Teresa Parish Centre, Dorridge, B93 8EZ
On: First Saturday of the Month 1.00pm. Speaker 2.30. No August meeting.

Somerset, Wiltshire & Dorset Orchid Society Contact: Mr Geoff Hobson

30 Leigh Road, Westbury, BA13 3QL
Tel: 01373823820 **Email:** m5eay.geoff@btinternet.com
Website: swdos.webeden.co.uk
Venue: Pen Selwood Village Hall, Wincanton, Somerset
On: 1st Sunday of each month at 14.30hrs. Visitors welcome, £2 charge

South East Orchid Society Contact: Mrs Karina Sellers

Wildwood, Knoll Hill, Aldington, Kent TN25 7BZ
Tel: 01233 720238 **Email:** karinasellers@btinternet.com
Website: www.southeastorchidsocietyuk.org
Venue: Ashford Rail Staff Hall, Beaver Road, Ashford, Kent. TN23 7RR
On: Generally the last Sunday in the month at 2:00pm. Go to the Website for full information.

South Wales Orchid Study Group Contact: Mrs Lynne Harrendence

Preswylfa, Milo, Llandybie, Llanarthey, Ammanford, Carmarthenshire SA18 3NX
Tel: 01269 269847 **Email:** lynne.harrendence@resqnet.co.uk
Website: www.orchidstudygroup.org.uk **Venue:** National Botanic Garden of Wales
On: Saturday, once a month 11.00am to 1.00pm . Check website for details.

The South West Orchid Society Contact: Mrs Marian Saunders

105 Wembdon Hill, Wembdon, Bridgwater, Somerset TA6 7QB
Tel: 01278 - 455170 **Email:** msaunders1@mail105.co.uk
Venue: West Monkton Village Hall, Monkton Heathfield, Near, Taunton TA2 8NE
On: 2nd Sunday of the month 2:30 to 5:00 pm

Orchid Society of Great Britain - Croydon Group

Contact: Mr Michael Penney 43 Meopham Road, Mitcham, Surrey CR4 1BH
Tel: 020 8648 7295 **Email:** michael@penneyorchid.fsnet.co.uk
Venue: Wallington Reformed Church, Stanley Park Rd, Wallington, Surrey, SM6 0EU
On: 1st Tuesday Monthly at 19.30 NO MEETINGS in January

Orchid Society of Great Britain - Essex Group

Contact: Moira Tarrant
Bumby's, Fox Road, Mashbury, Chelmsford, Essex CM1 4TJ
Tel: 01245 231437 **Email:** m.tarrant@virgin.net
Venue: Billericay South Green Memorial Hall, Southend Road, Billericay CM11 2PR
On: 2nd Saturday Monthly at 1.30pm to 4.00pm. Not July, Aug., Dec.

Pleurothallid Alliance - UK

Contact: Mr D Smallman
10 Willoughby Close, Helpringham, Sleaford NG34 0RX
Tel: 01529 421521 **Email:** donaldsmallman234@btinternet.com
Venue: Wilnecote Parish Hall, Watling Street, Two Gates, Staffs B77 5AD
On: 20th Sept 10.00am - 4.00pm Contact Secretary for meeting details.

Royal Botanic Gardens KEW

Contact: Christopher Ryan,
Tropical Nursery, RBG Kew, Richmond, Surrey, TW9 3AB
Tel: 020 8332 5563 **Email:** c.ryan@kew.org
Website: www.kew.org Open all year, see website for opening times
Further Information: Email or phone for reserve collection visits

Royal Horticultural Society Orchid Committee

Contact: Jill Otway
RHS Orchid Committee, Horticultural Halls, Vincent Square, London
Committee Secretary, jillotway@rhs.org.uk
Tel: 01483 479717 **On:** See Page 31
Venue: RHS Orchid Committee meets at most RHS flower shows, the Chelsea Flower Show, selected society shows and BOC Congresses.

Scottish Orchid Society

Contact: Mr Alan F E Benson (General Secretary)
164 Eskhill, Penicuik, Mid-Lothian, Scotland EH26 8DQ
Tel: 01968-677075 **Email:** secretary@scottishorchid.info
Website: <http://www.scottishorchid.org>

Scottish Orchid Society EDINBURGH

Contact: Mrs Janet Halcrow
2 Carlingnose Court, Nth. Queensferry, Fife KY11 1EP
Tel: 01383 417262 **Email:** janet.halcrow@btinternet.com
Venue: Klondyke Garden Centre, Mortonhall, Edinburgh
On: Last Wednesday monthly at 19.30, NO MEETINGS in July or August

Scottish Orchid Society GLASGOW

Contact: Mr Alan MacKenzie
7 Dunlin Crescent, Houston, Johnstone, Renfrewshire PA6 7JX
Tel: 01505 614756 **Email:** treasurer@scottishorchid.org
Venue: Hopkirk building, Glasgow Botanic Gardens, Glasgow
On: 3rd Monday Monthly at 19.30 NO MEETINGS June, July, or August

Thrips

Very small sap sucking insects cause orange/brown marks on leaves, particularly on Phragmipedium. Treat with systemic insecticide.

Diseases caused by Bacteria and Fungi

Black rot (*Pythium ultimum* and *Phytophthora cactorum*).

Fungal rot affects all orchids especially Cattleyas. Infected areas appear black and watery.

Bacterial soft rot (*Erwinia carotovora*) affects most orchids. *Erwinia chrysanthii* and *Pseudomonas cattleya* particularly affect Phalaenopsis. Bacterial brown rot (*Erwinia cypripedii*)— affects Phalaenopsis, Paphiopedilum and Phragmipedium.

These infections spread rapidly and if they reach the crown or the stem can kill the plant. If treated early plants can be saved, so vigilance is essential. Rot appears brown/black, watery and may smell. Infection can become systemic and therefore incurable.

Prevention and Treatment

Good air movement, ensure leaves and growths dry at night. Remove infected leaf, or whole growth for basal rot. Calcium is a key nutrient in prevention of bacterial/fungal problems. Always use a fertiliser that contains Calcium and top dress the compost with Oyster Shell.

Fungal infection—spray with fungicide.

Bacterial Infection— treat with cinnamon. If unsure of cause of infection use fungicide and cinnamon. Keep plant drier until infection under control. Repot if the infection is severe.

Slugs and snails

Treatment - Slug pellets or Slugit. Vigilance and removal after dark.

Virus

Common in collections. Cymbidium mosaic affects 1 in 5 plants. Odontoglossum ringspot 1 in 100.

Appearances include brown/ black mosaic pattern or chlorotic streaks on leaves. Virus cannot be diagnosed by appearance alone as there are many other causes for these symptoms. Plant appears unhealthy. Diagnosis is confirmed by a laboratory Enzyme – linked immunosorbent assay test (ELISA). Many orchids that carry virus show no symptoms but can infect other plants. There is no effective treatment so discard or isolate. Virus is not spread by insects, except in *Masdevallia* – which are infected by aphids. Virus spread by infected cutting tools, pots etc. - Sterilisation of all tools and good greenhouse practice and hygiene is essential. Avoid overcrowding, assume all plants could be infected.



Bacterial rot caused by *Erwinia carotovora* pv. *carotovora* and *Erwinia chrysanthemi* on a phalaenopsis.

THE INTERNATIONAL ORCHID SHOW

Malvern

...the show within a show!

at



ROYAL THREE
COUNTIES SHOW

12-14 June 2015

A spectacular display of exquisite orchids from UK and International growers.

Come and see the very latest hybrids and species in this captivating family, at Britain's premier food, farming & countryside event, and enjoy the Showground's beautiful location at the foot of the magnificent Malvern Hills.



Three Counties Showground
Malvern, Worcestershire WR13 6NW
threecounties.co.uk/threecounties
For more information/tickets:
malvern-ios.org
Telephone: 01642 654748

Assistance and participating dogs only

Don't miss the RHS Malvern Spring Festival, 7 - 10 May 2015
and the Malvern Autumn Show, 26 - 27 Sept. 2015

Lincolnshire Orchid Group Contact: Mr Richard Baxter,

Hall Farm House, Shelton, Newark-on-Trent NG23 5JG

Tel: 01949850713

Email: richardandsueb@ineedbroadband.co.uk

Website: log-on.org.uk

Venue: Leasingham Village Hall Nr Sleaford

On: 1st Friday of every month except January 7.30pm

Mid Sussex Orchid Society Contact: Dr Maria Firth

9 Harlands Close, Haywards Heath, West Sussex RH16 1PS

Tel: 01444 413626

Email: drmfirth@gmail.com

Venue: Town Hall, 40 Boltro Rd, Haywards Heath, West Sussex RH16 1BA

On: Second Sunday each month at 2.30pm

Mid Wales Orchid Society Contact: Ms Fiona Miles

46 Westcroft, Leominster, Herefordshire, HR6 8HF

Tel: 01568 614489 Email: fiona.miles4@btinternet.com

Venue: Memorial Hall, Presteigne, Powys

On: Second Tuesday of each month at 19.30hrs

North Bucks Orchid Society Contact: Mrs G Bramham

25 Leon Avenue, Bletchley, Milton Keynes, Bucks. MK2 2HL

Tel: 01908 373880

Venue: Rectory Cottages, Church Green Rd, Bletchley MK3 6BJ

On: First Wednesday each month at 19.45hrs. No Meeting in August

North East of England Orchid Society Contact: Pat McLean

3 Springfield Avenue, Eighton Banks, Gateshead NE9 7HL

Tel: 0191 4879515

Email: mcleanpatricia@btinternet.com

Website: www.ne-orchids.org.uk/

Venue: Bowburn Community Centre, Durham Road DH6 5AT

On: Last Tuesday of the Month, 19.00-21.30

North Hampshire Orchid Society Contact: Mr Lawrence Gray

18 Hillside, Abbots Ann, Andover, Hants SP11 7DF

Tel: 07966 061094

Email: lg1592@orchidnuts.org.uk

Website: www.north-hampshire-orchid-society.org.uk

Venue: East Oakley Village Hall, Hill Road, East Oakley, Basingstoke RG23 7JJ

On: Third Sunday at 1400 (with exceptions, see website for details)

The North of England Orchid Society Contact: Mr George Barnes

64, Green Meadows, Westhoughton, Bolton BL5 2BN

Tel: 01942 810958

Email: orchidinfo@orchid.org.uk

Website: www.orchid.org.uk

Venue: Variable, monthly meetings usually on the Saturday of the 2nd weekend of the month. Staging completed by 11.00am show closes 15.00hr For variations consult website or contact us.

Orchid Society of Great Britain Contact: Mrs Val Micklewright

103 North Road, Three Bridges, Crawley, West Sussex RH10 1SQ

Email: val@micklewright.com

Website: www.osgb.org.uk

Venue: Napier Hall, Hide Place, Westminster, London SW1P 4NJ

On: On the first Saturday of each month, 13.30 - 16.30,
13.45 - 14.15 Introductory beginners session, 14.40 Guest Speaker

East Midlands Orchid Society Contact: Mrs Kim Pask

Gleakirk, Bathley Lane, Little Carlton, Newark, Notts NG23 6BY
Tel: 01636 701311 **Email:** kim.pask@btinternet.com
Website: www.eastmidlandsorchidsociety.org
Venue: Bottesford Village Hall, Bottesford, Nottinghamshire.
On: Third Sunday of the Month at 1430 to 1700 (except July & August)

Eric Young Orchid Foundation

Victoria Village, Trinity, Jersey JE3 5HH
Website: www.ericyoungorchidfoundation.co.uk **Tel:** 01534 861963
Further Information: Please phone with reference to opening.

Fenland Orchid Society Contact: Mr David Morgan

61 Elvington, Springwood Estate, Kings Lynn, Norfolk PE30 4TB
Tel: 01553 767032 **Web Site:** www.fenland-os.org.uk
Venue: Terrington Street, Clement Village Hall
On: First Wednesday of each month (Except January), 7.30pm

Glasgow Botanic Gardens Contact: Mr Ewen Donaldson, General Manager

Glasgow Botanic Garden, 730 Great Western Road, Glasgow, G12 0UE
Tel: 0141 276 1614 **Email:** gbg@land.glasgow.gov.uk
Website: www.glasgow.gov.uk Open every day

The Hardy Orchid Society Contact: Mrs M Tarrant

Bumbys, Fox Road, Mashbury, Chelmsford CM1 4TJ
Email: m.tarrant@virgin.net **Website:** www.hardyorchidsociety.org.uk
Further Information: Contact secretary for details of meetings.

Harrogate Orchid Society Contact: Mr Malcolm White

6 Hospital Road, Riddlesden, Keighley, West Yorkshire BD20 5EP
Tel: 01535 661616 **Email:** wmalcolmwhite@gmail.com
Website: www.harrogateorchidsociety.co.uk
Venue: RHS Garden Harlow Carr Harrogate. See website for dates and times

Hinckley & District Orchid Society Contact:

Keith Bates, 79 Hereford Close, Barwell, Leicestershire LE9 8HU
Tel: 01455 446793 **Email:** orchids1941@yahoo.com
Website: <http://hinckleydistrictorchidsociety.com>
Venue: Constitutional Club Chapel St., Barwell, Leicestershire
On: 1st Weds in the month except July & Aug. Start time 20.00 hrs

Lea Valley Orchid Society Contact: Mrs Gillian Radley

3 Burleigh Road, Hertford, Hertfordshire SG13 7HA
Tel: 01992 550897 **Email:** gillian.radley@yahoo.co.uk
Website: www.wix.com/leavalleyos/lvos
Venue: Waterford Village Hall, Waterford, nr. Hertford, A602 - Stevenage to Hertford.
On: Third Wednesday of each month at 7.30 pm.



The Orchid Review

The quarterly supplement to Sander's List of Orchid Hybrids, supplied by the RHS as International Cultivar Registration Authority, is available for a small fee

- **Four issues with** the Orchid Hybrid List, UK **£34** overseas airmail £44
- **Four issues without** the Orchid Hybrid List, UK **£29** overseas airmail £37

Subscribe online or call us on the number below.

Website: www.rhs.org.uk/orchidreview **Tel:** +44 (0)20 7821 3401 **Email:** membership@rhs.org.uk

All that's new in orchids from the world's oldest authority

The Orchid Review is essential reading if you have a passion for orchids. It is the oldest and most influential orchid magazine in the world and is published by the Royal Horticultural Society. Each of the four issues a year are packed with a range of fascinating, inspirational features:

- Profiles of orchid genera, species and hybrids
- Advice on a wide range of orchid problems
- Orchids in the wild, and conservation projects
- Techniques for growing and propagating orchids
- First descriptions of new orchids
- RHS awarded orchids with cultivation advice from the growers of the awarded plants
- World news, event finder, book reviews



Sharing the best in Gardening



黃龍山蘭花園

OOI LENG SUN ORCHIDS nursery & laboratory



Over 50 years & 3 generations of family tradition in Malaysia
Website: www.aaorchids.com **Email:** enquiry@aaorchids.com

Our mission is to give orchid hobbyists an opportunity to grow beautiful orchid species and hybrids. Browse our website to see a selection.

In 2015, we hope to see you at the International Orchid Show, Malvern, UK. Please visit our website to place a pre-order

For a show schedule and pre-order dateline, please check our website at www.aaorchids.com for further details.

In Europe, you can now bid and buy on a limited variety of our plants on our Ebay UK Site. Plants are shipped from our associate's establishment in the UK to European Union residents only. Use the QR code or this link.



<http://myworld.ebay.co.uk/orchidplanter962>



Support your British Orchid Nurseries

(Inclusion in this list does not imply an endorsement by the BOC)

(BOGA) denotes a Member of the British Orchids Growers Association

<http://www.boga.org.uk>

Alphabet Orchids 9 Oak Farm Gardens, Headcorn, Kent TN27 9TZ.

Tel: 01622 891894 Email: alphabetorchids@hotmail.co.uk

Web: www.alphabetorchids.com

Boden Orchids Telford, Shropshire.

Tel: 01952 588635 Email: bodenorchids@hotmail.co.uk

Web: www.bodenorchids.co.uk

Burnham Nurseries (BOGA)

Forches Cross, Newton Abbot, Devon TQ12 6PZ.

Tel: 01626 352233 Web: www.orchids.uk.com

Bush Orchids

1, Willis Road, Kingswood, Bristol, South Gloucestershire BS15 4ST.

Tel: 0117 9768047 Email: info@bushorchids.co.uk

Web: www.bushorchids.co.uk

Butterfields Pleiones

Harvest Hill, Bourne End, Buckinghamshire SL8 5JJ.

Tel: 01628 525455

Chantelle Orchids

8 Hob Lane, Burton Green, Warwickshire CV8 1QB.

Tel: 02477 040337 or 07510309646

Email: chantelle.shih@chantelle-orchids.com

Web: www.chantelle-orchids.com

Dave Parkinson Plants

4, West Bank, Carlton, Goole, East Yorkshire DN14 9PZ

Tel/Fax : 01405 860693 Web: <http://www.daveparkinsonplants.co.uk/>

Easy Orchids

Ewe Bank Gate, Waggon Lane, Upton, Pontefract, West Yorkshire WF9 1JS

Tel: 01977 645891 Web: www.easyorchids.co.uk

Equatorial Plant Company (BOGA)

The Dovecote, Newgate, Barnard Castle DL12 8NW.

Tel: 01833 908127 Email: equatorialplants@teesdaleonline.co.uk

Web: www.equatorialplants.com

Central Orchid Society Contact: Mrs Hazel Percival

19, Beverley Close, Penkridge, Staffordshire, ST19 5SS

Tel: 01785 715613 Website: sites.google.com/site/centralorchidsociety

Venue: The Wrottesley Room, Perton Library, Severn Drive
Perton, Wolverhampton, WV6 7QU

On: Last Saturday of the month at 2.00pm

Cheltenham & District Orchid Society Contact: Mrs Barbara Glayzer

Wayside, Bredon's Norton, Tewkesbury, Glos. GL20 7EZ

Tel: 01684 772082 Email: secretary@cheltenhamorchids.org

Website: www.cheltenhamorchids.org

Venue: St John's Church Hall, St. John's Avenue, Churchdown GL32DA

On: 4th Tuesday of each month at 19.30hrs (except December)

Cheshire and North Wales Orchid Society Contact: Mr Iain Wright

The Windmill, Vennington, Westbury, SHREWSBURY, SY5 9RG

Tel: 01743 884576 Email: contact@canwos.org.uk

Website: www.canwos.org.uk

Venue: St Mary's Church Hall, Handbridge, Chester

On: Last Friday of the month at 19.30 - 10.00pm (except Dec. and Aug.)

Chester Zoo Contact: Mr Mark Sparrow

Chester Zoological Gardens, Upton-by-Chester, Cheshire CH2 1LH

Tel: 01244 650236 Email: m.sparrow@chesterzoo.org

Cumbria Orchid Society Contact: Mrs Angela Rowlands

4 Murray Park Rd, Off Windermere Road, Annan, Dumfriesshire, DG12 6GX

Tel: 01461 392146 Email: angrowlands@hotmail.co.uk

Venue: Morton Community Centre, Wigton Road, Carlisle, Cumbria. CA2 6JP

On: 1st Wednesday of each month. 7.30pm to 10.00pm. except January

Darlington & District Orchid Society Contact: Mr Maurice Local

10 Millais Grove, Billingham, Stockton-on-Tees, TS23 3WL

Tel: 01642 566761 Email: Maurice.local@ntlworld.com

Venue: Sadberge Village Hall, Darlington Website: www.darlingtonos.org

On: 2nd Wednesday of the Month. 7.00pm

The Devon Orchid Society Contact: Mrs Sue Lane

Willand Post Office, Willand Old Village, Cullompton, Devon EX15 2RJ

Tel: 01884 32430 Email: sue@laneroger1.orangehome.co.uk

Website: www.devon.ukos.com

Venue: Burnham Nurseries, Forches Cross, Newton Abbott, Devon

On: 3rd Sunday of the month (with exceptions) 1.30 for 2.00pm until 4.00pm

The Orchid Society of East Anglia Contact: Mrs Joan Butcher

48 Proctor Road, Norwich, Norfolk NR6 7PQ

Tel: 01603 466535 Email: joan324butcher@btinternet.com

Website: www.osea.org.uk

Venue: St Mary's Church Community Room Low Rd, Hellesdon, Norwich NR6 5AT

On: 3rd Friday each month at 19.30

Members of the British Orchid Council

Visit a website address to find more society information.

Birmingham & Midlands Orchid Society Contact: Mrs Pamela Grove

337 Lichfield Road, Four Oaks, Sutton Coldfield
West Midlands B74 4BZ

Tel: 0121 308 2414 **Email:** r.grove@virgin.net

Website: www.bmos.org.uk

Venue: Friends Meeting House, George Road, Edgbaston. Birmingham

On: Second Saturday in the month. 1500hrs *No meeting in August*

Bournemouth Orchid Society Contact: Mr Ken Griffiths

Tally House, Hawthorn Road, South Bockhampton
Christchurch, Dorset BH23 7AD

Tel: 01425 672492 **Email:** kenr.griffiths@virgin.net

Website: www.erythos.com/BOS/

Venue: Bournemouth Natural Science Society, 39 Christchurch Road BH1 3NS

On: Last Friday each month 1930hrs (Except Feb., July, Sept and Dec)

Bristol & West of England Orchid Society Contact: Mr Brian Tomlinson

72 Kent Avenue, Yate, Bristol BS37 7RZ

Tel: 01454 883415 **Email:** jt007F1810@blueyonder.co.uk

Venue: The Good Shepherd Hall, Bishopston, Bristol

On: Second Saturday of each month at 14.30hrs

The British Orchid Growers Association Contact: Mr Jeff Hutchings

74, Croston Road, Garstang, Preston PR3 1HR

Tel: 01995 605537 **Email:** jcrhutch@aol.com

Website: www.boga.org.uk

British Paphiopedilum Society Contact: Mrs Linda Phillips

14, Bolton Crescent, South Ham, Basingstoke RG22 6AZ

Tel: 01256 474911 **Email:** andy@justinglass.co.uk

Website: www.paphiopedilum.org.uk

Cambridge Orchid Society Contact: Mrs Susan Johnson

'Le Touquet', Station Road, Elsenham, Bishop's Stortford, Herts. CM22 6L

Tel: 01279 812704 **Email:** p.johnson63@btinternet.com

Website: www.cambridgeorchidsociety.org.uk

Venue: Harston Village Hall, 20 High Street, Harston, Cambridge CB22 7PX

On: 1st Friday of each month, 7.30pm - 10.00pm (except January and August)

Cardiff & Vale of Glamorgan Orchid Society Contact: Mrs Jean Lewis

74 Pontypridd Road, Barry, The Vale of Glamorgan CF62 7LS

Tel: 01446 403970 **Email:** jeanmarian.lewis@ntlworld.com

Website: cardiffandthevaleorchidsociety.co.uk

Venue: 'The Old School', Sully, Vale of Glamorgan

On: First Saturday in the month at 3.00pm to 4.30pm

Gold Hill Pleiones

Russett Cottage, 11 Olivers Mead, Child Okeford, Dorset DT11 8HT.

Tel: 01258 861849 **Email:** rainer@kretz8.wanadoo.co.uk

Heritage Orchids

4 Hazel Close, Marlow, Buckinghamshire SL7 3PW.

Tel: 01628 486640 **Email:** mtalbot@talktalk.net

Web: www.heritageorchids.co.uk

A J Keeling & Sons (BOGA)

Grange Nurseries, North View Road, Westgate Hill

Bradford, West Yorkshire BD4 6NS

Tel: 01274 682120 **Email:** johnkeeling@tiscali.co.uk

Kool Orchids Nottingham, England, UK. **Tel:** 07910 870288

Email: koolorchids@virginmedia.com **Web:** www.koolorchids.co.uk

Laneside Hardy Orchid Nursery (BOGA)

74 Croston Road, Garstang, Preston PR3 1HR. **Tel:** 01995 605537

Email: jcrhutch@aol.com **Web:** www.lanesidehardyorchids.com

Laurence Hobbs Orchids Ltd Bailiffs Cottage Nursery, Hophurst Lane,

Crawley Down, West Sussex RH10 4LN. **Tel:** 01342 715142

Mobile: 07961 350053 **Email:** lhorchids@btinternet.com

Web: www.laurencehobbsorchids.co.uk

Malcolm Perry Orchids

298 Park Lane, Frampton Cotterell, South Gloucestershire BS36 2BL.

Tel: 01454 773055

Orchid Alchemy (BOGA)

5 Bourne Road, Corby Glen, Grantham NG22 4NR.

Tel: 07867 919935 **Email:** Andrew@orchidalchemy.co.uk

Web: www.orchidalchemy.com

Orchids by Peter White Middleton Cheney, Banbury OX17 2RF.

Tel: 01295 712159 **Email:** peter@orchidsbypeterwhite.co.uk

Web: www.orchidsbypeterwhite.co.uk

Orchids by Post Ltd. Flowervision Nurseries, Spout Lane,

Stanwell Moor, Middlesex TW19 6BN

Tel: 020 3393 8504 **Email:** info@orchidpost.co.uk

Web: www.orchidpost.co.uk

Orchids Direct **Tel:** 07982 245544 or 07771 620486

Email: sales@orchids-direct.co.uk **Web:** www.orchids-direct.co.uk

Orchid Meadow 14 Cullesden Road, Kenley, Surrey CR8 5LR
Email: Anthony.heys@sky.com Web: www.orchidmeadow.co.uk

Phalaenopsis And More

50 Fir Tree Gardens, Shirley, Croydon, CR0 8 JQ
Telephone: 07951 070 637 Email: info@phalaenopsisandmore.co.uk
Website: www.phalaenopsisandmore.co.uk

Phoenix Orchids (BOGA)

Pennine House, 50 Pinnar Lane, Southowram, West Yorkshire HX3 9QT.
Tel: 01422 362509

Ratcliffe Orchids Ltd. (BOGA)

Pitcot Lane, Owslebury, Winchester SO21 1LR. Tel: 01962 777372
Email: ratcliffeorchids@uwclub.net Web: www.ratcliffeorchids.co.uk

Ray Creek Orchids (BOGA)

7 Jacklin Lane, Luddington, Scunthorpe, North Lincolnshire DN17 4RB
Tel: 01724 798445 Email: raysinorchids@btinternet.com
Web: www.raycreekorchids.com

Royden Orchids (BOGA)

Perks Lane, Prestwood, Bucks, HP16 OJD Tel: 01494 863224
Email: royden.orchids@gmail.com

Springwood Pleiones

8 Tredgold Avenue, Bramhope, Leeds LS16 9BU Tel: 0113 2301158
Email: Ken@pleiones.com Web: www.pleiones.com

Orchid Sundries etc.

Growth Technology Ltd. Orchid Focus products
Great Western Way, Taunton, Somerset TA2 6BX
Email: gcsales@growthtechnology.com
Web: www.focus-on-plants.com/

Just in Glass (BOGA)

The Old Brew House, Houghton Lodge and Gardens,
North Houghton, Stockbridge, Hants SO20 6LQ.
Tel: 07910 245690 Email: andy@justinglass.co.uk

Keith Kent Orchid Supplies Nottingham, England, UK.
Tel: 07910 870288 Email: koolorchids@virginmedia.com
Web: www.plantsplus.org.uk & www.orchidsupplies.co.uk

Keith's Plant Books Keith Larkin, 91 Station Road, Great Bowden
Market Harborough, Leics. LE16 7HL Tel: 07770 608930

Web: www.keithsplantbooks.co.uk Email: keith@keithsplantbooks.co.uk



Laarsebeekdreef 4
B-2900 Schoten
Belgium

Email: info@akerne-orchids.com

Belgium's Leading Botanical Orchid Nursery

Akerne Orchids is a family owned business which started in 1971. Over the years Akerne Orchids has acquired a solid international reputation, winning many medals and prizes for the quality of our orchids and displays.

Hope to see you in London at the EOC 2015. Why not visit our website to place a pre-order.

Plants and fertilizer are shipped within the European Union by courier service.



Our own specially developed Rain Mix® fertiliser is the best on the Market!



Visit our website at - www.akerne-orchids.com

RHS Orchid Committee Programme 2015

Contact: jillotway@rhs.org.uk

Date	Venue
Tues. January 13 th 11.30am	Jodrell Laboratory, Kew, Seminar Room
Fri. February 20 th 11.30am	RHS Plant and Design Show Vincent Square
Tues. March 17 th 11.30am	RHS Garden, Wisley
Thurs. April 9 th 2.00- 6.00pm	EOC Show & Conference, Vincent Square
Mon. May 18 th Time tbc	Chelsea Flower Show
Sat. 13 th June 1.30pm	Malvern Royal Three Counties Show
Wed. July 15 th 11.30pm	Meeting room at RHS Vincent Square
Sat. August 8 th 2.00pm Timing tbc	RHS Harlow Carr Gardens with Harrogate OS & North of England OS
Tues. September 15 th 11.30pm	Oxford University Botanic Garden, Rose Lane, OX1 4AZ Exhibition Room
Fri. October 23 rd 11.30am	RHS London Shades of Autumn Show
Sat. November 7 th 1.30pm	OSGB Autumn Show, Wraysbury Village Hall, TW19 5NA Public meeting
Mon. December 7 th 11.30 am	Eric Young Orchid Foundation, Jersey

Dates for BOC Judging Symposiums 2015

Saturday 17th October Caldecote Village Hall, near Cambridge
A second symposium will be announced; check the online Yearbook.

Please note: EOC 2015, Wed. 8th April there will be BOC ribbon judging 12.00-17.00; followed by the Preview Evening 18.00-21.00 for registrants.

STOP PRESS Students at King Charles I School, Kidderminster Working for a Sustainable Future

The Orchid Research Lab. at **King Charles I School** has recently moved into larger premises at the heart of the school, with students being involved both as an integral part of their studies and as part of the school enrichment programme. A core aim of the project is to make a wider range of species available to orchid enthusiasts than are currently seen at meetings. As such **Phil Seaton** would like societies to encourage members to pollinate their plants and donate the resulting seed capsules to his budding young orchid enthusiasts. Seed capsules can be sent to Phil at: **52 Shrubbery Street, Kidderminster, Worcs., DY10 2QY.**

Societies can anticipate flasks of germinated seedlings in return.

LBS Garden Warehouse (LBS Horticulture Ltd)
Standroyd Mill, Cottontree, Colne, Lancs BB8 7BW.
Tel: 01282 873370 Email: webadmin@lbs-group.co.uk
Web: www.lbsgardenwarehouse.co.uk

Orchid Accessories

61 Stanwell Lea, Middleton Cheney, Banbury. Oxon. OX17 2RF.
Telephone 01295 712159
Web: www.orchidaccessories.co.uk

Ratcliffe Orchids Ltd. (BOGA)

Pitcot Lane, Owslebury, Winchester SO21 1LR. Tel: 01962 777372
Email: ratcliffeorchids@uwclub.net Web: www.ratcliffeorchids.co.uk

Simply Control

5 Sawmill Yard, Blair Atholl, Perthshire, Scotland, PH18 5TL
Tel: +44 (0)1796 482 128 Fax: +44 (0)1796 482 111
email: enquiries@simplycontrol.com Web: www.simplycontrol.co.uk

Two Wests & Elliott

Garden and greenhouse supplies Web: www.twowests.co.uk



Address: Orchideeën Wubben

Tollakkerweg 162

3739 JT Hollandsche Rading

The Netherlands

Tel. +31(0)35 577 1222 **Fax:** +31(0)35 577 2103

Email: orchid wubben@planet.nl

Website: www.orchidwubben.com

I hope to see you in 2015 at either Raby Castle Orchid Show in May or Malvern Orchid Show in June.

Pre-order and collect at these shows.

We have 1500 species available for mail order.
Postage and packing is a flat rate of £14. (Valid up to 2 kilo.)





Join the Orchid Society of Great Britain

Being a member of the Orchid Society of Great Britain opens the door to a world of orchid opportunities. Attend our friendly monthly meetings where you'll find orchids from around the world on display and for sale, lectures and cultural advice. Exhibit in local RHS and international shows or travel to see orchids in their natural habitat. Sit back and immerse yourself in our internationally acclaimed quarterly orchid magazine or a book from our comprehensive library. Meetings take place on the first Saturday afternoon of every month at Napier Hall, Hide Place, Westminster, London SW1P 4NJ.

For more information, visit our website
www.osgb.org.uk
or contact our Membership Secretary
osgbmembership@yahoo.co.uk



**Orchid Society of
Great Britain**
Founded 1951

Aug 8th - 9th Harrogate Orchid Society Orchids for Everyone Weekend 10.00am - 4.00pm in the Bramall Learning Centre, RHS Gardens Harlow Carr, Harrogate HG3 1QB Contact: Malcolm White 01535 661616 wmalcolmwhite@gmail.com

Sept. 5th - 6th Orchid Study Group Welsh Orchid Festival. 10.00am - 6.00pm Sat National Botanic Garden of Wales, Carmarthenshire 10.00am - 4.00pm Sun Contact: Lynne Harrendence 01269 269847 lynne.harrendence@resqnet.co.uk

Sept. 6th Durham City Orchid Show organised by Darlington OS, University Botanic Garden, OSGB and Durham University. Josephine Butler College, Durham City 10.00am - 4.00pm Contact: Chris Barker 01642 654748 cjbandjb@ntlworld.com

Sept. 19th Somerset, Wiltshire & Dorset Orchid Society SWDOS Annual Show Gillingham Primary School, Gillingham, Dorset. 10.30 - 16.00 Contact: Geoff Hobson 01747 853475 m5eay.geoff@btinternet.com

Sept. 20th Pleurothallid Alliance - UK Annual General Meeting 10.00 - 16.00 Wilnecote Parish Hall, Tamworth, B77 5AD Contact: Mrs Mary Smallman 01529 421521

Sept. 26th Bournemouth Orchid Society Autumn Show Allendale Centre, Hanham Road, Wimborne, Dorset BH21 1AS 12.00 - 16.30 Contact: Chris Broomfield 07712 479056 chrisbroomfield@ntlworld.com

Oct. 3rd Lincolnshire Orchid Group Autumn Show 10.00am - 4.00pm Leasingham Village Hall, near Sleaford, NG34 8LB Contact: Tony Taylor 01205 461028 info@log-on.org.uk

Oct. 10th Wessex Orchid Society Annual Autumn Show 11.00a.m. - 4.30p.m. Porchester Community School, White Hart Lane PO16 9BD Contact: Dr Grahame Coleman 02380760509 lazybones36@hotmail.co.uk

Oct. 11th East Midlands Annual Orchid Show, Radcliffe Grange Hall, Radcliffe-on-Trent, Nottinghamshire NG122FB. 10.00am to 4.00pm. Contact: Melvyn Stephen 01159198124. melv_and_hil@hotmail.com

Oct. 25th South East Orchid Society Autumn Open Show 1.00pm - 4.00pm Ashford Rail Staff Hall, Beaver Road, Ashford, Kent, TN23 7RR Contact: Mrs Karina Sellers 01233 720238 karinasellers@btinternet.com

Nov. 7th Orchid Society of Great Britain Open Autumn Show. the Village Hall, Wraybury The Green, TW19 5NA 7.30 exhibitors 10.30 visitors Contact: Francis Quesada-Pallares 07951070637 ols_francisjquesadapallares@hotmail.com

Nov. 28th Central Orchid Society Autumn Show 10.00a.m. - 4.00p.m. Perton Community Centre, Church Rd., Perton, Wolverhampton, WV6 7PD Contact: Martin Holland 01902 562568 martin@tlaloc.demon.co.uk

Apr. 9th - 12th European Orchid Show and Conference RHS Halls, Vincent Square, London. Preview Evening: 8th April, 6.00 - 9.00pm (See Pages 4 & 5)

Apr. 25th Central Orchid Society Spring Show 11.00 am - 4.00 pm
Perton Community Centre, Church Rd., Perton, Wolverhampton, WV6 7PD
Contact: Martin Holland 01902 562568 martin@tlaloc.demon.co.uk

May 3rd - 4th Darlington & District Orchid Society Raby Castle Orchid Show
Raby Castle, Staindrop, Darlington DL2 3AH 11.00am - 5.00pm
Contact: Maurice Local 01642 566761 maurice.local@ntlworld.com

May 3rd Fenland Orchid Society Annual Show, Terrington,
St. Clement Village Hall, PE34 4LZ 10.00 am - 4.00 pm
Contact: David Morgan 01553 767032 morg611@aol.com

May 9th Orchid Society of Great Britain - Essex Group Spring Show
Billericay South Green Memorial Hall CM11 2PR 1.30pm - 4.00pm
Contact: Moira Tarrant 01245 231437 m.tarrant@virgin.net

May 10th Sheffield & District Orchid Society Annual Orchid Show
Chatsworth, Cavendish Hall, Edensor, Derbyshire DE45 1PJ 10.00am - 4.00pm
Contact: James Charlesworth 01773745591 j.charlesworth261@btinternet.com

May 16th The Devon Orchid Society 40th Annual Show 10.30am - 4.00pm
Budleigh Salterton Public Hall, Station Rd, Budleigh Salterton, Devon EX9 6RJ
Contact: Nicola Wakley 01404850354 nwakley@googlemail.com

May 16th - 17th Glasgow Orchid Fair. 10.00– 17.00 Glasgow Botanic Garden,
Great Western Road, Glasgow G12 0UE with the Scottish Orchid Society
Contact: 0141 276 1614 Website: <http://www.glasgowbotanicgardens.com>

May 17th Cambridge Orchid Society Show 10.30am - 4.30pm
Harston Village Hall, High Street, Harston, Cambridge CB22 7PX.
Contact: Mrs Margaret Serdean 01763 848895 m.serdean616@btinternet.com

June 6th - 7th Burton Agnes Hall Garden Fair, 11.00am - 4.00pm
Burton Agnes, Drifffield, East Yorkshire, YO25 4NB
Contact: Ray Creek 01724 798445 raysinorchids@btinternet.com

June 7th North of England Orchid Society Annual Show
The Tenants Hall, Tatton Park, Knutsford Cheshire. 10.30am - 16.30pm
Contact: George Barnes 01942 810958 or via website form on
<http://orchid.org.uk/email.htm>

June 12th - 14th Malvern International Orchid Show. 9.00am - 6.00pm
Royal Three Counties Show. One of the best country shows in the UK
Contact: Chris Barker 01642 654748 cjbandjb@ntlworld.com

BOC Photographic Competition 2013



By Nigel Johnson of the
Orchid Society of Great Britain

By Tony Hughes of the
Hardy Orchid Society



By Robert Simmons of the
Orchid Society of Great Britain

Diary of Events 2015

★ Please visit the BOC website for diary updates during 2015. ★
Including an indication of which trade will be at each show.

<http://www.british-orchid-council.info>

Jan. 17th & 18th British Paphiopedilum Society Winter Meeting and AGM.
Ramada Hotel, The Square, Solihull, West Midlands, Birmingham, B91 3RF
Contact: Linda Phillips 01256 474911 andy@justinglass.co.uk

Jan. 31st & Feb. 1st Darlington & District Orchid Society Strikes Orchid
Festival, Northallerton, Strikes Garden Centre 9.00am Sat. & 10.00am Sun. -
5.00pm Contact: Maurice Local 01642 566761 Maurice.local@ntlworld.com

Feb. 8th Mid Sussex Orchid Society Display Ditchling Garden Centre, Sussex
11.00- 16.30 Contact : Dr M Firth drmfirth@hotmail.com

Feb. 14th North Bucks Orchids Society Annual Show 11.00 - 16.00
Flitwick Village Hall, Flitwick, Beds. MK45 1HP
Contact: Bill Dickins william.dickins184@btinternet.com

Feb. 21st South West Orchid Society - Annual Show 10:30 am - 4:00 pm
West Monkton Village Hall, Monkton Heathfield Nr. Taunton TA2 8NE
Contact: Marian Saunders 01278 455170 msaunders1@mail105.co.uk

Feb. 22nd Harrogate Orchid Society Annual Show Britannia Hotel, Bramhope,
Leeds 10.30am - 4.00pm Contact: Malcolm White 01535 661616
twmwhite@aol.com

Feb. 28th Bournemouth Orchid Society Spring Show, Allendale Centre,
Hanham Road, Wimborne, Dorset BH21 1AS 12.00 - 16.30
Contact: Chris Broomfield 07712 479056 chrisbroomfield@ntlworld.com

Mar. 4th Wessex Orchid Society Annual Spring Show
11.30 am - 4.30 pm, Porchester Community School, Whitehart Lane PO16 9BD
Contact: Grahame Coleman 02380760509, lazybones36@hotmail.co.uk

Mar. 7th - 8th Burton Agnes Hall Orchid Festival, 11.00am - 4.00pm
Burton Agnes, Drifffield, East Yorkshire, YO25 4NB
Contact: Ray Creek 01724 798445 raysinorchids@btinternet.com

Mar. 7th Cheltenham & District Orchid Society 40th Anniversary Show,
10.30 - 16.00 Churchdown Community Centre, Parton Rd, Churchdown,
Gloucester, GL3 2JH
Contact: Jan Broadway 01452 616387 showsec@cheltenhamorchids.org

Mar. 21st Suffolk Orchid Society Spring Show, 10am - 4pm
St Michaels Church Centre, The Drift, Martlesham, Nr Ipswich, IP5 3UY
Contact: Mrs Jenny Gage 01473 822569 roystongage@btinternet.com

Mar. 21st Thames Valley Orchid Society Show, Hare Hatch Plant Centre,
London Road, Hare Hatch, Nr. Twyford, Berkshire RG10 9HW
11.00am - 4.00pm Contact: Barry Cook 0118 958 0448
barrycookdesign@talktalk.net

Mar. 21st Orchid Society of Great Britain OSGB Open Spring Show
The Glasshouse, RHS Wisley Gardens. 7:30 for exhibitors - 10:30 public
Contact: Francis Quesada-Pallares 07951 070637
Email: ols_francisjquesadapallares@hotmail.com

Mar. 22nd Darlington & District Orchid Society Annual Show
Sadberge Village Hall 11.00am - 4.00pm
Contact: Maurice Local 01642 566761 maurice.local@ntlworld.com

Mar. 22nd The Orchid Society of East Anglia Spring Show, 10am - 4.30pm
Eaton Parish Hall, Colman Rd, Norwich, NR4 7AW
Contact: Jack Butcher 01603 466535 joan324butcher@btinternet.com

Mar. 22nd Birmingham & Midland OS Spring Show, Birmingham Botanical
Gardens, Westbourne Rd, Edgbaston B15 3TR. 1100hrs - 1630hrs
Contact: Helen Millner 01384 379 729 hjmillner@tiscali.co.uk

Mar. 28th The Bristol & West of England Orchid Society Annual Show
Town Hall, Chipping Sodbury, South Gloucestershire 11.00 am - 4.00 pm
Contact: Brian Tomlinson 01454 883415 jt007f1810@blueyonder.co.uk

Mar. 28th - Apr. 26th Orchid Display, RHS Gardens Wisley, Woking, Surrey.
GU23 6QB

Mar. 28th Hinckley & District Orchid Society, Midlands Largest Orchid Show
St Johns Church, 351 Coventry Rd, Hinckley, Leicestershire LE10 0NP
10.00am - 4.00pm
Contact: K A Bates 01455 446793 keithbates185@hotmail.com

Mar 29th North East of England Show, Bowburn Community Centre,
Durham Road, DH6 5AT 11.00am - 4.00pm
Contact: Brian Coulson, 0191 4207329 brian.coulson@hotmail.com

Mar. 29th South East Orchid Society Spring Show, Ashford Rail Staff Hall,
Beaver Road, Ashford, Kent, TN23 7RR 1.00pm - 4.00pm
Contact: Mrs. Karina Sellers 01233 720238 karinasellers@btinternet.com

Apr. 4th Solihull & District Orchid Society Spring Show (50th Anniversary!)
Arden School, Knowle, West Midlands, B93 0PT 11.00 - 16.00
Contact: Malcolm Moodie 01295 788159 LaeliaM@aol.com

Apr. 5th West Cornwall Orchid Society Spring Show 11.00am – 5.30pm
Camborne Community Centre, Annex, South Terrace, TR14 8SU
Contact: Mrs Kit Lindsay 01209 717947 r.lindsay672@btinternet.com