

# **The British Orchid Council Year Book 2016**



## **A Guide for Orchid Enthusiasts**

**50p or more**

**Donation Please**

**50p or more**

## **The British Orchid Council**

The British Orchid Council brings together amateurs, commercial growers and the scientific community in a single forum. Membership currently comprises the fifty or so British Orchid Societies, the British Orchid Growers' Association, National Botanic Gardens maintaining significant orchid collections at Kew and Glasgow, the Eric Young Orchid Foundation in Jersey and the Royal Horticultural Society, with its major collection at Wisley.

The Council is a registered charity, the main objectives of which may be summarised as promoting and broadening the knowledge of orchids and encouraging excellence in their culture. It organises British Orchid Congresses in different parts of the country, organises lecture tours by leading specialists, maintains a training programme for internationally recognised show judges, produces this annual booklet, represents its members on both European and International bodies and has a strong commitment to conservation.

### **Gold Medal winners at the 2015 European Orchid Show!**

#### **President**

**Mr Max Hopkinson**

5 Golf Road, Radcliffe on Trent, Nottingham NG12 2GA

Tel: 0115 9123095 Email: [maxhoppypcat@aol.com](mailto:maxhoppypcat@aol.com)

#### **Chairman**

**Mr Chris Barker**

17 Surbiton Road

Stockton-on-Tees TS18 5PZ

Tel: 01642 654748

Email: [cjbandjb@ntlworld.com](mailto:cjbandjb@ntlworld.com)

#### **Vice Chairman**

**Lady Samantha Hurley**

17 Veronica Road

London SW17 8QL

Tel: 020 8673 7751

Email: [sam@ballyhurley.com](mailto:sam@ballyhurley.com)

#### **Hon. Secretary**

**Mrs Pat McLean**

3 Springfield Avenue,

Eighton Banks,

Gateshead NE9 7HL

Tel: 0191 4879515

Email: [mcleanpatriciaaw@yahoo.co.uk](mailto:mcleanpatriciaaw@yahoo.co.uk)

#### **Hon. Treasurer**

**Mr Bob Orrick**

1 Hazelmere Close,

Billingham, Teesside

TS22 5RQ

Tel: 01642 554149

Email: [rj-orrick@hotmail.co.uk](mailto:rj-orrick@hotmail.co.uk)

#### **Minutes Secretary**

**Mrs Thelma Orrick**

Address & Tel: See Hon. Treasurer Email: [t-orrick@hotmail.co.uk](mailto:t-orrick@hotmail.co.uk)

---

#### **Front cover**

***Cattleya Dinard 'Blue Heaven'*** by Ken Johnson, Solihull & District  
Orchid Society. **First** in the BOC Photographic Competition

## Contents

2	BOC Information
4 & 5	British Orchid Council Congress - Norwich
6 - 18	Culture Sheets
22 - 25	British Orchid Nurseries
27 - 31	Diary of Events
31	RHS Orchid Committee Programme and BOC Judging Symposiums
34 - 42	Members of the BOC
43	National Orchid Collections
44 - 45	BOC Photographic Competition (continued)

2<sup>nd</sup> *Thelymitra nuda* by David Pearce  
Hardy Orchid Society  
BOC Photographic Competition




**There is a digital version of this Yearbook online.  
Contact Details & Diary of Events will be updated during the year.  
Look for the links during 2016 on the BOC Database at -  
[www.british-orchid-council.info](http://www.british-orchid-council.info)**

Editor: Chris Barker. Email: [cjbandjb@ntlworld.com](mailto:cjbandjb@ntlworld.com)

Destination:  
**NORWICH**

The British Orchid Council presents

# Spectacular orchids



Stunning orchid displays  
International orchid vendors  
Lectures and cultural advice

[www.british-orchid-council.info](http://www.british-orchid-council.info)

**5-6** 2016  
**November**

10am–4pm **£5**

The Holiday Inn  
Norwich North  
Norwich NR6 6JA



## **26<sup>th</sup> BOC Show and Congress** **Holiday Inn, Norwich North, NR6 6JA.** **5/6 November 2016**

**The Venue** has been completely refurbished and combines residential accommodation and all activities under one roof. Special daily rates have been negotiated for Congress residents (see Registration below). For the energetic, there is a Health and Fitness Club, indoor swimming pool, sauna and steam room, and a well equipped Gymnasium. A frequent and cheap shuttle bus opposite the hotel can take those wanting a break into Norwich.

**The Show** will be open on 5<sup>th</sup> & 6<sup>th</sup> November 2016 between 10.00 and 16.00. Set-up will be on Friday 4<sup>th</sup> November followed by a Preview and Buffet for Registrants that evening.

15 Societies have registered to exhibit and 7 specialist orchid nurseries (3 from the UK and 4 from across the EU) will have a wide range of genera to tempt orchid enthusiasts and the general public.

**The Congress** will run alongside the show throughout Saturday and Sunday with talks by International speakers. The RHS Orchid Committee will meet on Saturday afternoon to consider awards.

**Registration** opens on 4th January 2016 with an “Early Bird” discount offer available until 30 June.

Watch for latest arrangements and detailed information on the BOC website  
[www.british-orchid-council.info](http://www.british-orchid-council.info)

**Direct assistance** is available from the Congress Manager by email at  
[BOCCongress2016@ineedbroadband.co.uk](mailto:BOCCongress2016@ineedbroadband.co.uk)

## **Orchids as Houseplants**

The types of orchids that we grow in our greenhouses, conservatories or in the home would naturally grow in rainforests all over the world. We try to recreate these conditions to get the best from our plants and this need not be as hard as you think!

**TEMPERATURE:** Orchids usually fall into 1 of 3 categories - **cool**, **intermediate** or **warm** - here is a guide to the temperatures:

<b>Cool:</b>	winter minimum 10°C (50°F)	summer maximum 22°C (75°F)
<b>Intermediate:</b>	winter minimum 12°C (55°F)	summer maximum 25°C (80°F)
<b>Warm:</b>	winter minimum 18°C (65°F)	summer maximum 27°C (85°F)

The winter minimum temperatures are more vital for night-time and it is natural for there to be a rise and fall between day and night and between the seasons.

**LIGHT:** Orchids do not like bright light, in the rainforests only dappled light will reach them through the leafy canopy. Direct sun, especially in summer, can burn their leaves quite easily so keep them in dappled shade during the warmest months. In winter when the sun is not so strong, full light is fine and indeed necessary to help them to flower well the following season.

**WATERING & HUMIDITY:** Rainforests are naturally humid places so to create this at home you can grow other suitable companion plants such as ferns and air plants with your orchids. Misting the foliage and aerial roots several times a week, especially in warmer conditions will help the humidity. Take care when misting Phalaenopsis however that the water does not collect in the crown of the plant. Stand the pots on damp pebbles and the moisture will evaporate around the plants. When it comes to actually watering the plants, do not rely on them taking up water from underneath the pot as this can lead to the compost becoming too wet. Instead take your plant to the sink and water from above, letting it run through the open bark-based compost. This is usually done 1 - 2 times a week with a little orchid fertiliser every 2nd or 3rd watering.

Avoid standing your orchids anywhere too hot and dry in the home. Directly above a radiator or television can provide a lot of dry heat, which simply dehydrates the plants more quickly. A bathroom or kitchen can often be the best places as these naturally are a little more humid.

Many houses now have conservatories attached to them and these can make ideal orchid growing areas. Shade, ventilation and humidity for summer and insulation and heating for winter are necessary though, so a few adjustments are usually required to make the conservatory “orchid friendly”. If these changes are not made then a conservatory can be quite desert-like with hot, bright and dry summers and cold winters, far from ideal for orchids.

Clean your orchids as well as your furniture! Household dust will collect on their leaves so wipe them regularly to keep them healthy and looking good.

***By Sara Rittershausen, Burnham Nurseries [www.orchids.uk.com](http://www.orchids.uk.com)***



## Phalaenopsis

(from [www.phalaenopsisandmore.co.uk](http://www.phalaenopsisandmore.co.uk))

*Phalaenopsis* (moth orchids) are found mostly in Asia, from India to the Philippines, and to the north of Australia. They are monopodial epiphytes (growing on trees), with thick, leathery leaves and showy flowers produced on long inflorescences. Their ease of care makes them the ideal orchid for growing on a bright, shaded windowsill in your home.



**Light:** *Phalaenopsis* like to be grown in bright shade conditions, but their leaves will burn quickly if exposed to strong sunlight. Generally a bright north windowsill, or an east or west windowsill, with a short amount of either early morning or late afternoon sun will be the ideal spot for growing your moth orchid.

**Temperature:** Most *Phalaenopsis* species and hybrids are warm growers, and need temperatures between 22 – 28°C during the day, with a nightly drop in temperature to around 15–18°C, although they can tolerate temperatures outside this range for short periods of time without any problems. In winter, when growth rate slows down, a temperature difference of about 5°C between day and night will encourage your plants to initiate flowering.

**Water and humidity:** *Phalaenopsis* do not have pseudobulbs to store water, neither do they have a rest period. This means that they need to be watered consistently all year round. Water your plants thoroughly once a week during Spring and Summer, and reduce this to once every 10 to 14 days between Autumn and Summer. Ensure good humidity around your plants by standing them on a tray with pebbles filled with water, or by having foliage plants around them. Never allow water to sit in the crown of your plants, and do not let the roots sit in water. A dilute, balanced fertiliser applied every other watering is recommended for strong growth and flowering.

**Potting:** *Phalaenopsis* can be repotted at any time of the year, although it is best done in early Spring. Use a mixture of coarse bark with charcoal and perlite, although some species are better grown in pure *Sphagnum* moss. Do not overpot, and replace your potting medium every two or three years if using a bark-based medium, or every year if using *Sphagnum* moss.

*By Francis J Quesada-Pallares*

## Dendrobiums

The genus *Dendrobium* is one of the largest in the orchid family and includes more than 1000 species. Dendrobiums occur naturally from India to Japan, south to Australia and east to some of the Pacific islands. Their altitudinal range is from sea-level to more than 3000m. Plant size covers the full gamut from true miniatures to monsters more than 5m tall. With their mostly colourful and attractive flowers, dendrobiums have always been popular in cultivation and although commonly available plants tend to be hybrids, many fine species are also propagated and grown.



In general terms dendrobiums like plenty of light and air movement, and when actively growing, a lot of water. At one extreme are those plants such as *D. aphyllum* which are fully deciduous and thus kept mostly dry for part of the year and at the other are those like *D. cuthbertsonii* which come from high altitudes and must never be dry for more than a day or two. As a general rule, plants which bear leaves throughout the year will appreciate regular watering but much less frequently when growth slows down or stops during the winter months.

Small plants may be mounted or grown in free draining pots whereas larger ones whose natural habit is pendulous are better mounted or planted in hanging containers to allow better root development. Most other plants will form compact upright clumps which are most easily accommodated in pots.

Suitable temperatures will depend on the origins of particular plants. Those from tropical montane habitats or temperate regions of Australia will prefer a winter minimum of around 10 C but will tolerate less but with a rise during the day and a few degrees warmer during the growing season. Plants from monsoon climates will experience dry days for part of the year but night time humidity is high as are light levels during the day so some water is required even in winter just to avoid shrivelling.

Popular hybrids derived from *D. nobile*, a monsoon plant, need to grow strongly after spring flowering so that new growths are fully formed by the time winter comes with cooler and drier conditions. These will encourage the formation of the next flower buds which appear in clusters on stem nodes. Hybrids derived from *D. bigibbum* produce sprays of long lasting flat phalaenopsis-type blooms from the upper stem nodes but are truly tropical in their needs which means a winter minimum of 15°C with a day rise and 18°C minimum during growth.

For those who would like to know more, 'Dendrobium and its relatives' by Lavarack, Harris and Stocker and published by Timber Press in 2006 cannot be too highly recommended.

*By David Menzies*



## Hardy Orchids

(From [www.HeritageOrchids.co.uk](http://www.HeritageOrchids.co.uk), with permission by Maren Talbot)

**Definitions:** Hardy orchids are those that grow in the ground in temperate climates similar to our own. They are deciduous, i.e., lose their leaves prior to a period of dormancy and they are able to withstand frost provided their roots are not water logged. By this definition, Pleiones are not hardy orchids, as they require a minimum winter temperature of +2°C and therefore would not normally survive winters in the British Isles. British orchids have either **tubers** (like potatoes) or **rhizomes** (an underground, horizontal stem of a plant that often sends out roots and shoots from its nodes, like the Lily of the Valley).

**Cultivation - in a Nutshell** (quote from the Hardy Orchid Society Website)

use an open compost,	do not allow plants to dry out,
feed them with weak fertiliser,	shade them on hot summer days,
protect them from slugs and snails.	

### And a little more detail..

Prepare the ground, ensuring that the soil is not too heavy and does not dry out in the summer. On heavy soil, incorporate large quantities of compost, grit and other materials that promote drainage. Or you could grow them in a raised bed or in a large pot or tub where you can give them more personal attention. Plant them with 3 - 5 cm (1½ inches) of soil above the growing tip. Cover with a layer of mulch. In nature, they would be among grasses and wild flowers, which would protect from direct sunlight that may burn the young shoots, also from wind which would dry out the soil surface. It is therefore best to plant them facing east, west or even north, so that they don't get scorched by the midday sun. Inspect the soil regularly and water if it appears dry. Hardy orchids must never dry out at the roots or they will die. Most hardy orchids grow happily on any soil, but some require acid soils. If you live in an area with chalky soil, the acid lovers should be potted in large pots or tubs or in specially prepared beds containing ericaceous compost, mixed with horticultural grit, 1 part per volume soil to 1 part per volume grit. In the spring, protect from slugs and snails. As plants increase, you can divide them in late summer, if needed, taking care not to damage the new underground shoots which will be next year's leaves and flowers.



## *Oncidiums - Dancing Ladies* . . . . . Warm Section

There are several hundred recognised oncidium species, plus a large number of hybrids. The most common oncidiums grow well under normal indoor conditions as well as intermediate to warm greenhouse conditions. They have large pseudobulbs that arise from a mass of thin white roots. The large leaves (up to 2 ft.) emerge from the pseudobulbs. Most species generally flower in autumn although modern hybrids flower all year round.

**Light:** Oncidiums are much more forgiving of bright, even direct, light than other popular orchids, they can handle direct morning light and prefer bright to very bright conditions. The leaves should be bright green as opposed to dark green or reddish green. Reddish green indicates too much light and dark green too little light.

**Water:** During the growing season, water every few days, they should however be moderately dry between watering. Be careful, though, drainage is an absolute priority, and the potting media must be perfectly free draining. Since oncidiums have large, fleshy pseudobulbs and masses of roots, they are very prone to rot. If you see a pseudobulb beginning to rot, cut it out with sterile secateurs and reduce the amount of water. In the winter, reduce watering to monthly or less. They can withstand considerable drought because of their large pseudobulbs. Wrinkled pseudobulbs generally indicate a lack of water.

**Fertiliser:** During the growing season, feed with a weak orchid fertiliser every 2<sup>nd</sup> or 3<sup>rd</sup> watering. Although there are many species and hybrids, in general, the larger the plant, the more heavily it will feed.

**Temperature:** Warm growing oncidiums can be found in many habitats, from semiarid subtropical lowlands to high mountain region cloud forests. Generally, the most popular oncidiums, which feature small yellow flowers, large pseudobulbs and strappy leaves, are intermediate to warm orchids with minimum temperatures ranging from 13°C, to 25°C.

**Humidity:** Oncidiums enjoy moist air, requiring a minimum of 40-50% humidity in the immediate vicinity of the plant. Humidity should be increased with higher temperatures. The ideal humidity is between 55 and 75%, with as much ventilation or air movement as possible without any cold drafts.

**Flowering:** Oncidiums are magnificent in flower. A large, well grown plant may send out six or seven branched sprays of yellow flowers. The effect is very much like a cloud of butterflies each flower resembling dancing ladies.

**Potting:** Oncidiums do not like root disturbance and should only be repotted when either the compost becomes broken down or the pot becomes too small for the new growth. They like to be slightly under potted in a very free draining bark based potting media. In general only repot when necessary but every two years is ideal when the new growth is 2-3 inches long.



*By John Gay*

## ***Oncidium* (Syn. *Odontoglossum*)**

### **Cool Section**

**Oncidium** Cambria type hybrids are widely available and relatively easy to grow. Species *Oncidium* are more challenging and suitable for enthusiasts only.



**Light:** *Oncidium*s (cool growing types) grow under filtered subdued light; in the home they do best in a North or North-East facing window. However, do not place them in the middle of the room as they need to be close to a certain amount of light to do well. In the greenhouse, they need shade from late March until the end of September. We do not recommend putting *Oncidium*s outside during summer due to the risk of wind and sun damage to the leaves.

**Fertiliser:** Most hybrids grow continuously all the year round and so feeding should match. From February until August, feed with high nitrogen (20:10:10), using it at half strength at every second watering. From September until February, feed with high potash (4:4:8), using it at half strength at every second watering. Occasionally a foliar feed can be used as a tonic.

**Watering and Humidity :** Water every 5-7 days, all the year round if they are being grown as house plants. In the greenhouse, water every 4-7 days from the end of February until September, depending on weather conditions. During October and November when not much heat is needed and light is reduced, they may go 10- 14 days between watering. From December until the end of February when heating is on, you will need to water every 7-10 days. The ideal humidity is between 60%-70%, but do not worry if this falls in summer while the ventilators are open. This can be remedied by floor damping in the early evening.

**Temperature:** Cool growing *Oncidium*, mainly from the high Andes need a minimum night temperature of 52°F (11°C). This should rise in the daytime by 10°F (6°C) during Autumn and Winter and by 20°F (11°C) during Spring and Summer. Temperatures a little outside these extremes can be tolerated; ventilation should be used from March to September. *Oncidium*s love fresh, airy conditions and it is a good idea to install a circulating fan, running all the time.

**Flowering:** Most *Oncidium*s flower once each year when mature, the blooms lasting six weeks or more. The main flowering time used to be late winter and spring, but modern breeding has given us plants in flower at any time of the year.

**Potting:** Repotting is best carried out from February to April or late August to early October. The timing depends on the young shoot being between 1 inch and 3 inches in height.

*By John Gay*

## **Paphiopedilums Ian Dorman**

Paphiopedilum species come from subtropical areas of South East Asia and are essentially humus epiphytes rather than terrestrials which has significant implications for their culture either in a greenhouse or in the home. They are a diverse genus of orchids with a widespread geographic range, from the mountains of the Himalayas to the steaming jungles of Borneo, so any cultural advice can only be given in general terms. It is important to obtain as much information as possible about habitat conditions of individual species. Understanding the recent parentage of some of the hybrids will be useful in ensuring optimum culture of these truly exotic plants.

**Growing Media or Compost:** Experienced growers experiment with a range of composts; for the novice a good quality bark based compost will give the best chance of success. A good quality mix is as follows: 60% good quality medium grade fir bark, 20% large perlite or sponge rock, 10% medium grade horticultural foam, 10% good quality sphagnum moss. Additionally crushed dolomite lime can be added at the rate of one teaspoon per litre of compost

**Potting and Re-potting:** If plants are purchased in pots then it is important to check the quality of the root system relative to the size of the pot. Gently ease the plant out of the pot, retaining as much of the compost as possible around the roots. Where the plant comes easily out of the pot with only a few roots being evident then it is likely that the plant has been over potted and it should be transferred to a smaller pot without delay and kept a little drier for a few weeks until evidence of new root growth becomes apparent. Paphiopedilums should never be overpotted and it is important to err on the side of caution when selecting the correct size of pot. Clear pots are now available which enables growers to monitor root development more easily. Re-potting should normally be required every 2 years but other cultural factors such as feeding regimes could affect the re-potting cycle.

**Watering, Water Quality and Feeding:** Preferably use rain water or Reverse Osmosis water (RO) with a pH approaching neutral for Paphiopedilums. Tap water should only be used where the dissolved salts are very low otherwise the plants will not thrive. It is important that a balanced fertilizer is used with the necessary trace elements for good healthy growth. There are many balanced fertilizers on the market for orchids, however those fertilizers with high levels of urea should be avoided as it is difficult for orchids to take up this type of nitrogen. Watering should normally take place early in the day and plants should always be kept moist and never be allowed to become dry at the roots. Paphiopedilums have no mechanisms for storing water other than plant tissue including roots. Frequency of watering will depend on cultural conditions; usually once a week for mature plants, however plants in smaller pots may need watering every other day.

**Light levels/Shading:** Paphiopedilums should never be subjected to direct sunlight but good quality indirect light is essential to achieve optimum growth

and regular flowering. If growing in a greenhouse 60% shade cloth should normally be applied in February and remain in place until late September depending on location and presence of large overhanging trees. In the home, plants can be placed in a north facing window all year round. Paphiopedilums can benefit from additional artificial lighting either to extend the day or provide better quality light during the darker months of the year. There are many different types of artificial lighting on the market. Grow Lux tubes with the correct spectrum for plant growth and flowering have become very popular in recent years.

**Heating, Temperature Control & Ventilation:** Paphiopedilums generally thrive within an average temperature range from a minimum of 14 °C in winter to 30°C in summer depending on where they come from in the wild. Consequently growers usually divide their plants into intermediate and warm sections to facilitate optimum growth. Temperatures are usually controlled by good quality electronic thermostats and efficient ventilation in summer. Plants can benefit from air movement and ventilation fans are useful in creating a gently breeze throughout the growing area.

**Humidity:** Humidity levels in the range of 70% are vital in order to grow good quality Paphiopedilums. This can be maintained by a variety of methods such as foggers or sprayers. For individual plants grown in the home gravel trays can be useful to provide local humidity, however care should be taken to avoid placing plants near to radiators.

**Pests & Diseases:** Fortunately there are few pests which are a problem for Paphiopedilums with the exception of mealy bug which can be difficult to eradicate if well-established within a large collection. In this case regular spraying with a systemic insecticide will be necessary; however preventing these pests entering the growing area in the first place is the preferred option. For individual plants several applications of methylated spirits applied by a tooth brush usually has the desired effect. Disease on Paphiopedilums is of much more concern as bacterial or fungal infections can quickly spread throughout a collection. Prompt attention to control the spread of the disease is important by removal of infected leaves and spraying of affected areas with a good quality fungicide. Cinnamon is extremely useful in treating localised areas of rot.

**Flowering:** Flowering will normally occur when a plant has at least 2 mature growths and has completed the latest growth. Flower spikes should be staked as soon as possible to avoid kinking so that the flowers are presented in the correct attitude. It is important not to tie the opening flower too early otherwise it may hang its head. When exhibiting plants it is important to ensure the foliage is clean and healthy with any detritus and decaying leaves removed.





## Masdevallia

**Light** During the winter months, end of October until March, I do not use any shading on my greenhouses. I use the 50% aluminium shade cloth which is fixed to a central ridge bar about 12 inches from the glass, this allows me to pull the shading up or down as required; i.e. down when the sun is out and up when it's cloudy, it only takes a few minutes.

**Temperature** I aim for a minimum night temperature of 10°C and daytime 15°C. This is not always possible in the summer months and I do the best I can using extractor fans and aluminium shade cloth.

**Water** I only use reverse osmosis water because I live close to two power stations and my rainwater is very acidic. I water the larger pots about every two weeks depending on the weather, and the smaller pots are watered every week, again depending on the weather. I do not grow many plants on tree fern slabs; the ones I have get sprayed twice daily and soaked once a week. My plants are checked regularly and extra water is provided if needed.

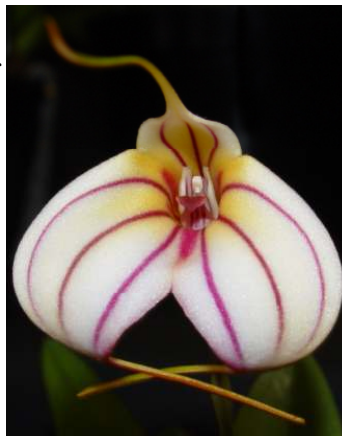
**Humidity** I have an automatic system that sprays under the benches and is controlled by a sensor. I aim to keep the humidity at 80% but this is not possible during hot summer days when a 12 inch extractor fan is working; even then it usually stays above 50%. I also use net screens that fit the door frames, this allows me to leave the doors open day and night from April through to November, weather permitting. All pleurothadinae love fresh air.

**Fertiliser** I recently started to use Akerne's Rain Mix fertiliser at 300ppm from March until the end of May, increasing it to 600ppm in the longer summer days and then I drop down to zero feed from the end of October to the end of February. I also flush the pots with clean R.O. water about once a month.

**Potting** My potting mix at the moment is 60% New Zealand sphagnum moss, 20% sponge foam, and 20% sponge rock. I have stopped using my normal mix of 40% small bark, 20% foam sponge, 20% sponge rock, and 20% chopped sphagnum moss; although it worked for me, I am always trying to get a better growing medium. I am also experimenting with another couple of mixes will hopefully report back on their success in a later article.

### **Pests and diseases**

I aim for early intervention when controlling pests and diseases and spend a lot of time checking each individual plant and quickly deal with any problem before they become serious. Being constantly vigilant keeps any damage to my orchids to an absolute minimum.





## Orchid Pests and Infections

### Orchid Pests and Diseases

Pests and diseases cause serious damage, reduce plant vigour, flower count and quality. The plant may die.

#### Prevention

Optimum culture creates healthy orchids that are more resistant to infection. Prevention is preferable to eradication. Cultural dos and don'ts include: good greenhouse hygiene (sterile tools – pots etc.), avoidance of overcrowding, morning watering, ensuring plants are dry for nightfall, segregation of new plants, constant vigilance - early detection, treatment and quarantine/disposal of infected plants.

### Common pests

#### Scale Insect

**Boisduval** is a hard scale from tropical America commonly found in collections. It can seriously debilitate or kill if not controlled quickly. It mainly attacks Cattleyas, Phragmipediums and Oncidiums. Early detection is difficult as it is concealed under sheaths, leaves and pseudobulbs. First indication is yellow patches on the leaf caused by the adult female feeding, with corresponding circular cream coloured scale on the underside of the leaf. Eggs are laid under the scale which protects them from insecticides and predators. These hatch into mobile nymphs/crawlers which are vulnerable to sprays. Immature males form a cottony mass, often mistaken for mealy bugs, although quite different in appearance- white, narrow and elongate.

**Brown scale** also attacks orchids but is easier to eradicate.

#### Control and Eradication of Scale Insect

Control methods are most effective against crawlers for about 2 weeks. Horticultural oils and insecticidal soaps are effective for suppression but are unlikely to eradicate. Light infestation – remove visible scales with methylated spirit and cotton wool bud. Remove all sheaths to check for scale underneath. Severe infestation – spray with systemic insecticide or Plant Invigorator and Bug Killer (SBPI) at 7-14 day intervals at least 3x, to eliminate nymphs as they hatch. Repot and isolate.

Available systemic insecticides are Bug Clear Ultra (Acetamiprid), and Provado Ultimate Bug Killer aerosol (Thiacloprid and Methiocarb) and Plant Vitality Killermite (Abamectin)

Resistance to insecticides is an increasing problem. Changes of insecticide and treatment methods are recommended. SBPI has a physical mode of action and is unlikely to cause resistance.

Yellow patches from  
Boisduval scale

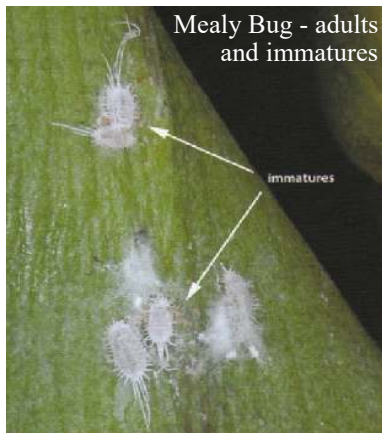


Boisduval scale developmental  
stages: 1. crawlers,  
2. mature females, 3. imma-  
ture males, 4. mature males

Red Spider Mite



Mealy Bug - adults and immatures



**NB Laws for insecticides are changing rapidly and insecticides available now may be banned in the future.**

Despite regular scheduling of control methods eradication is often unsuccessful and the only option is disposal of the plant.

### Mealy Bug

This is a soft scale, a common serious pest resembling a small white woodlouse. It attacks all orchids, especially *Phalaenopsis* and *Paphiophedilum* and seriously weakens them. The main signs are fluffy white wax, honey dew and sooty moulds on leaves. It has a white waxy protective coating and is concealed under leaves, sheaths, flowers and compost. Unlike hard scale it is very mobile and can spread rapidly.

**Treatment** As for Scale.

If **SBPI** is used spray once and again one day later, then at weekly intervals.

### Spider Mite

Very small, sap sucking mite. It is Invisible to the naked eye, but can be seen with a magnifying glass. Causes mottled leaves and a silvery appearance underneath. It progresses to webs if a severe infestation and particularly affects *Cymbidiums* and *Oncidiums*.

### Treatment

Increase humidity. Mites like hot, dry conditions. Use SB Plant Invigorator. Spray 2 or 3 times at 2 or 3 day intervals followed by a few re-applications at weekly intervals. If persistent use Plant Vitality Killermite (Abamectin).

Biological control - *Phytoseiulus* is an alternative (used without insecticide) but is variably effective.

### Aphids

These are not a serious pest except on *Masdevallia*, where they can spread virus. Treat with contact insecticide.

### Thrips

Very small black sap sucking insects, easily overlooked but cause serious damage. They are very mobile and most likely



Thysanoptera, Thrips

seen on the flowers. They cause orange/ brown marks on leaves and disfigure flowers especially Phragmipedium and Cattleya.

Another sign is blackish specks of excrement on leaves. They are difficult to eradicate as they have six stages in their life cycle and are only easily killed in the adult flying insect stage.

#### **Treatment**

Spray with a systemic insecticide or use Provado Vegetable and Fruit Insect Killer (Deltamethrin) or an insecticide containing Spinosad or Westland Resolva Bug Killer (Lambda Cyhalothrin). Blue sticky traps are also useful.

#### **Diseases caused by Bacteria and Fungi.**

##### **Black Rot.**

Fungal rot affects all orchids especially Cattleyas. Infected areas appear black and watery.

##### **Bacterial Soft Rot (Erwinia carotovara)**

This affects most orchids.

##### **Bacterial brown rot (Erwinia cypripedii)**

This affects Phalaenopsis, Paphiopedilum and Phragmipedium.

These infections spread rapidly and if they reach the crown or the stem can kill the plant. If treated early plants can be saved, so vigilance is essential. Rot appears brown/black, **watery** and may smell. Infection can become systemic and therefore incurable.

#### **Prevention**

Good air movement, ensure leaves and growths dry at night. Calcium is a key nutrient in prevention of bacterial/fungal problems. Always use a fertiliser that contains Calcium and top dress the compost with Oyster Shell.

#### **Treatment**

Remove infected leaf or whole growth for basal rot. Keep plant drier and place under a fan. Report if infection is severe.

#### **Fungal Infection**

Spray with Fungicide.

**Bacterial Infection** – treat with cinnamon. If unsure of cause of infection use fungicide and cinnamon.

#### **Slugs and snails**

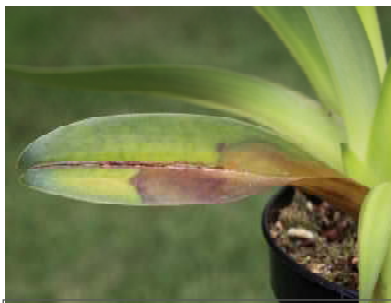
Treatment - Slug pellets or Slugit. Vigilance and removal after dark.

#### **Virus**

Common in collections. Cymbidium mosaic (CyMV) affects 1 in 5 plants.

Odontoglossum ringspot (ORSV) occurs 1 in 100.

The most frequent symptoms are necrotic or chlorotic spots and streaks. Flowers may show colour break. It is difficult to diagnose virus by appearance alone, as there are many other causes for these symptoms. The plant appears unhealthy. Diagnosis is confirmed by a laboratory Enzyme –linked immunosorbent assay test (ELISA). Many orchids that carry virus show no symptoms but can infect other plants. There is no effective treatment, discard or isolate. CyMV and ORSV Viruses are not spread by insects. Masdevallia can be infected by aphids. Viruses are spread by infected cutting tools, pots etc. Sterilisation of all tools and good greenhouse hygiene is



An example of rot found on a  
*Paphiopedilum parishii*

essential. Avoid overcrowding and assume all plants could be infected.

**NB. All Pesticides recommended in this article are available at the time of writing.**

*By Hilary Hobbs*

### Which Spray To Use With Which Pest

Active Ingredient	Product Name	Aphids	Red Spider Mite	Mealy Bug	Scale	Thrips
Fatty Acids and Plant Oils	1. Vitax Organic Pest & Disease Control Concentrate 2. Bayer Organic Bug Free	✓	✓	✓	✓	✓
Methiocarb and Thiocloprid	Provado Ultimate Bug Killer Aerosol	✓	✓	✓	✓	✓
Thiacloprid	1. Provado Ultimate Bug Killer 2. Provado Vine Weevil Killer	✓		✓	✓	
Acetamiprid	Scott's Bug Clear Ultra	✓		✓	✓	✓
Lambda Cyhalothrin	Westland Resolva Bug Killer	✓				✓
Deltamethrin	Provado Vegetable & Fruit Insect Killer	✓				✓
Blend of plant safe physical control surfactants	SB Plant Invigorator and Bug Killer	✓	✓	✓	✓	
Pyrethrum	Vitax House Plant Pest Killer	✓				✓
Abamectin	Plant Vitality Killermite		✓			✓
Spinosad	1. Monterey Garden Insect Spray		✓			✓



# For Growers & Gardeners

UP TO  
30% OFF  
ONLINE

## FREE CATALOGUE

FROM THE UK'S LEADING MANUFACTURER OF

### **Greenhouse Heaters, Thermostats & Grow Lights**

Our latest colour catalogue for  
Professionals & Amateurs features:

- Automated Watering Systems •
- Hydrofoggers Shading • Insulation •
- Misting • Ventilation • LED Lighting •

CALL NOW! **01796 482 128**

OR SHOP AT WWW.**SimplyControl**.CO.UK

Simply Control (239SC), 5 Sawmill Yard,  
Blair Atholl, PH18 5TL

ALWAYS  
QUOTE CODE  
**239SC**

SIMPLY  
**CONTROL**  
EST. 1982

★ ★ ★ ★ ★  
AWARDED  
5 STARS IN  
**THE TIMES**  
GREENHOUSE  
HEATER SURVEY



# THE INTERNATIONAL ORCHID SHOW

AT THE  
**ROYAL THREE COUNTIES SHOW**

17 - 19 June 2016



## BE INSPIRED BY ORCHIDS

A SPECTACULAR DISPLAY OF ORCHIDS  
FROM UK & INTERNATIONAL GROWERS

SEE THE VERY LATEST HYBRIDS AND  
SPECIES FROM THE ORCHID FAMILY

ORCHIDS  
FOR SALE

The International Orchid Show at



**ROYAL THREE  
COUNTIES SHOW**

Three Counties, Malvern  
WR13 6NW

17 - 19 June 2016

For more information visit: [malvern-ios.org](http://malvern-ios.org) or 01642 654748

Three Counties registered charity no. 511868



**Don't miss the: RHS Malvern Spring Festival, 5 - 8 May 2016  
and the: Malvern Autumn Show, 24 - 25 Sept. 2016**



# The Orchid Review



## All that's new in orchids

*The Orchid Review* is essential reading if you have a passion for orchids. It is the oldest and most influential orchid magazine in the world. The four issues a year are packed with a range of fascinating, inspirational articles.

- Profiles of orchids
- Cultivation advice
- Orchids in the wild
- Conservation projects
- Growers and nurseries
- RHS orchid awards
- News, events & books



Now available:  
European Orchid  
Show & Conference  
issue (Sept 2015)  
• Buy it from our  
website

## SUBSCRIBE TODAY

• **Four issues UK £29**  
Overseas airmail £37  
**without** Orchid Hybrid List

• **Four issues UK £34**  
Overseas airmail £44  
**with** Orchid Hybrid List

The Orchid Hybrid List is the quarterly supplement to Sander's List of Orchid Hybrids, supplied by the RHS as International Cultivar Registration Authority

[www.rhs.org.uk/orchidreview](http://www.rhs.org.uk/orchidreview)

tel. +44 (0)20 3176 5820

# Support your British Orchid Nurseries

(Inclusion in this list does not imply an endorsement by the BOC)

(BOGA) denotes a Member of the British Orchids Growers Association

<http://www.boga.org.uk>

**Alphabet Orchids** 9 Oak Farm Gardens, Headcorn, Kent TN27 9TZ.

Tel: 01622 891894 Email: [alphabetorchids@hotmail.co.uk](mailto:alphabetorchids@hotmail.co.uk)

Web: [www.alphabetorchids.com](http://www.alphabetorchids.com)

**Boden Orchids** Telford, Shropshire.

Tel: 01952 588635 Email: [bodenorchids@hotmail.co.uk](mailto:bodenorchids@hotmail.co.uk)

Web: [www.bodenorchids.co.uk](http://www.bodenorchids.co.uk)

**Burnham Nurseries** (BOGA)

Forches Cross, Newton Abbot, Devon TQ12 6PZ.

Tel: 01626 352233 Web: [www.orchids.uk.com](http://www.orchids.uk.com)

**Bush Orchids**

1, Willis Road, Kingswood, Bristol, South Gloucestershire BS15 4ST.

Tel: 0117 9768047 Email: [info@bushorchids.co.uk](mailto:info@bushorchids.co.uk)

Web: [www.bushorchids.co.uk](http://www.bushorchids.co.uk)

**Butterfields Pleiones**

Harvest Hill, Bourne End, Buckinghamshire SL8 5JJ.

Tel: 01628 525455

**Chantelle Orchids**

8 Hob Lane, Burton Green, Warwickshire CV8 1QB.

Tel: 02477 040337 or 07510309646

Email: [chantelle.shih@chantelle-orchids.com](mailto:chantelle.shih@chantelle-orchids.com)

Web: [www.chantelle-orchids.com](http://www.chantelle-orchids.com)

**Dave Parkinson Plants**

4, West Bank, Carlton, Goole, East Yorkshire DN14 9PZ

Tel/Fax : 01405 860693 Web: [www.daveparkinsonplants.co.uk](http://www.daveparkinsonplants.co.uk)

**Easy Orchids**

Ewe Bank Gate, Waggon Lane, Upton, Pontefract, West Yorkshire WF9 1JS

Tel: 01977 645891 Web: [www.easyorchids.co.uk](http://www.easyorchids.co.uk)

**Equatorial Plant Company** (BOGA)

The Dovecote, Newgate, Barnard Castle DL12 8NW.

Tel: 01833 908127 Email: [equatorial9@gmail.com](mailto:equatorial9@gmail.com)

Web: [www.equatorialplants.com](http://www.equatorialplants.com)

**Heritage Orchids**

4 Hazel Close, Marlow, Buckinghamshire SL7 3PW.

Tel: 01628 486640 Email: [mtalbot@talktalk.net](mailto:mtalbot@talktalk.net)

Web: [www.heritageorchids.co.uk](http://www.heritageorchids.co.uk)

**A J Keeling & Sons** (BOGA)

Grange Nurseries, North View Road, Westgate Hill  
Bradford, West Yorkshire BD4 6NS

Tel: 01274 682120 Email: [johnkeeling@tiscali.co.uk](mailto:johnkeeling@tiscali.co.uk)

**Kool Orchids** Nottingham, England, UK. Tel: 07910 870288

Email: [koolorchids@virginmedia.com](mailto:koolorchids@virginmedia.com) Web: [www.koolorchids.co.uk](http://www.koolorchids.co.uk)

**Laneside Hardy Orchid Nursery** (BOGA)

74 Croston Road, Garstang, Preston PR3 1HR. Tel: 01995 605537

Email: [jcrhutch@aol.com](mailto:jcrhutch@aol.com) Web: [www.lanesidehardyorchids.com](http://www.lanesidehardyorchids.com)

**Laurence Hobbs Orchids Ltd** Bailiffs Cottage Nursery, Hophurst Lane, Crawley Down, West Sussex RH10 4LN. Tel: 01342 715142

Mobile: 07961 350053 Email: [lhorchids@btinternet.com](mailto:lhorchids@btinternet.com)

Web: [www.laurencehobbsorchids.co.uk](http://www.laurencehobbsorchids.co.uk)

**Malcolm Perry Orchids**

298 Park Lane, Frampton Cotterell, South Gloucestershire BS36 2BL.

Tel: 01454 773055

**McBean's Orchids**

Resting Oak Hill, Cooksbridge, Lewes, East Sussex BN8 4PR.

Tel: 01273 400228 Web: [www.mcbeansorchids.co.uk](http://www.mcbeansorchids.co.uk)

**Orchid Alchemy** (BOGA)

5 Bourne Road, Corby Glen, Grantham NG22 4NR. Tel: 07867 919935

Email: [Andrew@orchidalchemy.co.uk](mailto:Andrew@orchidalchemy.co.uk) Web: [www.orchidalchemy.com](http://www.orchidalchemy.com)

**Orchids by Post Ltd.** Flowervision Nurseries, Spout Lane,

Stanwell Moor, Middlesex TW19 6BN Tel: 020 3393 8504

Email: [info@orchidpost.co.uk](mailto:info@orchidpost.co.uk) Web: [www.orchidpost.co.uk](http://www.orchidpost.co.uk)

**Orchids Direct** Tel: 07982 245544 or 07771 620486

Email: [sales@orchids-direct.co.uk](mailto:sales@orchids-direct.co.uk) Web: [www.orchids-direct.co.uk](http://www.orchids-direct.co.uk)

**Orchid Meadow** 14 Cullisden Road, Kenley, Surrey CR8 5LR

Email: [Anthony.heys@sky.com](mailto:Anthony.heys@sky.com) Web: [www.orchidmeadow.co.uk](http://www.orchidmeadow.co.uk)

**Phalaenopsis And More**

60, Doveney Close, Orpington, Kent BR5 3WF

Telephone: 07951 070 637 Email: [info@phalaenopsisandmore.co.uk](mailto:info@phalaenopsisandmore.co.uk)

Website: [www.phalaenopsisandmore.co.uk](http://www.phalaenopsisandmore.co.uk)

**Phoenix Orchids** (BOGA)

Pennine House, 50 Pinnar Lane, Southowram, West Yorkshire HX3 9QT.

Tel: 01422 362509

**Ray Creek Orchids** (BOGA)

7 Jacklin Lane, Luddington, Scunthorpe, North Lincolnshire DN17 4RB

Tel: 01724 798445 Email: [raysinorchids@btinternet.com](mailto:raysinorchids@btinternet.com)

Web: [www.raycreekorchids.com](http://www.raycreekorchids.com)

### **Royden Orchids (BOGA)**

Perks Lane, Prestwood, Bucks, HP16 OJD Tel: 01494 863224

Email: [royden.orchids@gmail.com](mailto:royden.orchids@gmail.com)

### **Springwood Pleiones**

8 Tredgold Avenue, Bramhope, Leeds LS16 9BU Tel: 0113 2301158

Email: [Ken@pleiones.com](mailto:Ken@pleiones.com) Web: [www.pleiones.com](http://www.pleiones.com)

### **Orchid Sundries etc.**

**Growth Technology Ltd.** Orchid Focus products

Great Western Way, Taunton, Somerset TA2 6BX

Email: [gcsales@growthtechnology.com](mailto:gcsales@growthtechnology.com) Web: [www.focus-on-plants.com](http://www.focus-on-plants.com)

### **Just in Glass (BOGA)**

The Old Brew House, Houghton Lodge and Gardens,

North Houghton, Stockbridge, Hants SO20 6LQ.

Tel: 07910 245690 Email: [andy@justinglass.co.uk](mailto:andy@justinglass.co.uk)

**Orchid Supplies** Nottingham, England, UK. Tel: 07910 870288 Email: [info@orchidsupplies.co.uk](mailto:info@orchidsupplies.co.uk) Web: [www.orchidsupplies.co.uk](http://www.orchidsupplies.co.uk).

**Keith's Plant Books** Keith Larkin, 91 Station Road, Great Bowden Market Harborough, Leics. LE16 7HL Tel: 07770 608930

Web: [www.keithsplantbooks.co.uk](http://www.keithsplantbooks.co.uk) Email: [keith@keithsplantbooks.co.uk](mailto:keith@keithsplantbooks.co.uk)

**LBS Garden Warehouse** (LBS Horticulture Ltd) Standroyd Mill, Cotton-tree, Colne, Lancs BB8 7BW. Tel: 01282 873370

Web: [www.lbsgardenwarehouse.co.uk](http://www.lbsgardenwarehouse.co.uk)

### **Orchid Accessories**

61 Stanwell Lea, Middleton Cheney, Banbury. Oxon. OX17 2RF.

Telephone 01295 712159 Web: [www.orchidaccessories.co.uk](http://www.orchidaccessories.co.uk)

### **Simply Control**

5 Sawmill Yard, Blair Atholl, Perthshire, Scotland, PH18 5TL

Tel: +44 (0)1796 482 128 Fax: +44 (0)1796 482 111

email: [enquiries@simplycontrol.com](mailto:enquiries@simplycontrol.com) Web: [www.simplycontrol.co.uk](http://www.simplycontrol.co.uk)



## **Wraysbury Orchid Event & O.S.G.B. Open Orchid Show**

**1st October 2016**

**10.30am - 4.00pm**

**Free Admission!**

**Wraysbury Village Hall, The Green,  
Middlesex TW19 5NA**

**Free Parking!**

**Magnificent Orchid Displays  
Orchids and Sundries for Sale**

**For more information contact  
Francis Quesada-Pallares  
07951 070367**







## Orchideengarten

### Discover botanical diversity!

110 years of a family run business in Dahlenburg based near Hamburg. 6,500 square metres of glasshouses and more than 1,000 orchid species and hybrids, many are our own crosses.



We deliver worldwide.

Tel. 0049 (0) 5851 266

21368 Dahlenburg,

Germany

[www.orchideengarten.de](http://www.orchideengarten.de)

We hope to see you at the 2016  
BOC Congress in Norwich.



**Address:** Orchideeën Wubben

Tollakkerweg 162

3739 JT Hollandsche Rading

The Netherlands

**Tel.** +31(0)35 577 1222 **Fax:** +31(0)35 577 2103

**Email:** [orchid.wubben@planet.nl](mailto:orchid.wubben@planet.nl)

**Website:** [www.orchidwubben.com](http://www.orchidwubben.com)



I hope to see you in **2016** at either Raby Castle Orchid Show in May or Malvern Orchid Show in June.

**Pre-order and collect at these shows.**

**We have 1500 species available for mail order.**

**Postage and packing is a flat rate of £14.** (Valid up to 2 kilo.)

# Central Orchid Society

(One of the Founder Members of the British Orchid Council )

## 60<sup>th</sup> Anniversary Show

### April 30th 2016

### 11am to 4pm



1956



2016



*Perton Community Centre  
Church Road, Perton,  
Wolverhampton WV6 7PD  
Visiting Orchid Societies  
Orchid Nurseries & Supplies*

**Admission £2.00    Light Refreshments    Free Parking**



## Diary of Events 2016

[www.british-orchid-council.info](http://www.british-orchid-council.info)

Please visit the website for updates during the year plus trade attending shows.

**Jan. 16<sup>th</sup> & 17<sup>th</sup>** British Paphiopedilum Society Winter Meeting and AGM.  
Ramada Hotel, The Square, Solihull, Birmingham, B91 3RF  
Contact: Joan Elvin Tel: 07794 776550 Email: [joanelvin@yahoo.com](mailto:joanelvin@yahoo.com)

**Feb. 6<sup>th</sup>** Orchid Society of Great Britain OSGB Open Spring Show  
Napier Hall, Hide Place, Westminster SW1P 4NJ 11.00 - 16.00  
[10.00 for exhibitors] Contact: Francis Quesada-Pallares 07951 070637  
[ols\\_francisjquesadapallares@hotmail.com](mailto:ols_francisjquesadapallares@hotmail.com)

**Feb. 20<sup>th</sup>** South West Orchid Society - Annual Show 10:30 am - 4:00 pm  
West Monkton Village Hall, Monkton Heathfield Nr. Taunton TA2 8NE  
Contact: Marian Saunders 01278 455170 [msaunders1@mail105.co.uk](mailto:msaunders1@mail105.co.uk)

**Feb. 27<sup>th</sup>** Bournemouth Orchid Society Spring Show, Allendale Centre,  
Hanham Road, Wimborne, Dorset BH21 1AS 12.00 - 16.30  
Contact: Chris Broomfield 07712 479056 [chrisbroomfield@ntlworld.com](mailto:chrisbroomfield@ntlworld.com)

**Feb. 28<sup>th</sup>** Harrogate Orchid Society Annual Show Britannia Hotel,  
Bramhope, Leeds. 10.30am - 4.00pm  
Contact: Richard Collin 01845 587478 [collin12@btinternet.com](mailto:collin12@btinternet.com)

**Mar. 5<sup>th</sup>** Cheltenham & District Orchid Society Annual Show  
Churchdown Community Centre, Parton Road, Churchdown, Gloucester,  
GL3 2JH 1030 hours - 1600 hours  
Contact: Jan Broadway 01452 616387 [showsec@cheltenhamorchids.org](mailto:showsec@cheltenhamorchids.org)

**Mar. 5<sup>th</sup>** Wessex Orchid Society Annual Spring Show 12 noon - 4.30 pm,  
Porchester Community School. Whitehart Lane PO16 9BD  
Contact: Grahame Coleman 02380760509, [lazybones36@hotmail.co.uk](mailto:lazybones36@hotmail.co.uk)

**Mar. 5<sup>th</sup>** Suffolk Orchid Society Spring Show, 10am - 4pm  
St Michaels Church Centre, The Drift, Martlesham, Nr Ipswich, IP5 3UY  
Contact: Mrs Jenny Gage 01473 822569 [roystongage@btinternet.com](mailto:roystongage@btinternet.com)

**Mar. 5<sup>th</sup> - 6<sup>th</sup>** Burton Agnes Hall Orchid Festival, 11.00am - 4.00pm  
Burton Agnes, Driffield, East Yorkshire, YO25 4NB  
Contact: Ray Creek 01724 798445 [raysinorchids@btinternet.com](mailto:raysinorchids@btinternet.com)

**Mar. 6<sup>th</sup>** The Orchid Society of East Anglia Spring Show, 10am - 4.30pm  
Wroxham Church Hall, Norwich Road, Wroxham, Norfolk NR6 5AT  
Contact: Colin Thorburn, 01842 810520 [colin\\_thorburn@hotmail.com](mailto:colin_thorburn@hotmail.com)

**Mar. 13<sup>th</sup>** Mid Sussex Orchid Society Display Garden Paradise Park,  
Newhaven 11.00- 16.30 Contact : Dr M Firth [drmfrith@hotmail.com](mailto:drmfrith@hotmail.com)

**March** Birmingham & Midlands Orchid Society Show to be announced. Visit the the BOC website or the BMOS website for details.

**Mar. 13<sup>th</sup>** East Midlands Orchid Society Annual Show 10:00 - 16:00  
Lowdham Village Hall, Main Street, Lowdham. NG14 7BD  
Contact: Melv. Stephen 01159 198124 [melv\\_and\\_hil@hotmail.com](mailto:melv_and_hil@hotmail.com)

**Mar. 20<sup>th</sup>** Darlington & District Orchid Society Annual Show  
Sadberge Village Hall 11.00am - 4.00pm  
Contact: Maurice Local 01642 566761 [maurice.local@ntlworld.com](mailto:maurice.local@ntlworld.com)

**Mar. 20<sup>th</sup>** South East Orchid Society Spring Show, Ashford Rail Staff Hall, Beaver Road, Ashford, Kent, TN23 7RR 1.00pm - 4.00pm  
Contact: Karina Sellers 01233 720238 [karinasellers@btinternet.com](mailto:karinasellers@btinternet.com)

**Mar. 26<sup>th</sup>** Solihull & District Orchid Society Spring Show  
Arden School, Knowle, West Midlands, B93 0PT 11.00am - 4.00pm  
Contact: Malcolm Moodie 01295 788159 [LaeliaM@aol.com](mailto:LaeliaM@aol.com)

**Apr. 4<sup>th</sup>** West Cornwall Orchid Society Spring Show 11.00am – 5.30pm  
Camborne Community Centre, Annex, South Terrace, TR14 8SU  
Contact: Mrs Kit Lindsay 01209 717947 [r.lindsay672@btinternet.com](mailto:r.lindsay672@btinternet.com)

**Apr. 10<sup>th</sup>** North East of England Show, Bowburn Community Centre, Durham Road, DH6 5AT 11.00am - 4.00pm  
Contact: Brian Coulson, 0191 4207329 [brian.coulson@hotmail.com](mailto:brian.coulson@hotmail.com)

**Apr. 16<sup>th</sup>** Thames Valley Orchid Society Show, Hare Hatch Sheeplands, Hare Hatch, Nr. Twyford, Berkshire RG10 9HW 11.00am - 4.00pm  
Contact: Barry Cook 0118 958 0448 [barrycookdesign@talktalk.net](mailto:barrycookdesign@talktalk.net)

**Apr. 16<sup>th</sup>** The Bristol & West of England Orchid Society Annual Show  
Town Hall, Chipping Sodbury, South Gloucestershire 11.00am - 4.00pm  
Contact: Brian Tomlinson 01454 883415 [jt007f1810@blueyonder.co.uk](mailto:jt007f1810@blueyonder.co.uk)

**Apr. 23<sup>rd</sup>** Hinckley & District Orchid Society Spring Orchid Show  
Stoke Golding Club, 42 Hinckley Rd., Stoke Golding Warwickshire CV13 6DZ 10.00am - 4.00pm  
Contact: K A Bates 01455 446793 [keithbates185@hotmail.com](mailto:keithbates185@hotmail.com)

**Apr. 30<sup>th</sup>** Central Orchid Society 60th Anniversary Show  
11.00 am - 4.00 pm Perton Community Centre, Church Rd., Perton, Wolverhampton, WV6 7PD Contact: Martin Holland 01902562568  
[administrator@tlaloc.demon.co.uk](mailto:administrator@tlaloc.demon.co.uk)

**May 1<sup>st</sup> & 2<sup>nd</sup>** Darlington Orchid Society Raby Castle Orchid Show  
Raby Castle, Staindrop, Darlington DL2 3AH 11.00am - 5.00pm  
Contact: Maurice Local 01642 566761 [maurice.local@ntlworld.com](mailto:maurice.local@ntlworld.com)

**May 1<sup>st</sup>** Fenland Orchid Society Annual Show, 10.00am - 4.00pm.  
Terrington St. Clement Village Hall, Churchgate Way,  
Terrington St. Clement, Nr. Kings Lynn PE34 4LZ  
Contact: Pat Sones 01366 388421 [pat.sones@btinternet.com](mailto:pat.sones@btinternet.com)

**May 14<sup>th</sup>** Essex Orchid Society Spring Show  
Billericay South Green Memorial Hall CM11 2PR 1.30pm - 4.00pm  
Contact: Moira Tarrant 01245 231437 [moira.tarrant@outlook.com](mailto:moira.tarrant@outlook.com)

**May 14<sup>th</sup> - 15<sup>th</sup>** Glasgow Orchid Fair 10.00 - 18.00 (17.00 Sunday)  
Glasgow Botanic Garden, Great Western Road, Glasgow G12 0UE  
with the Scottish Orchid Society Contact: 0141 276 1614  
Website: [www.glasgowbotanicgardens.com](http://www.glasgowbotanicgardens.com)

**May 14<sup>th</sup>** Cambridge Orchid Society Annual Show will be part of  
Cambridge Botanic Garden's Festival of Plants. Further details regarding  
the Show, its times, the venue and the Festival of Plants will be available  
on the Society's web site [www.cambridgeorchidsociety.org.uk](http://www.cambridgeorchidsociety.org.uk).

**May 21<sup>st</sup>** The Devon Orchid Society 41st Annual Show 10.30am - 4.00pm  
Budleigh Salterton Public Hall, Station Rd, Budleigh Salterton,  
Devon EX9 6RJ  
Contact: Nicola Wakley 01404 850354 [nwakley@googlemail.com](mailto:nwakley@googlemail.com)

**May 21<sup>st</sup>** Lea Valley Orchid Society Show, 10am - 4pm.  
Ware Drill Hall, 17 Amwell End, Ware, Hertfordshire SG12 9HP,  
Contact: Gill Radley 01992 550897 [Gillian.radley@yahoo.co.uk](mailto:Gillian.radley@yahoo.co.uk)

**May 29<sup>th</sup>** Sheffield & District Orchid Society Annual Orchid Show  
Chatsworth, Cavendish Hall, Edensor, Derbyshire DE45 1PJ  
10.00am - 4.00pm Contact: James Charlesworth 01773745591  
[j.charlesworth261@btinternet.com](mailto:j.charlesworth261@btinternet.com)

**June 5<sup>th</sup>** North of England Orchid Society Annual Show  
The Tenants Hall, Tatton Park, Knutsford Cheshire. 10.30am - 6.30pm  
Contact: George Barnes 01942 810958 or via website form on  
<http://orchid.org.uk/email.htm>

**June 17<sup>th</sup> - 19<sup>th</sup>** Malvern International Orchid Show. 9.00am - 6.00pm  
Royal Three Counties Show. One of the best country shows in the UK  
Contact: Chris Barker 01642 654748 [cjbandjb@ntlworld.com](mailto:cjbandjb@ntlworld.com)

**Aug 6<sup>th</sup> - 7<sup>th</sup>** Harrogate Orchid Society Orchids for Everyone Weekend  
10.00am - 4.00pm in the Bramall Learning Centre,  
RHS Gardens Harlow Carr, Harrogate HG3 1QB  
Contact: Dr Richard Collin 01845 587478 [collin12@btinternet.com](mailto:collin12@btinternet.com)

**Aug 20<sup>th</sup> - 21<sup>st</sup>** BOGA Summer Orchid Fair Cole Court  
Twickenham & District Masonic Hall, 150 London Road, Twickenham  
TW1 1HD 10.30 - 4.30 Saturday and 10.00 - 4.30 Sunday

**Sept. 3<sup>rd</sup> - 4<sup>th</sup>** Welsh Orchid Festival. National Botanic Garden of Wales,  
Carmarthenshire 10.00am - 6.00pm Sat. 10.00am - 4.00pm Sun.  
Contact: Lynne Harrendence 01269 269847  
[lynne.harrendence@resqnet.co.uk](mailto:lynne.harrendence@resqnet.co.uk)

**Sept. 4<sup>th</sup>** Durham Orchid Show organised by Darlington Orchid Society,  
University Botanic Garden, and Durham University.  
Josephine Butler College, Durham City 10.00am - 4.00pm  
Contact: Chris Barker 01642 654748 [cjbandjb@ntlworld.com](mailto:cjbandjb@ntlworld.com)

**Sept. 17<sup>th</sup>** Somerset, Wiltshire & Dorset Orchid Society Annual Show  
Gillingham Primary School, Gillingham, Dorset. 10.30 - 16.00  
Contact: Geoff Hobson 01747 853475 [m5eay.geoff@btinternet.com](mailto:m5eay.geoff@btinternet.com)

**Sept 18<sup>th</sup>** Pleurothallid Alliance - UK Annual General Meeting  
10.00 - 16.00 Wilnecote Parish Hall, Tamworth, B77 5AD  
Contact: Mrs Mary Smallman 01529 421521

**Sept. 24<sup>th</sup>** Bournemouth Orchid Society Autumn Show  
To be advised. 12.00 - 16.30 Contact: Chris Broomfield 07712 479056  
[chrisbroomfield@ntlworld.com](mailto:chrisbroomfield@ntlworld.com) Visit our website for details.

**Oct. 1<sup>st</sup>** Lincolnshire Orchid Group Autumn Show 10.00am - 4.00pm  
Leasingham Village Hall, near Sleaford, NG34 8LB  
Contact: Tony Taylor 01205 461028 [info@log-on.org.uk](mailto:info@log-on.org.uk)

**Oct. 1<sup>st</sup>** Orchid Society of Great Britain OSGB Open Autumn Show  
Wraysbury Village Hall, The Green, TW19 5NA  
Contact: Francis Quesada-Pallares 07951 070637  
Email: [ols\\_francisjquesadapallares@hotmail.com](mailto:ols_francisjquesadapallares@hotmail.com)

**Oct. 8<sup>th</sup>** Wessex Orchid Society Annual Autumn Show 11.00am - 4.30pm  
Porchester Community School, White Hart Lane PO16 9BD  
Contact: Dr Grahame Coleman 02380760509  
[lazybones36@hotmail.co.uk](mailto:lazybones36@hotmail.co.uk)

**Oct. 9<sup>th</sup>** Orchid Society of Great Britain - Croydon Group Open Orchid  
Show Diamond Centre For Disabled Riders, Woodmansterne Rd,  
Carshalton, Surrey. 11.00 AM - 4.00 PM  
Contact: Derek Belcher 020 8715 3635 [orchiddb@outlook.com](mailto:orchiddb@outlook.com)

---

---

**Nov. 5<sup>th</sup> & 6<sup>th</sup> (Preview evening 4<sup>th</sup>)**

**BOC Show and Congress**

Holiday Inn, Norwich North, NR6 6JA 10.00 am - 4.00 pm

Contact: Richard Baxter 01949 850713

[BOCCongress2016@ineedbroadband.co.uk](mailto:BOCCongress2016@ineedbroadband.co.uk)

---

---

**Nov. 26<sup>th</sup>** Central Orchid Society Autumn Show 10.00a.m. - 4.00p.m.

Perton Community Centre, Church Rd., Perton,

Wolverhampton, WV6 7PD

Contact: Martin Holland 01902 562568 [martin@tlaloc.demon.co.uk](mailto:martin@tlaloc.demon.co.uk)

**RHS Orchid Committee, Programme 2016**

Contact: [jillotway@rhs.org.uk](mailto:jillotway@rhs.org.uk)

Date	Venue
Tues. January 26 <sup>th</sup> 11.30am	Jodrell Laboratory, Seminar Room, Royal Botanic Garden, Kew
Tues. February 16 <sup>th</sup> 11.30am	RHS Spring Show, Vincent Square
Tues. March 15 <sup>th</sup> 11.30am	RHS Garden, Wisley
Fri. April 1 <sup>st</sup> 2.00pm	London Orchid Show, Vincent Square
Mon. May 23 <sup>rd</sup> 8.00am tbc	Chelsea Flower Show
Sat. 18 <sup>th</sup> June 1.30pm	Malvern Royal Three Counties Show
Tues. July 12 <sup>th</sup> 11.30am	Vincent Square
Sat. Aug. 6 <sup>th</sup> 1.00pm Business 1.30pm Public	RHS Harlow Carr Gardens with Harrogate OS & North of England OS
Tues. Sept. 13 <sup>th</sup> 11.30am	Vincent Square
Fri. October 28 <sup>th</sup> 11.30am	RHS London Shades of Autumn Show
Sat. Nov. 5 <sup>th</sup> 1.30pm Business 2.00pm Public	BOC Congress at the Holiday Inn, Cromer Road, Norwich North NR6 6JA
Tues. December 6 <sup>th</sup> 11.30 am	Vincent Square

**Dates for BOC Judging Symposiums 2016.**

One at Malvern International Orchid Show on Friday June 17<sup>th</sup>

A second symposium will take place on date & venue to be confirmed.

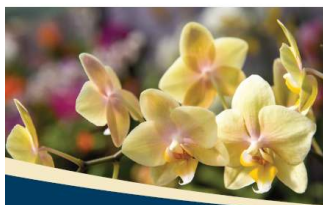


# RABY CASTLE

One of England's Finest Medieval Castles

## 16<sup>th</sup> ANNUAL ORCHID SHOW

**Sunday 1st May - Monday 2nd May 2016 11.00am - 5.00pm**  
Fabulous Orchid Society Displays • Lectures & Demonstrations  
Orchid Growing Advice • Plants for Sale



Raby Castle, Staindrop, Darlington, County Durham DL2 3AH  
Tel: 01833 660202 Email: [admin@rabycastle.com](mailto:admin@rabycastle.com) [www.rabycastle.com](http://www.rabycastle.com)



## HINCKLEY & DISTRICT ORCHID SOCIETY SPRING SHOW

**SATURDAY 23rd APRIL 2016**

**SHOW OPENS 10.00am to 4.00pm**

### NEW VENUE

**GUEST SOCIETIES**

**FREE PARKING**

**STOKE GOLDING CLUB**

**42 HINCKLEY RD**

**STOKE GOLDING.**

**GUEST TRADE**

**REFRESHMENTS**





Laarsebeekdreef 4  
B-2900 Schoten  
Belgium

Email: [info@akerne-orchids.com](mailto:info@akerne-orchids.com)

---

## Belgium's Leading Botanical Orchid Nursery

---

Akerne Orchids is a family owned business which started in 1971. Over the years Akerne Orchids has acquired a solid international reputation, winning many medals and prizes for the quality of our orchids and displays.

**Hope to see you at the London Show  
& the BOC Congress. Why not visit  
our website to place a pre-order.**

Plants and fertilizer are shipped within the European Union by courier service.



**Our own specially developed Rain Mix®  
fertiliser is the best on the Market!**



**RAIN MIX®**  
all seasons orchid fertiliser

---

Visit our website at - [www.akerne-orchids.com](http://www.akerne-orchids.com)

---

## Members of the British Orchid Council

### **Birmingham & Midlands Orchid Society** Contact: Mrs Pamela Grove

337 Lichfield Road, Four Oaks, Sutton Coldfield

West Midlands B74 4BZ

**Tel:** 0121 308 2414 **Email:** [r.grove@virgin.net](mailto:r.grove@virgin.net)

**Website:** [www.bmos.org.uk](http://www.bmos.org.uk)

**Venue:** Friends Meeting House, George Road, Edgbaston. Birmingham

**On:** Second Saturday in the month. 1500hrs *No meeting in April, August*

### **Bournemouth Orchid Society** Contact: Mr Ken Griffiths

Tally House, Hawthorn Road, South Bockhampton

Christchurch, Dorset BH23 7AD

**Tel:** 01425 672492 **Email:** [info@bournemouthorchidsociety.org.uk](mailto:info@bournemouthorchidsociety.org.uk)

**Website:** [www.bournemouthorchidsociety.org.uk](http://www.bournemouthorchidsociety.org.uk)

**Venue:** Bournemouth Natural Science Soc., 39 Christchurch Rd, BH1 3NS

**On:** Last Friday each month 1930hrs, Except Feb, Sept. (shows)  
and July & December (other venues) - see our website

### **Bristol & West of England Orchid Society** Contact: Mr Brian Tomlinson

72 Kent Avenue, Yate, Bristol BS37 7RZ

**Tel:** 01454 883415 **Email:** [jt007F1810@blueyonder.co.uk](mailto:jt007F1810@blueyonder.co.uk)

**Website:** [www.bristolorchids.club](http://www.bristolorchids.club)

**Venue:** The Good Shepherd Hall, Bishopston, Bristol

**On:** Second Saturday of each month at 14.30hrs

### **The British Orchid Growers Association** Contact: Mr Jeff Hutchings

74, Croston Road, Garstang, Preston PR3 1HR

**Tel:** 01995 605537 **Email:** [jcrhutch@aol.com](mailto:jcrhutch@aol.com)

**Website:** [www.boga.org.uk](http://www.boga.org.uk)

### **British Paphiopedilum Society** Contact: Joan Elvin

C/O Shadrack's Paddock, Owslebury, Winchester SO21 1LR

**Tel:** 07794 776550 **Email:** [joanelvin@yahoo.com](mailto:joanelvin@yahoo.com)

**Website:** [www.paphiopedilum.org.uk](http://www.paphiopedilum.org.uk)

### **Cambridge Orchid Society** Contact: Mrs Susan Johnson

'Le Touquet', Station Rd, Elsenham, Bishop's Stortford, Herts. CM22 6LG

**Tel:** 01279 812704 **Email:** [p.johnson63@btinternet.com](mailto:p.johnson63@btinternet.com)

**Website:** [www.cambridgeorchidsociety.org.uk](http://www.cambridgeorchidsociety.org.uk)

**Venue:** Harston Village Hall, 20 High St., Harston, Cambridge CB22 7PX

**On:** 1<sup>st</sup> Friday in the month, 7.30pm -10.00pm (*no meetings Jan. & Aug.*)

### **Cardiff & Vale of Glamorgan Orchid Society** Contact: Mrs Jean Lewis

74 Pontypridd Road, Barry, The Vale of Glamorgan CF62 7LS

**Tel:** 01446 403970 **Email:** [aeranthos@yahoo.com](mailto:aeranthos@yahoo.com)

**Website:** [cardiffandthevaleorchidsociety.co.uk](http://cardiffandthevaleorchidsociety.co.uk)

**Venue:** 'The Old School', Sully, Vale of Glamorgan

**On:** First Saturday in the month at 3.00pm to 4.30pm

**Central Orchid Society Contact: Mrs Hazel Percival**

19, Beverley Close, Penkridge, Staffordshire, ST19 5SS  
**Tel:** 01785 715613  
**Website:** [sites.google.com/site/centralorchidsociety](http://sites.google.com/site/centralorchidsociety)  
**Venue:** The Wrottesley Room, Perton Library, Severn Drive  
Perton, Wolverhampton, WV6 7QU  
**On:** Last Saturday of most months at 2.00pm

**Cheltenham & District Orchid Society Contact: Mrs Barbara Glayzer**

Wayside, Bredon's Norton, Tewkesbury, Glos., GL20 7EZ  
**Tel:** 01684 772082 **Email:** [secretary@cheltenhamorchids.org](mailto:secretary@cheltenhamorchids.org)  
**Website:** [www.cheltenhamorchids.org](http://www.cheltenhamorchids.org)  
**Venue:** St John's Church Hall, St. John's Avenue, Churchdown GL32DA  
**On:** 4th Tuesday of each month at 19.30hrs (except December)

**Cheshire and North Wales Orchid Society Contact: Mr Iain Wright**

The Windmill, Vennington, Westbury, Shrewsbury, SY5 9RG  
**Tel:** 01743 884576 **Email:** [contact@canwos.org.uk](mailto:contact@canwos.org.uk)  
**Website:** [www.canwos.org.uk](http://www.canwos.org.uk)  
**Venue:** St Mary's Church Hall, Handbridge, Chester  
**On:** Last Friday of the month at 7.30 - 10.00pm (except July, Aug. & Dec.)

**Chester Zoo Contact: Phil Esseen**

Chester Zoological Gardens, Upton-by-Chester, Cheshire CH2 1LH  
**Tel:** 01244 650236 **Email:** [p.esseen@chesterzoo.org](mailto:p.esseen@chesterzoo.org)

**Cumbria Orchid Society Contact: Mrs Angela Rowlands**

4 Murray Park Rd, Off Windermere Road, Annan,  
Dumfriesshire, DG126GX  
**Tel:** 01461392146 **Email:** [angrowlands@hotmail.co.uk](mailto:angrowlands@hotmail.co.uk)  
**Venue:** Morton Community Centre, Wigton Rd, Carlisle,  
Cumbria. CA2 6JP  
**On:** 1st Wednesday of each month. 7.30pm to 10.00pm. except January

**Darlington & District Orchid Society Contact: Mr Maurice Local**

10 Millais Grove, Billingham, Stockton-on-Tees, TS23 3WL  
**Tel:** 01642566761 **Email:** [Maurice.local@ntlworld.com](mailto:Maurice.local@ntlworld.com)  
**Venue:** Sadberge Village Hall, Darlington  
**Website:** [www.darlingtonos.org](http://www.darlingtonos.org)  
**On:** 2nd Wednesday of the Month. 7.00pm

**The Devon Orchid Society Contact: Mrs Sue Lane**

Willand Post Office, Willand Old Village, Cullompton, Devon EX15 2RJ  
**Tel:** 01884 32430 **Email:** [sue@laneroger.lorangehome.co.uk](mailto:sue@laneroger.lorangehome.co.uk)  
**Web Site:** [www.devon.ukos.com](http://www.devon.ukos.com)  
**Venue:** Burnham Nurseries, Forches Cross, Newton Abbott, Devon  
**On:** 3rd Sunday of the month (with exceptions)  
1.30 for 2.00pm until 4.00pm

**The Orchid Society of East Anglia** Contact: Mr Colin Thorburn

3 Partridge Walk, Brandon, Suffolk, , IP27 0YF

**Tel:** 01842 810520 **Email :** [colin\\_thorburn@hotmail.com](mailto:colin_thorburn@hotmail.com)

**Web Site:** [www.osea.org.uk](http://www.osea.org.uk)

**Venue:** St Mary's Church Community Room Low Rd, Hellesdon,  
Norwich NR6 5AT

**On:** 3rd Friday each month at 19.30

**East Midlands Orchid Society** Contact: Mrs Kim Pask

Gleakirk, Bathley Lane, Little Carlton, Newark, Notts NG23 6BY

**Tel:** 01636 701311 **Email:** [kim.pask@btinternet.com](mailto:kim.pask@btinternet.com)

**Web Site:** [www.eastmidlandSORCHIDSOCIETY.org](http://www.eastmidlandSORCHIDSOCIETY.org)

**Venue:** Bottesford Village Hall, Bottesford, Nottinghamshire.

**On:** Third Sunday of the month at 1400 to 1630 (No meeting in August)

**Eric Young Orchid Foundation**

Victoria Village, Trinity, Jersey JE3 5HH

**Web Site:** [www.ericyoungorchidfoundation.co.uk](http://www.ericyoungorchidfoundation.co.uk) **Tel:** 01534 861963

**Further Information:** Please phone with reference to opening.

**Essex Orchid Society** Contact: Moira Tarrant

Bumby's, Fox Road, Mashbury, Chelmsford, Essex CM1 4TJ

**Tel:** 01245 231437 **Email:** [moira.tarrant@outlook.com](mailto:moira.tarrant@outlook.com)

**Venue:** Billericay South Green Memorial Hall, Southend Road,  
Billericay CM11 2PR

**On:** 2nd Saturday Monthly at 1.30pm to 4.00pm. Not July, Aug., Dec.

**Fenland Orchid Society** Contact: Mrs Pat Sones

97 Sluice Road, Denver, Downham Market, Norfolk, PE38 0DZ

**Tel:** 01366 388421 **Web Site:** [www.fenland-os.org.uk](http://www.fenland-os.org.uk)

**Venue:** Terrington St. Clement Village Hall, Churchgate Way,  
Terrington St. Clement Nr. Kings Lynn PE34 4LZ

**On:** First Wednesday of each month (Except January), starts at 7.30pm

**Glasgow Botanic Gardens**

**Contact:** Mr Ewen Donaldson, General Manager Glasgow Botanic Gdn,  
730 Great Western Road, Glasgow, G12 0UE

**Tel:** 0141 276 1614 **Email:** [gbg@land.glasgow.gov.uk](mailto:gbg@land.glasgow.gov.uk)

**Web Site:** [www.glasgow.gov.uk/en/residents/parks\\_outdo](http://www.glasgow.gov.uk/en/residents/parks_outdo) Open every day

**The Hardy Orchid Society** Contact: Mrs M Tarrant

Bumby's, Fox Road, Mashbury, Chelmsford CM1 4TJ

**Email:** [moira.tarrant@outlook.com](mailto:moira.tarrant@outlook.com)

**Website:** [www.hardyorchidsociety.org.uk](http://www.hardyorchidsociety.org.uk)

**Further Information:** Contact secretary for details of meetings.

**Harrogate Orchid Society Contact: Dr Richard Collin**

Ceres, Sandhutton, Thirsk, , YO7 4RW

**Tel:** 01845 587478 **Email:** [richard.collin12@btinternet.com](mailto:richard.collin12@btinternet.com)

**Website:** [www.harrogateorchidsociety.co.uk](http://www.harrogateorchidsociety.co.uk)

**Venue:** RHS Garden Harlow Carr Harrogate or Beckwithshaw Village Hall  
See website for dates and times

**Hinckley & District Orchid Society Contact: Keith Bates**

79 Hereford Close, Barwell, Leicestershire LE9 8HU

**Tel:** 01455 446793 **Email:** [orchids1941@yahoo.com](mailto:orchids1941@yahoo.com)

**Website:** <http://hinckleydistrictorchidsociety.com>

**Venue:** Constitutional Club Chapel St., Barwell, Leicestershire

**On:** 1st Weds in the month except July & Aug. Start time 20.00 hrs

**King Charles I School Contact: Mr Philip Seaton**

King Charles I School, Comberton Rd., Kidderminster, Worcs.

**Email:** [philipseaton@gmail.com](mailto:philipseaton@gmail.com)

**Venue:** Kidderminster, Worcestershire

**Lea Valley Orchid Society Contact: Mrs Gillian Radley**

3 Burleigh Road, Hertford, Hertfordshire SG13 7HA

**Tel:** 01992 550897 **Email:** [gillian.radley@yahoo.co.uk](mailto:gillian.radley@yahoo.co.uk)

**Website:** [www.wix.com/leavalleyos/lvos](http://www.wix.com/leavalleyos/lvos)

**Venue:** Waterford Village Hall, Waterford, nr. Hertford,  
A602 - Stevenage to Hertford.

**On:** Third Wednesday of each month at 7.45 pm.

**Lincolnshire Orchid Group Contact: Mr Richard Baxter**

Hall Farm House, Shelton, Newark-on-Trent NG23 5JG

**Tel:** 01949850713 **Email:** [richardandsueb@ineedbroadband.co.uk](mailto:richardandsueb@ineedbroadband.co.uk)

**Website:** [log-on.org.uk](http://log-on.org.uk) **Venue:** Leasingham Village Hall Nr. Sleaford

**On:** 1st Friday of every month (except January) 7.30pm

**Mid Sussex Orchid Society Contact: Dr Maria Firth**

9 Harlands Close, Haywards Heath, West Sussex RH16 1PS

**Tel:** 01444 413626 **Email:** [drmfirmth@gmail.com](mailto:drmfirmth@gmail.com)

**Venue:** Town Hall, 40 Boltro Rd, Haywards Heath,  
West Sussex RH16 1BA

**On:** Second Sunday each month at 2.30pm

**North Bucks Orchid Society Contact: Mrs G Bramham**

25 Leon Avenue, Bletchley, Milton Keynes, Bucks. MK2 2HL

**Tel:** 01908 373880

**Venue:** Rectory Cottages, Church Green Rd, Bletchley MK3 6BJ

**On:** First Wednesday each month at 19.45hrs. No Meeting in August



**North East of England Orchid Society Contact: Pat McLean**

3 Springfield Avenue, Eighton Banks, Gateshead NE9 7HL

**Tel:** 0191 4879515 **Email:** [mcleanpatricia.w@btinternet.com](mailto:mcleanpatricia.w@btinternet.com)

**Website:** [tinyurl.com/NE-of-England-Orchid-Soc](http://tinyurl.com/NE-of-England-Orchid-Soc)

**Venue:** Bowburn Community Centre, Durham Road(A177) DH6 5AT

**On:** Last Tuesday of the Month, 19.00-21.30

**North Hampshire Orchid Society Contact: Mr S Langston**

17 Upper Evingare Road, Whitchurch, Hants, , RG28 7EY

**Tel:** 01256893174

**Email:** [vice.chairman@north-hampshire-orchid-society.org.uk](mailto:vice.chairman@north-hampshire-orchid-society.org.uk)

**Website:** [www.north-hampshire-orchid-society.org.uk](http://www.north-hampshire-orchid-society.org.uk)

**Venue:** East Oakley Village Hall, Hill Rd, East Oakley,  
Basingstoke RG23 7JJ

**On:** Third Sunday at 1400 - 1500 (exceptions, see details on website)

**The North of England Orchid Society Contact: Mr George Barnes**

64, Green Meadows, Westhoughton, Bolton BL5 2BN

**Tel:** 01942 810958 **Email:** [orchidinfo@orchid.org.uk](mailto:orchidinfo@orchid.org.uk)

**Website:** [www.orchid.org.uk](http://www.orchid.org.uk)

**Venue:** Variable, monthly meetings usually on the Saturday of the 2nd weekend of the month. Staging finished by 11.00am, show closes 15.00hrs, For variations consult website or contact us.

**Orchid Society of Great Britain Contact: Mrs Val Micklewright**

103 North Rd, Three Bridges, Crawley, West Sussex RH10 1SQ

**Email:** [val@micklewright.com](mailto:val@micklewright.com)

**Website:** [www.osgb.org.uk](http://www.osgb.org.uk)

**Venue:** Napier Hall, Hide Place, Westminster, London SW1P 4NJ

**On:** On the first Saturday of each month, 13.30 - 16.30,  
13.45 -14.15 Introductory beginners session, 14.40 Guest Speaker

**Orchid Society of Great Britain - Croydon Group**

**Contact:** Mr Michael Penney 43 Meopham Road, Mitcham,  
Surrey CR4 1BH

**Tel:** 020 8648 7295 **Email:** [michael@penneyorchid.fsnet.co.uk](mailto:michael@penneyorchid.fsnet.co.uk)

**Venue:** Wallington Reformed Church, Stanley Park Road, Wallington,  
Surrey, SM6 0EU

**On:** 1st Tuesday Monthly at 19.30 NO MEETINGS in January

**Pleurothallid Alliance - UK Contact: Mr D Smallman**

10 Willoughby Close, Helpringham, Sleaford NG34 0RX

**Tel:** 01529 421521

**Email:** [donaldsmallman234@btinternet.com](mailto:donaldsmallman234@btinternet.com)

**Website:** [www.pleurouk.co.uk](http://www.pleurouk.co.uk)

**Venue:** Wilnecote Parish Hall, Watling Street, Two Gates, Staffs B77 5AD

**On:** 20<sup>th</sup> Sept 10.00am - 4.00pm Contact Secretary for meeting details.



## Join the Orchid Society of Great Britain

Being a member of the Orchid Society of Great Britain opens the door to a world of orchid opportunities. Attend our friendly monthly meetings where you'll find orchids from around the world on display and for sale, lectures and cultural advice. Exhibit in local RHS and international shows or travel to see orchids in their natural habitat. Sit back and immerse yourself in our internationally acclaimed quarterly orchid magazine or a book from our comprehensive library. Meetings take place on the first Saturday afternoon of every month at Napier Hall, Hide Place, Westminster, London SW1P 4NJ.

For more information, visit our website

**[www.osgb.org.uk](http://www.osgb.org.uk)**

or contact our Membership Secretary

**[osgbmembership@yahoo.co.uk](mailto:osgbmembership@yahoo.co.uk)**



**Royal Botanic Gardens KEW Contact: Christopher Ryan,**  
Tropical Nursery, RBG Kew, Richmond, Surrey, TW9 3AB  
**Tel:** 020 8332 5518 **Email:** [c.ryan@kew.org](mailto:c.ryan@kew.org)  
**Website:** [www.kew.org](http://www.kew.org) Open all year, see website for opening times  
**Further Information:** Email or phone for reserve collection visits.

**Royal Horticultural Society Orchid Committee Contact: Jill Otway**  
RHS Orchid Committee, Horticultural Halls, Vincent Sq., London  
Committee Secretary, [jillotway@rhs.org.uk](mailto:jillotway@rhs.org.uk)  
**On:** See Diary of Events, Page 26.  
**Venue:** RHS Orchid Committee meets at most RHS flower shows, the Chelsea Flower Show, selected society shows and BOC Congress.

**Scottish Orchid Society Contact: Mr Alan MacKenzie (General Secretary)**  
7 Dunlin Crescent, Houston, Johnstone, Renfrewshire PA6 7JX  
**Tel:** 01505 614756  
**Email:** [gen.secretary@scottishorchid.info](mailto:gen.secretary@scottishorchid.info)  
**Website:** [www.scottishorchid.org](http://www.scottishorchid.org)

**Scottish Orchid Society EDINBURGH Contact: Miss Naomi Norman**  
41 Hawthorn Road, Galashiels, TD1 2LR  
**Tel:** 07570 575867 **Email:** [naominorm@bigpond.com](mailto:naominorm@bigpond.com)  
**Website:** [www.scottishorchid.org](http://www.scottishorchid.org)  
**Venue:** Toby Carvery, 41 Howden Hall Road, Edinburgh, EH16 6PG  
**On:** Last Wednesday monthly at 19.30,  
NO MEETINGS in July or August

**Scottish Orchid Society GLASGOW Contact: Mr Alan MacKenzie**  
7 Dunlin Crescent, Houston, Johnstone, Renfrewshire PA6 7JX  
**Tel:** 01505 614756 **Email:** [gen.secretary@scottishorchid.info](mailto:gen.secretary@scottishorchid.info)  
**Website:** [www.scottishorchid.org](http://www.scottishorchid.org)  
**Venue:** Hopkirk building, Glasgow Botanic Gardens, Glasgow  
**On:** 3rd Monday Monthly at 19.30 NO MEETINGS June, July, or Aug.

**Scottish Orchid Society PERTH Contact: Mr Brian Brocklehurst**  
146 Balgillo Road, Broughty Ferry, Dundee DD5 3EB  
**Tel:** 01382 778348 **Email:** [brian.brocklehurst1@btinternet.com](mailto:brian.brocklehurst1@btinternet.com)  
**Website:** [www.scottishorchid.org](http://www.scottishorchid.org)  
**Venue:** Village Hall, Pitcairngreen, Nrth Perth PH1 3LR  
**On:** 4th Wednesday Monthly Jan., Feb., March & November at 1.30pm,  
Apr., May, Aug., Sept., & Oct. at 7.30pm.  
No meetings June, July & Dec.

**Scottish Country Members Contact: Mr Colin Avery**  
Dunjop Brae, Bridge of Dee, Castle Douglas DG7 2AE  
**Tel:** 01556 680452 **Website:** [www.scottishorchid.org](http://www.scottishorchid.org)  
**Email:** [colin.avery1999@btinternet.com](mailto:colin.avery1999@btinternet.com)

**The Sheffield & District Orchid Society** Contact: Mrs Carolyn McQueen

3 Milton Court, Swinton, Rotherham, S64 8RE

**Tel:** 01709 587208 **Email:** [carolyn.m.mcqueen@gmail.com](mailto:carolyn.m.mcqueen@gmail.com)

**Website:** [www.sheffieldorchids.org](http://www.sheffieldorchids.org)

**Venue:** Ranmoor Parish Centre, Ranmoor Park Road, Sheffield S10 3GX

**On:** Usually Second Sunday of each month, 10.00am to 12.30pm

**Solihull and District Orchid Society** Contact: Mr Malcolm Moodie

16 Old Glebe, Tadmerton, Banbury, Oxfordshire OX15 5TH

**Tel:** 01295 788159 **Email:** [LaeliaM@aol.com](mailto:LaeliaM@aol.com)

**Website:** [www.solihullorchidsociety.org](http://www.solihullorchidsociety.org)

**Venue:** St George and Teresa Parish Centre, Dorridge, B93 8EZ

**On:** First Saturday of the Month open 1.00pm. Speaker 2.30pm  
No August meeting.

**Somerset, Wiltshire & Dorset Orchid Society** Contact: Mr Geoff Hobson

30 Leigh Road, Westbury, BA13 3QL

**Tel:** 01373823820 **Email:** [m5eay.geoff@btinternet.com](mailto:m5eay.geoff@btinternet.com)

**Website:** [swdos.webeden.co.uk](http://swdos.webeden.co.uk)

**Venue:** Pen Selwood Village Hall, Wincanton, Somerset

**On:** 1st Sunday of each month at 14.30hrs. Visitors welcome, £2 charge

**South East Orchid Society** Contact: Mrs Karina Sellers

Wildwood, Knoll Hill, Aldington, Kent TN25 7BZ

**Tel:** 01233 720238

**Email:** [karinasellers@btinternet.com](mailto:karinasellers@btinternet.com)

**Website:** [www.southeastorchidsocietyuk.org](http://www.southeastorchidsocietyuk.org)

**Venue:** Ashford Rail Staff Hall, Beaver Road, Ashford, Kent. TN23 7RR

**On:** Generally the last Sunday in the month from 2:30pm. Go to the Website for full information.

**South Wales Orchid Study Group** Contact: Mrs Lynne Harrendence

Preswylfa, Milo, Llandybie, Llanarthey, Ammanford,  
Carmarthenshire SA18 3NX

**Tel:** 01269 269847 **Email:** [lynne.harrendence@resqnet.co.uk](mailto:lynne.harrendence@resqnet.co.uk)

**Website:** [www.orchidstudygroup.org.uk](http://www.orchidstudygroup.org.uk)

**Venue:** National Botanic Garden of Wales

**On:** Saturday, once a month 11.00am to 1.00pm.

Check website for details.

**The South West Orchid Society** Contact: Mrs Marian Saunders

105 Wembdon Hill, Wembdon, Bridgwater, Somerset TA6 7QB

**Tel:** 01278 - 455170 **Email:** [msaunders1@mail105.co.uk](mailto:msaunders1@mail105.co.uk)

**Venue:** West Monkton Village Hall, Monkton Heathfield, Near,  
Taunton TA2 8NE

**On:** 2nd Sunday of the month 2:30 to 5:00 pm

**Southern Counties Orchid Society Contact: Mr Peter Mottershead**

33 Kingston Lane, Southwick, Brighton, East Sussex BN42 4SJ

**Tel:** 01273 597921 **Email:** [pp.mottershead@ntlworld.com](mailto:pp.mottershead@ntlworld.com)

**Website:** [www.SouthernCountiesOrchidSociety.com](http://www.SouthernCountiesOrchidSociety.com)

**Venue:** Lancing Leisure Centre, Brighton Rd. (A27) Lancing, West Sussex

**On:** Second Wednesday each month at 19.30

**Suffolk Orchid Society Contact: Mrs Jenny Gage**

Honeysuckle Cottage, Church Lane, Aldham, Suffolk IP7 6NP

**Tel:** 01473 822569

**Email:** [roystongage@btinternet.com](mailto:roystongage@btinternet.com) **Website:** <http://suffolkorchid.co.uk>

**Venue:** St Michaels Church Centre, The Drift, Martlesham,

Nr Ipswich, IP5 3UY

**On:** Last Wed. of month (not Dec, July, or Aug.) 7.30pm - 9.45pm

**Sussex Orchid Group Contact: Mrs Val Micklewright**

103 North Road, Three Bridges, Crawley, West Sussex RH10 1SQ

**Email:** [val@micklewright.com](mailto:val@micklewright.com)

**Venue:** Crawley Horticultural Hall, Ifield Ave., Crawley, RH11 7AJ

**On:** 3rd Sunday in the month at 2.30. (May and June, no meetings)

**Thames Valley Orchid Society Contact: Mr Barry Cook**

1 Fontwell Drive, Reading, Berkshire RG30 4QR

**Tel:** 0118 958 0448 **Email:** [barrycookdesign@talktalk.net](mailto:barrycookdesign@talktalk.net)

**Venue:** St. Peters Church Hall, St. Peters Street, Marlow SL7 1NQ

**On:** Generally 3rd. Friday each month 8.00pm start.

**Wessex Orchid Society Contact: Dr Grahame Coleman**

13 Glen Eyre Drive, Bassett, Southampton SO16 3NQ

**Tel:** 02380760509 **Email:** [lazybones36@hotmail.co.uk](mailto:lazybones36@hotmail.co.uk)

**Website:** [wessexorchidsociety.org.uk](http://wessexorchidsociety.org.uk)

**Venue:** Shawford Village Hall, nr Winchester

**On:** Second Sat. of month (except March & Aug), 2.00 for 2.30 p.m.

**West Cornwall Orchid Society Contact: Mrs Kit Lindsay**

St Martins Villa, 13 Pendarves Rd, Camborne, Cornwall TR14 7QB

**Tel:** 01209 717947 **Email:** [r.lindsay672@btinternet.com](mailto:r.lindsay672@btinternet.com)

**Website:** [www.westcornwallorchidsociety.btck.co.uk](http://www.westcornwallorchidsociety.btck.co.uk)

**Venue:** Camborne Community Centre, Pendarves Rd, Camborne

**On:** 2nd Sunday of month at 2.00pm except August and December

**Writhlington School Orchid Project Contact: Mr Simon Pugh-Jones MBE**

6 Park Hill Drive, Frome, Somerset BA11 2LE

**Tel:** 01373 466736 **Email:** [spugh-jones@tiscali.co.uk](mailto:spugh-jones@tiscali.co.uk)

**Website:** <http://wsbeorchids.org>

**York and District Orchid Society Contact: Mr Duncan Kaye**

Pamandus,, West Lane,, Burn, Selby, YO8 8LR

**Tel:** 01757 270825 **Email:**

**Venue:** Reading Rooms, Dunnington, York

**On:** Second Sunday each month 10am to 12.30pm



## National Collections of Orchids

Plant Heritage (The National Council for the Conservation of Plants & Gardens)  
recognise the following National Collections.

***Catasetineae, Cyrtopodium*** Max Hopkinson  
5 Golf Road, Radcliffe-on-Trent, Nottingham NG12 2GA  
Tel: 0115 912 3095 Email: [maxhoppycat@aol.com](mailto:maxhoppycat@aol.com)

***Cattleya spp. & Guarianthe*** Mike Armstrong  
Auld Reekie, 25 Church Lane, Muston, Notts NG13 0FD  
Tel: 01949 842668 Email: [mikandra@tiscali.co.uk](mailto:mikandra@tiscali.co.uk)

***Dendrobium*** The Curator, Glasgow Botanic Garden, Glasgow  
G12 0UE Scotland. Tel: 0141 334 2422 Fax: 0141 339 6964  
Email: [gbg@land.glasgow.gov.uk](mailto:gbg@land.glasgow.gov.uk)

***Gongora*** Drs Gary and Maria Firth  
9 Harlands Close, Haywards Heath West Sussex RH16 1PS  
Open by appointment [garyfirth@uwclub.net](mailto:garyfirth@uwclub.net) No of spp: 31

***Maxillaria spp.*** Dr M McIlmurray  
Pooh's Corner, 84 Redehall Road, Smallfield, Surrey RH6 9RS  
Tel: 01342 842934 Email: [michael.mcillmurray@btinternet.com](mailto:michael.mcillmurray@btinternet.com)

***Phragmipedium spp. including Mexipedium*** Arthur L Deakin  
Pomarium Cottage, Back Lane, Halam, Nottingham NG22 8AG  
Tel: 01636 819974 Email: [arthurlomasdeakin@yahoo.co.uk](mailto:arthurlomasdeakin@yahoo.co.uk)

***Pleurothallidinae spp.*** Steve & Frances Manning  
New Estover, 4, The Cedars, Nantwich, CW5 5GZ  
Tel: 01270 618400 Email: [orchidsmann@uwclub.net](mailto:orchidsmann@uwclub.net)  
**Note:** Part of this Collection is held at Chester Zoo.  
**Contact:** Phil Esseen, Upton-by-Chester CH2 1LH  
Tel: 01244 650236 Fax: 01244 371273 [p.esseen@chesterzoo.org](mailto:p.esseen@chesterzoo.org)  
[www.chesterzoo.org](http://www.chesterzoo.org)

***Stanhopea*** R J Hartley, Foxdale, Mill Lane,  
Wetley Rocks, Stoke-on-Trent, Staffordshire ST9 0BN  
Tel: 01782 550313 Fax: 01782 550 845  
Email: [orchidhartley@bigfoot.com](mailto:orchidhartley@bigfoot.com)  
Web Site: [www.geocities.com/foxdaleorchidsuk](http://www.geocities.com/foxdaleorchidsuk)

Further details are available from -  
NCCPG, 12, Home Farm, Loseley Park, Guilford, Surrey GU3 1HS.  
Tel: 01483 447540 Website: [www.nccpg.com](http://www.nccpg.com)  
Email: [info@nccpg.org.uk](mailto:info@nccpg.org.uk)

## BOC Photographic Competition (continued)



**3rd** *Dactylorhiza cordigera*  
*subsp. bosniaca*  
Sam Hurley, the OSGB.



**4th** *Dactylorhiza maculata* Alan Parfitt  
HOS Hardy Orchid Society



**5<sup>th</sup>** BLC Bryce Canyon 'Splendiferous'  
Ken Johnson, Solihull OS



**6<sup>th</sup>(joint)** *Ophrys speculum*  
David Arkley, Darlington OS



6<sup>th</sup> (joint) *Dendrobium Nagomi*  
Chris Barker North East OS



8<sup>th</sup> *Paph. tranlienianum* Chris  
Barker North East OS



9<sup>th</sup> *Paphiopedilum sukhakulii*  
John Rigby Central OS



10<sup>th</sup> *Coelogyne ovalis*  
Len Gray, Darlington OS



# Lea Valley Orchid Show

**Saturday 21<sup>st</sup> May 2016**  
**10am to 400pm**

**Ware Drill Hall, Ware**  
**Hertfordshire SG12 9HP**

*Your opportunity to see and buy rare  
orchids from Burnham Nurseries,  
Orchid Alchemy, Royden Orchids.  
Orchid displays to be seen and  
fabulous cakes to be eaten.*

Easy Parking, 2 mins walk from Ware Train  
Station (easy access from London)

For more information visit  
**[www.leavalleyorchidsociety.com](http://www.leavalleyorchidsociety.com)**  
**Tel: 01992 550897**



**Roellke Orchideenzucht GbR**



*Didn't find what you were looking for?*

Visit our Webshop

**[WWW.ROELLKE-ORCHIDEEN.DE](http://WWW.ROELLKE-ORCHIDEEN.DE)**



**Shipping to the UK**

SHIPPING COSTS VARY

**OR**

Pre-order for our next show in the UK

We will be at the

**London Show, Malvern Show & the BOC Congress**

NO SHIPPING COSTS



**Huge variety of orchids**

**All sundries you need**

Don't hesitate to contact us!



**[info@roellke-orchideen.de](mailto:info@roellke-orchideen.de)**



**+49 5207 920539**

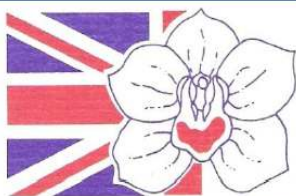


**Flößweg 11 33758 Schloß**

**Holte - Stukenbrock Germany**







# The British Orchid Growers Association

B · O · G · A

You know you can buy quality orchid plants and sundries and receive knowledgeable advice from the members of the British Orchid Growers Association.

Visit [www.boga.org.uk](http://www.boga.org.uk) for full members' details and our programme of events.



/britishorchidgrowers



@BOGA\_Orchids

## Current Members:

### A.J. KEELING & SONS

01274 682120 [johnkeeling@tiscali.co.uk](mailto:johnkeeling@tiscali.co.uk)

### BURNHAM NURSERIES LTD & ORCHID PARADISE

01626 352233 [www.orchids.uk.com](http://www.orchids.uk.com) [mail@orchids.uk.com](mailto:mail@orchids.uk.com)

### EQUATORIAL PLANT COMPANY

01833 908127

[equatorial9@gmail.com](mailto:equatorial9@gmail.com)

[www.equatorialplants.com](http://www.equatorialplants.com)

### JUST IN GLASS

07910 245690 [andy@justinglass.co.uk](mailto:andy@justinglass.co.uk)

### LANESIDE HARDY ORCHID NURSERY

01995 605537 [jcrhutch@aol.com](mailto:jcrhutch@aol.com) [www.lanesidehardyorchids.com](http://www.lanesidehardyorchids.com)

### ORCHID ALCHEMY

07864 919935 [andrew@orchidalchemy.co.uk](mailto:andrew@orchidalchemy.co.uk) [www.OrchidAlchemy.com](http://www.OrchidAlchemy.com)

### PHOENIX ORCHIDS

01422 362509

### RAY CREEK ORCHIDS

01724 798445 [raysinorchids@btinternet.com](mailto:raysinorchids@btinternet.com) [www.raycreekorchids.com](http://www.raycreekorchids.com)

### ROYDEN ORCHIDS

01494 863224 [royden.orchids@gmail.com](mailto:royden.orchids@gmail.com)







# The British Orchid Growers Association

B · O · G · A

Our 2 Orchid Events for 2016...

## SUMMER ORCHID FAIR 2016

**SATURDAY 20<sup>TH</sup> AUGUST 10am - 4.30pm**

**SUNDAY 21<sup>ST</sup> AUGUST 10am - 4.00pm**

**COLE COURT -**

**TWICKENHAM & DISTRICT MASONIC CENTRE**

**150 London Road, Twickenham TW1 1HD.**

## PRE-CHRISTMAS ORCHID FAIR!

**SATURDAY 19<sup>TH</sup> NOVEMBER 2016**

**11am - 3.30pm**

**Hosted by the Solihull Orchid Society, venue TBC**



[www.boga.org.uk](http://www.boga.org.uk)



[/britishorchidgrowers](https://www.facebook.com/britishorchidgrowers)



[@BOGA\\_Orchids](https://twitter.com/BOGA_Orchids)



# Now you can keep orchids automatically

The biOrbAIR is an automated terrarium that offers hassle-free plant care. You can fill it with hard-to-maintain exotic plants and the sealed environment takes care of the rest: lighting, humidity, watering and air circulation.

## IT NEEDS NO DAYLIGHT

Your plants are provided with all the light they need to grow on an automatic timer. They won't need any daylight, so you can place the biOrbAIR anywhere in your home.

## HUMIDITY IS AUTOMATICALLY CONTROLLED

The biOrbAIR senses when the humidity drops and gently mists your plants when needed to keep them perfectly hydrated.

## EASY TO SET UP AND OWN

The biOrbAIR is simple to set up and is virtually maintenance free. Once established, your plants will

flourish. When the water reservoir gets low, your biOrbAIR will remind you to top it up by gently dimming its lights.



## 100% GUARANTEED


All the working parts in your biOrbAIR are backed by a 12 month guarantee.

## TECHNOLOGY THAT GETS YOU CLOSER TO NATURE


Being closer to nature can improve your mood and alleviate stress. While most technology removes you from the natural world, the biOrbAIR gets you closer to nature. You really can experience the beauty of nature every day, in your home.

Visit [www.biorbair.com](http://www.biorbair.com) or buy online at [www.reef-one.com](http://www.reef-one.com)

biOrbAIR automatic terrarium available in grey or white. 560mm tall. 500mm diameter.



Natural daylight is not needed.



Plants are gently misted from above.

*"a miniature Eden Project for a touch of the great outdoors"*  
Daily Express

biOrb® air

Visit [www.biorbair.com](http://www.biorbair.com) or buy online at [www.reef-one.com](http://www.reef-one.com)

# Ray Creek (Orchids)



Always lots of quality orchids in stock: -Young Plants  
- Flowering sized - species - hybrids - Gift Orchids

Try my Chopped Coconut Husk Growing Medium.

It's getting very popular

Happy to attend shows or present talks in most areas

Ray Creek (Orchids) 7 Jacklin Lane, Luddington, Scunthorpe,  
DN17 4RB 01724 798445 email raysinorchids@btinternet.com  
website raycreekorchids.com See me on facebook

## Orchid Supplies UK

Meeting Orchid Growers Needs

[www.orchidsupplies.co.uk](http://www.orchidsupplies.co.uk)

Come to Orchid Supplies UK for all your  
Orchid growing products and a friendly  
personal service when you need it.

- ◆ Highest quality orchid products
- ◆ NEW Online shop
- ◆ Quick Communication
- ◆ Safe & Fast delivery
- ◆ Akerne's Rain Mix
- ◆ No order too small
- ◆ 5% discount with coupon code 0505
- ◆ Email: [info@orchidsupplies.co.uk](mailto:info@orchidsupplies.co.uk)

## TATTON PARK ORCHID SHOW

Free  
Entry

Knutsford, Cheshire

5<sup>th</sup> June 2016

LARGEST ORCHID EVENT

IN THE NORTH WEST

Many British Orchid Growers  
Association traders and others  
to buy from.

### Stunning Society Displays

Set in the historic Tennants Hall of a  
Stately Mansion House with  
children's play area, restaurant,  
formal gardens and deer park.

The North of England Orchid Society  
invite you to a great day out for all.

Car parking & other charges may apply.

<http://orchid.org.uk/tatton>



## In-Charm Orchid Laboratory



Owner Yuan-Chuan Hsiao is a leading Taiwanese *Paphiopedilum* grower and hybridiser .

**Address:** No.61 Yashow 5th Rd.,  
Showshan, Daya, Taichung,  
**Taiwan 428, R.O.C.**

**Mobile:** +886 932 977378

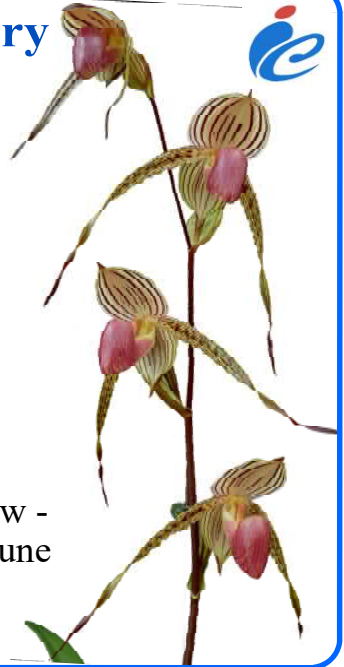
**Fax:** +886-4-25654988

**Email:** incharm@ms6.hinet.net

**Web:** www.incharmorchids.com

We hope to see you at the following show -  
Malvern International Orchid Show in June

**We will be pleased to receive your  
pre-orders for this show.**



## **Chantelle Orchids (UK)** **& Hsiang Yu Orchids (Taiwan)**

**8, Hob Lane, Burton Green,  
Warwickshire CV8 1QB**

**02477040337 or 07510309646**

**[chantelle.shih@chantelle-orchids.com](mailto:chantelle.shih@chantelle-orchids.com)**

**[www.chantelle-orchids.com](http://www.chantelle-orchids.com)**

**We provide a range of species, hybrids &  
miniatures including cattleyas, encyclias,  
neofinetias, dendrobiums, angraecums,  
epidendrums, etc.**

**Please visit our website for a list of available plants &  
shows that we will be attending.**

**We also take mail orders.**

**We look forward to seeing you at Malvern in June and  
the BOC Congress in November.**

# RHS London Orchid Show and Spring Plant Fair



**1 – 2 April 2016**  
**10am – 5pm**

**Exclusive Preview Evening**  
**31 March, 6.30 – 8.30pm**

*'Phalaenopsis OX Honey Hybrid'*



Royal  
Horticultural  
Society

Sharing the best in Gardening

**Royal Horticultural Halls**

📍 St James's Park ➡ London Victoria

**[rhs.org.uk/londonshows](https://rhs.org.uk/londonshows)**

RHS Registered Charity No: 222879/SC038262





# The 6<sup>th</sup> Durham Orchid Show

Sunday 4<sup>th</sup> September 2016 10.00am - 4.00pm

Josephine Butler College, Durham City DH1 3DF

Stunning displays by Orchid Societies and sales from leading orchid nurseries.

**The North East's biggest Orchid Show**

**There is ample free parking near to the College**

**Make a day of it and visit**

the Botanic Garden,  
the Oriental Museum,  
the Cathedral,  
the Castle,  
etc.



**Admission to  
the Show  
is Free!**

For more information contact: Chris Barker - [cjbandjb@ntlworld.com](mailto:cjbandjb@ntlworld.com)



## Burnham Nurseries

### ORCHID PARADISE

*The UK's premier orchid nursery, we are a unique, family business with 20 RHS Chelsea Gold Medals. 100s of beautiful orchids in flower all year round.*

• **Visit our new and improved website and online shop! [www.orchids.uk.com](http://www.orchids.uk.com)**

• **Many unusual species & popular hybrids from seedlings to specimens.**

• **Mail order a speciality. Ask for our brochure.**

• **Free email newsletter.**

• **Orchid Masterclass courses.**

• **Visit our 'Orchid Paradise' Open 7 days.**

• **Papazulu's Coffee Shop refreshments & gifts.**



See us at the BOC Congress in  
Norwich 5-6 Nov, check our website  
for the full list of shows we attend

Forches Cross, Newton Abbot, Devon, TQ12 6PZ

Tel: 01626 352233 [www.orchids.uk.com](http://www.orchids.uk.com)

Follow us @burnhamorchids



Ready to use  
straight from the bag

Consistent  
rewetting & drying

Beneficial  
micro-organisms

Hard structure  
for long life

Consistent size

Holds and releases  
water & nutrients

Stable  
• pH 5.5-6.5 • EC <0.3

## naturally balanced for consistently superior growth

Orchiata, the scientifically aged bark, provides a healthy, balanced environment, superior nutrient delivery, plus long-lasting value. Report with Orchiata and realise your orchid's full potential.

Peter White  
Orchid Accessories  
P: +44 1295 712159  
E: [sales@orchidaccessories.co.uk](mailto:sales@orchidaccessories.co.uk)  
W: [www.orchidaccessories.co.uk](http://www.orchidaccessories.co.uk)



Product of New Zealand

**Orchiata™**  
**besgrow**  
At the root of healthier plants.  
[www.besgrow.com](http://www.besgrow.com)

CELEBRATING 25 YEARS  
**25**  
OF SUPERIOR GROWTH





**Orchidweb.com**

**Unique species + hybrids of many genera**



**We ship to countries within the EU twice per year.**

**Contact us for details**

**Orchidweb.com**

**email: [orchids@orchidweb.com](mailto:orchids@orchidweb.com)**