

# **The British Orchid Council Year Book 2021**



Winner of the 2019 BOC Photographic Competition

## **A Guide for Orchid Enthusiasts**

# The British Orchid Council

Registered Charity 1002945

Mr Max Hopkinson

**President**

Email: [maxhoppycat@aol.com](mailto:maxhoppycat@aol.com)

**Chairman**

Dr Helen Millner

Email: [chairman@british-orchid-council.info](mailto:chairman@british-orchid-council.info)

**Vice Chairman**

To be appointed

**Hon. Secretary**

John Rigby and Tricia King jointly

Email: [secretary@british-orchid-council.info](mailto:secretary@british-orchid-council.info)

**Hon. Treasurer**

Tjin Ong

Email: [treasurer@british-orchid-council.info](mailto:treasurer@british-orchid-council.info)

**Minutes Secretary**

Sam Bridge

Email: [minutes-secretary@british-orchid-council.info](mailto:minutes-secretary@british-orchid-council.info)

## Handbook Contents

- 3 - 4 About the BOC
- 10 Orchids as Houseplants
- 11 Pests and diseases
- 17 - 19 British Orchid Nurseries
- 20 - 23 Diary of Events, Judging Symposiums and RHS Orchid Committee meetings
- 25 - 31 Members of the BOC
- 32 National Collections of Orchids

**\* \* \* Please Note \* \* \***

Information in this edition of the Yearbook will probably be affected as the situation develops with the Covid-19 virus pandemic.



Visit us at [www.facebook.com/BritishOrchidCouncil](https://www.facebook.com/BritishOrchidCouncil)

Editors: Chris Barker. Email: [cjbandjb@ntlworld.com](mailto:cjbandjb@ntlworld.com)

& Iain Wright. Email: [iaincwright@windmill.me.uk](mailto:iaincwright@windmill.me.uk)

**\* \* \* Front cover \* \* \***

**Pleione Sabatini** by Derek Armstrong of Darlington & District Orchid Society. Winner of the **2019 BOC Photographic Competition**. This and the other entries appear in this edition.

## Chairman's Introduction

“Orchid societies are now facing their most difficult times.....”

That was a statement I made when I became BOC chair in March 2020 - little did I or any of us know what the year was about to bring. All the major orchid shows were cancelled in 2020 and both the Malvern Show and Southport Congress for 2021 have now also been cancelled. We have been unable to hold or attend society shows and meet up with orchid friends. So, what did we achieve in 2020?

- ◆ We took to Zoom to communicate and keep in touch with friends.
- ◆ Many, who preferred not to use Zoom, used the telephone and rang each other up!
- ◆ Societies held meetings over Zoom and speakers learnt how to use it for presentations
- ◆ BOC held the first ever virtual Congress - there were 85 entrants and over 800 photographs in the orchid judging section!
- ◆ The annual photographic competition was live online; entries closed on the 31<sup>st</sup> Dec.
- ◆ The Speaker list has been updated to show speakers who give internet presentations
- ◆ The BOC newsletter now goes out regularly with news and articles of interest for members and member societies to stay up to date.
- ◆ Many societies are now sending out newsletters more frequently and they are high quality - good places to share news and post pictures
- ◆ Our BOC Facebook group is still going and many of you have now joined.

But what does the future hold in store? As if Covid-19 were not enough, the other cloud is the uncertain effect that Brexit will have on trade and availability of orchids plants. One of the major BOC initiatives will be identifying where work is currently being done in orchid propagation in the UK and where valuable and interesting orchid collections are being kept. There will be more news about this in the first part of next year. Watch this space!!

Last year BOC started looking at Health and Safety issues related to orchid shows, in order to offer support and advice to societies. When shows are eventually held again this will be of paramount importance. Expect to hear more about this later in the year, if and when, shows start happening again.

After the success of the Covid-19 virtual conference last year (see 3 above), depending on events between now and May/June we will be organising another event in 2021. Not exactly the same as last time, but we would like it to be fun for everyone.

Who knows what 2021 will bring, but with some effort, ingenuity, adaptability, and the will to keep societies going, orchid growing in the UK will continue. The face of orchid growing as we have known it may change, with members moving to growing on windowsills and in terrariums, as heated greenhouses become more prohibitively expensive. The interest is out there – you only have to look on the web to realise just how many people are still interested in orchids.

**Helen Millner, Chair British Orchid Council**

## About The British Orchid Council

The Council is a registered charity, whose main objectives are promoting knowledge of orchids and encouraging excellence in their culture. We achieve this as follows.

BOC funds annual international speaker tours.

We aim to organise a Congress for members every other year.

We run a judging scheme with regular training events for judges and trainees. Our judges' qualification is recognised around the world.

We maintain a list of speakers, diary of events, lists of societies, trade contacts and judges, plus cultural advice-for popular classes of orchid.

Our annual photographic competition is organised for members.

We provide a website and database for our members and the public.

Our website and the yearbook both provide publicity for each society.

We offer bargain tickets for the Malvern International Orchid Show to members.

We provide up to fifty Yearbooks free to member societies.

We are developing a slide/digital presentation library for our member societies use.

We represent our members on both European and International bodies.

See the BOC website at [www.british-orchid-council.info](http://www.british-orchid-council.info) and visit the Services section.

You will find updates during the year in the -

Diary of Events, Contact Details, List of Members, Orchid Nurseries and Suppliers.

### Expect changes!

**You will find that most of the Nurseries and Suppliers are providing excellent online shopping opportunities while you are missing the seeing them at shows.**



**BOC Photographic Competition 2nd Place. *Bulbophyllum bicolor* by Stanley Taylor from the Solihull & District Orchid Society**

## **Please Note.**

All information in this edition of the Yearbook will probably be affected by the Covid-19 virus pandemic, and on a successful roll-out of the vaccination plan. Please do not take anything for granted. Events may be cancelled, but hopefully as the year progresses, new events will be organised. You are advised to check with the Diary of Events on the BOC website, or visit the website of the organising society before setting out to visit any orchid event . This information will be updated as the year progresses.

**Please will BOC societies and organisations make sure that they enter any new information into their society section as soon as they know of any changes.**



**BOC Photographic Competition 3rd Place.** *Oncidium eliae* by Stanley Taylor from the Solihull & District Orchid Society



# RHS Garden Hyde Hall Spring and Orchid Show

9<sup>th</sup> - 11<sup>th</sup> April 2021 10.00am - 4.00pm

Join us as we kick-off our 2021 show season celebrating early-flowering plants alongside orchids from around the world; held for the first time at RHS Garden, Hyde Hall, Creep hedge Lane, Chelmsford CM3 8ET

---



## A look back at the 2019 show

Displays and exhibits were themed around resourcefulness, sustainability and our relationship with plants. Gardening in urban environments was a key focus of the show; from houseplants to balcony gardening and growing your own fruit and veg.



## Practical masterclasses

Creative sessions gave people hands-on experience including:

- ◆ Learning how to make dried flower bouquets
- ◆ Trying their hand at botanical life drawing
- ◆ Taking a masterclass in terrarium gardening
- ◆ Decorating cupcakes ‘succulent-style’

The Spring Launch and Orchid Show was previously held at the Royal Horticultural Halls in central London. After the event was cancelled in 2020, it moved to RHS Garden Hyde Hall in Essex for the start of the 2021 season.



## Wealth of expertise

Growers from across the UK and Europe exhibited their finest spring interest plants to inject colour in our winter-weary borders and pots as well as bringing nature into our homes with flowering and foliage houseplants.

Visitors enjoyed a wide variety of rare and exotic orchid species on display with many available to buy. Specialist growers were on hand to offer all the advice needed to successfully grow orchid blooms.





# Elite Orchids

*Paphiopedilums, Phragmipediums  
& Bulbophyllums For Sale*

Order Online

[www.eliteorchids.co.uk](http://www.eliteorchids.co.uk)

[info@eliteorchids.co.uk](mailto:info@eliteorchids.co.uk)



## Spicesotic plants

## Tropical plants and orchids online

*Wide range of orchids and tropical plants online*

[www.spicesoticplants.co.uk](http://www.spicesoticplants.co.uk)

[stores.ebay.co.uk/spicesotic-plants](http://stores.ebay.co.uk/spicesotic-plants)

[spicesoticplants@hotmail.com](mailto:spicesoticplants@hotmail.com)

tel:07875035181

 [www.facebook.com/Spicesoticplants](https://www.facebook.com/Spicesoticplants)



**BOC Photographic Competition 13th Place.** *Paphiopedilum* Clare de Lune 'Edgard van Belle' from Ken Johnson, the Solihull & District Orchid Society



**BOC Photographic Competition 10th Place.** *Paphiopedilum* (Coco Bell x Psyche) by Lina Smalinske, the Solihull & District Orchid Society





# Bournemouth Orchid Fair and Show

**Saturday February 27th 2021**

**12.00 Noon – 4.30 pm**

Entrance fee **STILL** held at **£3.00** per person

Children Under 18 enter **FREE** with paying adult

- **FREE** Childrens Orchid activities  
(See our Facebook page for more details)

- Exquisite and intriguing orchids on display

- Refreshments available at cost

- **FREE** high quality cultural advice and orchid clinic

- Substantial variety of orchids and other quality items for sale

- **FREE** potting demonstrations - bring along your plants for **FREE** advice

- **REPOTTING SERVICE** from £1.50

- **Trade attractions** Burnham Nurseries,  
Laurence Hobbs Orchids,  
Steve Neville Bespoke Studio Ceramics.

- Educational materials and exhibitions

## **Show Venue:**

**Allendale Community Centre  
Hanham Road,  
Wimborne,  
Dorset, BH21 1AS**

Contact: **Chris Broomfield**, Show Manager,  
on 07712 479 056 or [chrisbroomfield@ntlworld.com](mailto:chrisbroomfield@ntlworld.com)

Visit our website

[www.bournemouthorchidsociety.org.uk](http://www.bournemouthorchidsociety.org.uk)

**All activities will be subject to Covid 19 restrictions  
in place at the time of the show.**



## **Orchids as Houseplants**

The types of orchids that we grow in our greenhouses, conservatories or in the home would naturally grow in rainforests all over the world. We try to recreate these conditions to get the best from our plants and this need not be as hard as you think!

**TEMPERATURE:** Orchids usually fall into 1 of 3 categories - **cool, intermediate or warm** - here is a guide to the temperatures:

<b>Cool:</b>	winter minimum 10°C (50°F)	summer maximum 22°C (75°F)
<b>Intermediate:</b>	winter minimum 12°C (55°F)	summer maximum 25°C (80°F)
<b>Warm:</b>	winter minimum 18°C (65°F)	summer maximum 27°C (85°F)

The winter minimum temperatures are more vital for night-time and it is natural for there to be a rise and fall between day and night and between the seasons.

**LIGHT:** Orchids do not like bright light, in the rainforests only dappled light will reach them through the leafy canopy. Direct sun, especially in summer, can burn their leaves quite easily so keep them in dappled shade during the warmest months. In winter when the sun is not so strong, full light is fine and indeed necessary to help them to flower well the following season.

**WATERING & HUMIDITY:** Rainforests are naturally humid places so to create this at home you can grow other suitable companion plants such as ferns and air plants with your orchids. Misting the foliage and aerial roots several times a week, especially in warmer conditions will help the humidity. Take care when misting Phalaenopsis however that the water does not collect in the crown of the plant. Stand the pots on damp pebbles and the moisture will evaporate around the plants. When it comes to actually watering the plants, do not rely on them taking up water from underneath the pot as this can lead to the compost becoming too wet. Instead take your plant to the sink and water from above, letting it run through the open bark-based compost. This is usually done 1 - 2 times a week with a little orchid fertiliser every 2nd or 3rd watering.

Avoid standing your orchids anywhere too hot and dry in the home. Directly above a radiator or television can provide a lot of dry heat, which simply dehydrates the plants more quickly. A bathroom or kitchen can often be the best places as these naturally are a little more humid.

Many houses now have conservatories attached to them and these can make ideal orchid growing areas. Shade, ventilation and humidity for summer and insulation and heating for winter are necessary though, so a few adjustments are usually required to make the conservatory “orchid friendly”. If these changes are not made then a conservatory can be quite desert-like with hot, bright and dry summers and cold winters, far from ideal for orchids.

Clean your orchids as well as your furniture! Household dust will collect on their leaves so wipe them regularly to keep them healthy and looking good.

*By Sara Rittershausen, Burnham Nurseries [www.orchids.uk.com](http://www.orchids.uk.com)*

**Cultural pages for specific genera are available on the BOC website.**

## Orchid Pests and Diseases

Pests and diseases cause serious damage, reduce plant vigour, flower count and quality. The plant may die.

### Prevention

Optimum culture creates healthy orchids that are more resistant to infection. Prevention is preferable to eradication.

Cultural dos and don'ts include: good greenhouse hygiene (sterile tools – pots etc), avoidance of overcrowding, morning watering, ensuring plants are dry for nightfall, segregation of new plants, constant vigilance - early detection, treatment and quarantine/disposal of infected plants. Prevention is more important now than ever as most systemic insecticides are no longer available.

### Common pests

#### Scale Insect

*Boisduval* is a hard scale from tropical America commonly found in collections. It can seriously debilitate or kill if not controlled quickly. It mainly attacks cattleyas and phragmipediums. Early detection is difficult as it is concealed under sheaths, leaves and pseudobulbs.

First indication is yellow patches on the leaf caused by the adult female feeding, with corresponding circular cream coloured scale on the underside of the leaf. Eggs are laid under the scale which protects them from insecticides and predators. These hatch into mobile nymphs/crawlers which are vulnerable to sprays. Immature males form a white cottony mass, often mistaken for mealy bugs, although quite different in appearance- white, narrow and elongate.

**Brown scale** also attacks orchids but is easier to eradicate.

#### Control and Eradication of Scale Insect

Control methods are most effective against crawlers for about 2 weeks. Horticultural oils and insecticidal soaps are effective for suppression but are unlikely to eradicate.

Light infestation – remove visible scales with methylated spirit and cotton wool bud. Remove all sheaths to check for scale underneath.

Severe infestation – spray with systemic insecticide, the only readily available one is Bug Clear Ultra. Alternatively use SB Plant Invigorator and Bug Killer (SBPI) at 7-14 day intervals at least 3x, to eliminate nymphs as they hatch. Or use a horticultural oil. Repot and isolate.

Resistance to insecticides is an increasing problem. Changes of insecticide and treatment methods are recommended. SBPI has a physical mode of action and is unlikely to cause resistance.

Despite regular scheduling of control methods eradication is often unsuccessful and the only option is disposal of the plant.

Yellow patches from  
Boisduval scale



Boisduval scale developmental stages: 1. crawlers, 2. mature females, 3. immature males, 4. mature males



Red Spider Mite



Mealy Bug  
adults and immatures

**Mealy Bug** This is a soft scale, a common serious pest resembling a small white woodlouse. It attacks all orchids, especially *Phalaenopsis* and *Paphiophedilum* and seriously weakens them. The main signs are fluffy white wax and sooty moulds on leaves. It has a white waxy protective coating and is concealed under leaves, sheaths, flowers and compost. Unlike hard scale it is very mobile and can spread rapidly.

**Treatment** As for Scale. If SBPI is used, spray once and again one day later, then at weekly intervals.

**Spider Mite** Very small, sap sucking mite. It is invisible to the naked eye, but can be seen with a magnifying glass. Causes mottled leaves and a silvery appearance underneath. It progresses to webs if a severe infestation and particularly affects cymbidiums and oncidiums.

**Treatment** Increase humidity. Mites like hot, dry conditions. Spray with Spider mite SMC control spray, or Neem Oil or a fatty acid or SB Plant Invigorator. With SBPI spray 2 or 3 times at 2 or 3 day intervals then at weekly intervals

Biological control - Phytoseiulus is an alternative (used without insecticide) but is variably effective.

**Aphids** These are not a serious pest except on *Masdevallia*, where they can spread virus. Treat with contact insecticide.

**Thrips** Very small mobile black sap sucking insects, easily overlooked and most often seen on the flowers. They cause serious damage mainly to the flowers and buds where they hide and feed. Flower damage can mimic viral colour break. They also cause orange/ brown marks and blackish excrement on leaves. They are very difficult to eradicate as they have six stages in their life cycle and are only easily killed in the adult flying insect stage. Also they hide in places where they don't get a contact dose of insecticide.

**Treatment** Spray the buds and flowers every 3 or 4 days for several weeks with an insecticide that contains Spinosad, Deltamethrin or Lambda Cyhalothrin, after which a weekly spray should be sufficient.

Geoffrey Hands recommends the use of a compost drench of Scott's Vine Weevil Killer to kill pupae in the compost. Blue sticky traps are also useful for detection.



Thysanoptera, Thrips



## Diseases caused by Bacteria and Fungi.

### Black Rot.

Fungal rot affects all orchids especially cattleyas. Infected areas appear black and watery.

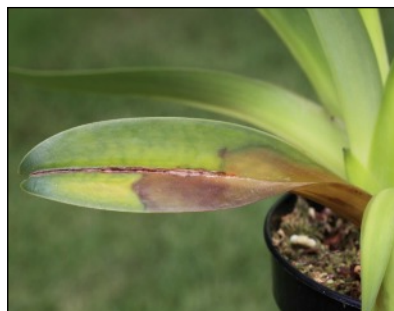
### Bacterial Soft Rot (*Erwinia carotovora*)

This affects most orchids.

### Bacterial brown rot (*Erwinia cyripedii*)

This affects *Phalaenopsis*, *Paphiopedilum* and *Phragmipedium*.

These infections spread rapidly and if they reach the crown or the stem can kill the plant. If treated early plants can be saved, so vigilance is essential. Rot appears brown/black, **watery** and may smell. Infection can become systemic and therefore incurable.



An example of rot found on a  
*Paphiopedilum parishii*

### Prevention

Good air movement, ensure leaves and growths are dry at night. Calcium is a key nutrient in prevention of bacterial/fungal problems. Always use a fertiliser that contains Calcium and top dress the compost with Oyster Shell.

### Treatment

Remove infected leaf or whole growth for basal rot. Keep plant drier and place under a fan. Repot if infection is severe.

### Fungal Infection

Spray with Fungicide.

**Bacterial Infection** – treat with cinnamon. If unsure of cause of infection use fungicide and cinnamon.

### Slugs and snails

Treatment – Use Scott's Slug Clear Liquid. Vigilance and removal after dark.

### Virus

Common in collections. *Cymbidium* mosaic (CyMV) affects 1 in 5 plants. *Odontoglossum* ringspot (ORSV) occurs 1 in 100.

The most frequent symptoms are necrotic or chlorotic spots and streaks. Flowers may show colour break. It is difficult to diagnose virus by appearance alone, as there are many other causes for these symptoms. The plant appears unhealthy. Diagnosis is confirmed by a laboratory Enzyme –linked immunosorbent assay test (ELISA). Many orchids that carry virus show no symptoms but can infect other plants. There is no effective treatment, discard or isolate. CyMV and ORSV Viruses are not spread by insects. *Masdevallia* can be infected by aphids. Viruses are spread by infected cutting tools, pots etc. Sterilisation of all tools and good greenhouse hygiene is essential. Avoid overcrowding and assume all plants could be infected.

**NB. All Pesticides recommended in this article are available at the time of writing. However, laws for insecticides are changing rapidly and insecticides available now may be banned in the future.**

*By Hilary Hobbs*

# Orchid Pests and Infections

## Which Spray To Use With Which Pest

**NB Laws for insecticides are changing rapidly and insecticides available now may be banned in the future.**

Active Ingredient	Product Name	Aphids	Red Spider Mite	Mealy Bug	Scale	Thrips
Fatty Acids and Plant Oils	Vitax Plant Guard Pest & Disease Control	+	+			
	Bug Clear for Fruit & Veg Concentrate	+	+	+	+	+
	Neem Oil	+	+	+	+	
	Doff Universal Bug Killer	+	+			
Acetamiprid Systemic Insecticide	Scott's Bug Clear Ultra (Gun or concentrate)	+	+	+	+	
	Scott's Vine Weevil Killer					+
Lambda Cyhalothrin	Westland Resolva Bug Killer	+				+
Deltamethrin	Provanto Ultimate Vegetable & Fruit Bug Killer	+		+		+
	Baby Bio Houseplant Bug Killer	+		+		+
	Provanto Ultimate Bug Killer	+		+		+
Plant Invigorators	SB Plant Invigorator and Bug Killer	+	+	+	+	
	SMC Spider mite Control (spray or concentrate)	+	+			
Pyrethrum	Bug Clear Gun for fruit and veg	+	+	+	+	+
	Bug Clear Ultra 2 Gun or Concentrate	+	+	+	+	+



# All that's new in orchids from the world's oldest authority



The quarterly supplement to Sander's List of Orchid Hybrids, supplied by the RHS as International Cultivar Registration Authority, is also available

- **Four issues without** the Orchid Hybrid List, UK £29 Overseas airmail **£37**
- **Four issues with** the Orchid Hybrid List, UK £34 Overseas airmail **£44**

Subscribe online or call us on the number below

***The Orchid Review*** is essential reading if you have a passion for orchids. It is the oldest and most influential orchid magazine in the world. Each of the four issues a year is packed with a range of fascinating, inspirational articles:

- **Profiles of orchid genera, species and hybrids**
- **Orchids in the wild, and conservation projects**
- **Techniques for growing and propagating orchids**
- **Notable orchid enthusiasts and nurseries**
- **First descriptions of new orchids**
- **RHS orchid awards with cultivation advice**
- **World news, event finder, book reviews and more**



**Website:** [www.rhs.org.uk/orchidreview](http://www.rhs.org.uk/orchidreview)  
**Tel:** +44 (0)20 3176 5810 **Email:** [membership@rhs.org.uk](mailto:membership@rhs.org.uk)

UP TO  
30% OFF  
ONLINE

THE UK'S LEADING  
MANUFACTURER OF  
**GREENHOUSE HEATERS,  
THERMOSTATS & GROWLIGHTS**



**Simply Control**

Est 1982

**NEW FREE** explanatory catalogue  
for professional and amateur  
growers alike.

- Includes:
- Automated Watering Systems
  - Hydrofoggers ● Shading & Fixings ● Propagation
  - Ventilation ● **New Digital** Heaters + Thermostats
  - Soil Warming Cables ● Red LED Lights etc

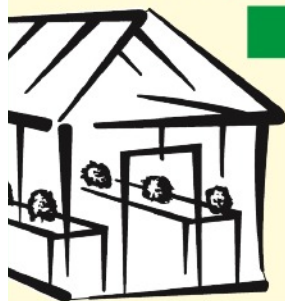
CALL NOW! **01796 482 128** (24 HOURS)

**PLEASE QUOTE SC330 WHEN PHONING**

OR SHOP ONLINE @

[www.simplycontrol.co.uk](http://www.simplycontrol.co.uk)

5, Sawmill Yard, Blair Atholl, PH18 5TL





## Support your British Orchid Nurseries

(Inclusion in this list or as an advertisement  
does not imply an endorsement by the BOC)

### **Burnham Nurseries**

Forches Cross, Newton Abbot, Devon TQ12 6PZ.

Tel: 01626 352233 Web: [www.orchids.uk.com](http://www.orchids.uk.com)

### **Butterfields Pleiones**

Harvest Hill, Bourne End, Buckinghamshire SL8 5JJ.

Tel: 01628 525455

### **Dave Parkinson Plants**

4, West Bank, Carlton, Goole, East Yorkshire DN14 9PZ

Tel/Fax : 01405 860693 Web: [www.daveparkinsonplants.co.uk](http://www.daveparkinsonplants.co.uk)

### **Elite Orchids**

Email: [info@eliteorchids.co.uk](mailto:info@eliteorchids.co.uk)

Facebook: [www.facebook.com/eliteorchids](http://www.facebook.com/eliteorchids)

Tel: 07836 207522 Web: [www.eliteorchids.co.uk](http://www.eliteorchids.co.uk)

### **Equatorial Plant Company**

The Dovecote, Newgate, Barnard Castle DL12 8NW

Tel: 01833 908127 Email: [equatorial9@gmail.com](mailto:equatorial9@gmail.com)

Web: [www.equatorialplants.com](http://www.equatorialplants.com)

### **Heritage Orchids**

4, Hazel Close, Marlow, Buckinghamshire SL7 3PW

Tel: 01628 486640 Email: [mtalbot@talktalk.net](mailto:mtalbot@talktalk.net)

Web: [www.heritageorchids.co.uk](http://www.heritageorchids.co.uk)

### **A J Keeling & Sons**

Grange Nurseries, North View Road, Westgate Hill,

Bradford, West Yorkshire BD4 6NS

Tel: 01274 682120 Email: [johnkeeling@tiscali.co.uk](mailto:johnkeeling@tiscali.co.uk)

### **Laneside Hardy Orchid Nursery**

74, Croston Road, Garstang, Preston PR3 1HR. Tel: 01995 605537

Email: [jcrhutch@aol.com](mailto:jcrhutch@aol.com) Web: [www.lanesidehardyorchids.com](http://www.lanesidehardyorchids.com)

**Laurence Hobbs Orchids Ltd** Bailiffs Cottage Nursery, Hophurst Lane,  
Crawley Down, West Sussex RH10 4LN. Tel: 01293 561029

Mobile: 07961 350053 Email: [lhorchids1@btinternet.com](mailto:lhorchids1@btinternet.com)

Web: [www.laurencehobbsorchids.co.uk](http://www.laurencehobbsorchids.co.uk)

**Malcolm Perry Orchids**

Tel: 01454 773055

298, Park Lane, Frampton Cotterell, South Gloucestershire BS36 2BL

**Orchid Alchemy**

5, Bourne Road, Corby Glen, Grantham NG22 4NR. Tel: 07867 919935

Email: [Andrew@orchidalchemy.co.uk](mailto:Andrew@orchidalchemy.co.uk) Web: [www.orchidalchemy.com](http://www.orchidalchemy.com)**Orchid Botanics** Bristol based Web: [www.orchidbotanics.co.uk](http://www.orchidbotanics.co.uk)Contact via Linktree at - <https://linktr.ee/OrchidBotanics>**Orchids by Post Ltd.** Flowervision Nurseries, Spout Lane,

Stanwell Moor, Middlesex TW19 6BN Tel: 020 3393 8504

Email: [info@orchidpost.co.uk](mailto:info@orchidpost.co.uk) Web: [www.orchidpost.co.uk](http://www.orchidpost.co.uk)**Orchid Meadow** 14, Cullesden Road, Kenley, Surrey CR8 5LREmail: [anthony.heys@sky.com](mailto:anthony.heys@sky.com) Web: [www.orchidmeadow.co.uk](http://www.orchidmeadow.co.uk)**Phalaenopsis And More** Website: [www.phalaenopsisandmore.co.uk](http://www.phalaenopsisandmore.co.uk)

60, Doveney Close, Orpington, Kent BR5 3WF Tel: 07951 070 637

Email: [info@phalaenopsisandmore.co.uk](mailto:info@phalaenopsisandmore.co.uk)**Phoenix Orchids**

Tel: 01422 362509

Pennine House, 50, Pinnar Lane, Southowram, West Yorkshire HX3 9QT

**Royden Orchids**

Perks Lane, Prestwood, Bucks, HP16 OJD

Tel: 01494 863224

Email: [royden.orchids@gmail.com](mailto:royden.orchids@gmail.com)**Spicesotic Plants** (tropical plants and orchids online)

9, Newpark, Castle Hedingham, Halstead, CO9 3HH tel: 07875035181

web: [www.spicesoticplants.co.uk](http://www.spicesoticplants.co.uk) Email: [spicesoticplants@hotmail.com](mailto:spicesoticplants@hotmail.com)**Springwood Pleiones**

8, Tredgold Avenue, Bramhope, Leeds LS16 9BU Tel: 0113 2301158

Email: [Ken@pleiones.com](mailto:Ken@pleiones.com) Web: [www.pleiones.com](http://www.pleiones.com)**Orchid Sundries etc.****Growth Technology Ltd.** Orchid Focus products

Great Western Way, Taunton, Somerset TA2 6BX

Email: [gcsales@growthtechnology.com](mailto:gcsales@growthtechnology.com) Web: [www.focus-on-plants.com](http://www.focus-on-plants.com)**Just in Glass**

The Old Brew House, Houghton Lodge and Gardens,

North Houghton, Stockbridge, Hants SO20 6LQ.

Tel: 07910 245690 Email: [andy@justinglass.co.uk](mailto:andy@justinglass.co.uk)

**Orchid Supplies** Nottingham, England, UK  
Tel: 07910 870288 Email: [info@orchidsupplies.co.uk](mailto:info@orchidsupplies.co.uk)  
Web: [www.orchidsupplies.co.uk](http://www.orchidsupplies.co.uk)

**Keith's Plant Books** Keith Larkin, 91, Station Road, Great Bowden,  
Market Harborough, Leics. LE16 7HL Tel: 07770 608930  
Web: [www.keithsplantbooks.co.uk](http://www.keithsplantbooks.co.uk) Email: [keith@keithsplantbooks.co.uk](mailto:keith@keithsplantbooks.co.uk)

**LBS Worldwide Ltd** Standroyd Mill, Cottontree Lane, Colne, BB8 7BW  
Tel: 01282 873333 Web: [www.lbsbuyersguide.co.uk](http://www.lbsbuyersguide.co.uk)

**Orchid Accessories**  
61, Stanwell Lea, Middleton Cheney, Banbury. Oxon. OX17 2RF.  
Telephone 01295 712159 Web: [www.orchidaccessories.co.uk](http://www.orchidaccessories.co.uk)

**Simply Control**  
5, Sawmill Yard, Blair Atholl, Perthshire, Scotland, PH18 5TL  
Tel: +44 (0)1796 482 128 Fax: +44 (0)1796 482 111  
Web: [www.simplycontrol.co.uk](http://www.simplycontrol.co.uk) email: [enquiries@simplycontrol.com](mailto:enquiries@simplycontrol.com)



# Orchid Botanics

Bristol based Orchid Botanics is a specialist retailer of orchid species. With a range of over 200 different species at any one time, from most regions of the world, we stock the rare, unusual and the exotic. There is an orchid available for all growing conditions.



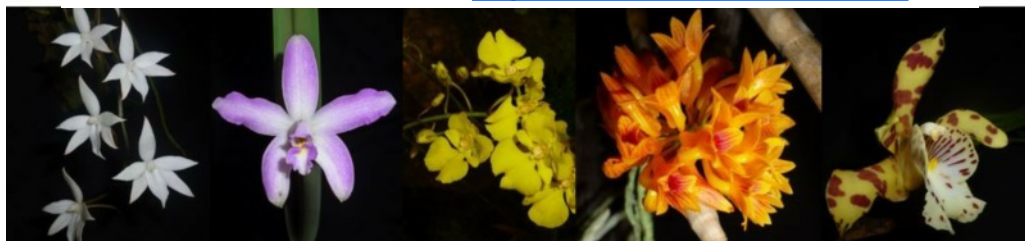
Linktree QR code



[www.orchidbotanics.co.uk](http://www.orchidbotanics.co.uk)

Call or WhatsApp; 07952 665 327. Snapchat, treysanders484

Contact via Linktree at - <https://linktr.ee/OrchidBotanics>



## Diary of Events 2021

[www.british-orchid-council.info](http://www.british-orchid-council.info)

**Due to the Covid19 pandemic this list is extremely limited, and it is probable that some events early in the year will not take place.**

**Please refer to the BOC website Diary of Events, or the local society website for updates nearer the time.**

**Feb 27<sup>th</sup>** South West Orchid Society Annual Orchid Show **CANCELLED**

Contact: <mailto:msaunders1@mail105.co.uk>

**Feb 27<sup>th</sup>** Bournemouth Orchid Society Spring Show **CANCELLED**

Allendale Centre, Hanham Road, Wimborne, Dorset BH21 1AS

12.00 noon - 4.30pm Contact: [show@bournemouthorchidsociety.org.uk](mailto:show@bournemouthorchidsociety.org.uk)

**Mar 6<sup>th</sup>** Cheltenham & District Orchid Society Annual Show **CANCELLED**

Contact: [alanc@xmera.co.uk](mailto:alanc@xmera.co.uk)

**Mar 6<sup>th</sup>** Wessex Orchid Society Annual Spring Show - **CANCELLED**

Portchester Community School, Whitehart Lane, Portchester PO16 9BD

12.00 noon - 4.30pm Contact: [hon.secretary@wessexorchidsociety.org.uk](mailto:hon.secretary@wessexorchidsociety.org.uk)

**Apr 9 - 11<sup>th</sup>** RHS Garden Hyde Hall Spring and Orchid Show

Creephedge Lane, Rettendon, Chelmsford, Essex CM3 8RA

10.00am - 5.00pm

**Apr 25<sup>th</sup>** Cornwall Orchid Society Annual Show

Chacewater Village Hall, Chacewater, Cornwall, TR4 8PZ

11.00am – 4.00pm Contact: [nicholla.orchid@outlook.com](mailto:nicholla.orchid@outlook.com)

**May 1<sup>st</sup>** Devon Orchid Society 45th Annual Show

Budleigh Salterton Public Hall, Station Road, Budleigh Salterton,

Devon EX9 6RJ

10.30am - 4.00pm Contact: [nwakley@googlemail.com](mailto:nwakley@googlemail.com)

**May 8<sup>th</sup>** Orchid Study Group Orchid Day

Aberglasney Gardens, Llangathen, Carmarthenshire SA32 8QH

10.00am - 5.00am Contact: Lynne Harrendence

[lynne.harrendence@resqnet.co.uk](mailto:lynne.harrendence@resqnet.co.uk)

Visit our website: [www.orchidstudygroup.org.uk](http://www.orchidstudygroup.org.uk) nearer the time for list of traders

**May 2<sup>nd</sup> & 3<sup>rd</sup>** Raby Castle Orchid Show **CANCELLED**

**May 15 - 16<sup>th</sup>** Scottish Orchid Society Glasgow Botanic Gardens Orchid Fair

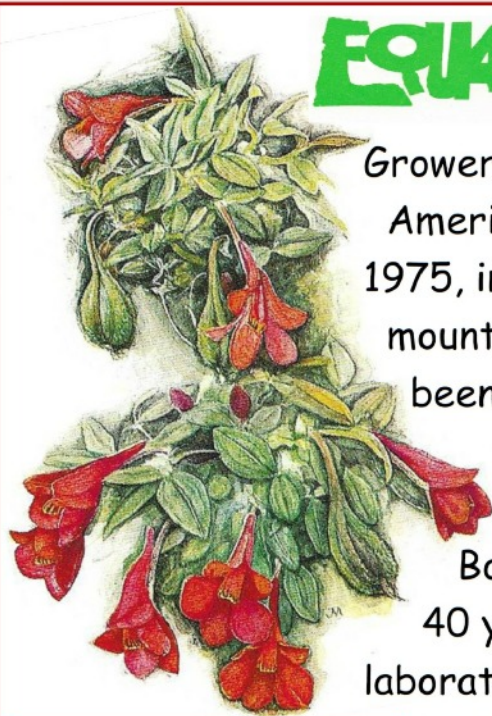
Kibble Palace, Glasgow Botanic Gardens, Glasgow G12 0UE

10.00am – 6.00pm, Sunday 10.00 - 5.00pm

Contact: Alan Mackenzie [gen.secretary@scottishorchid.org](mailto:gen.secretary@scottishorchid.org)



# EQUATORIAL PLANTS



*Dendrobium cuthbertsonii*  
by Jillian McDougall

Growers of New Guinea and South American miniature orchids since 1975, in flask or potted and mounted young plants. We have been providing orchid species for beginners, specialists, Commercial nurseries and Botanical Gardens for over 40 years. Equatorial Plants is a laboratory producing seedlings in bottles or 'flasks'. But we also have a range of species from our extensive lists that are 'established' or potted, and in some cases mounted on bark in the way they would grow in nature on the branches of trees.

Ask for lists from: [equatorial9@gmail.com](mailto:equatorial9@gmail.com)

See species on: [www.equatorialplants.com](http://www.equatorialplants.com)

**Equatorial Plants, The Dovecote,  
Newgate, Barnard Castle,  
DL12 8NW Tel: 01833 908127  
Open: By Appointment Only**

**A supplier of orchid flasks to the  
British Orchid Council**



*Sophronites coccinea*

**May 18 - 23<sup>rd</sup>** RHS Chelsea Flower Show  
Royal Hospital Chelsea, Royal Hospital Road, London SW3 4SR  
8.00am - 8.00pm, Sunday 8.00am - 5.30pm

**Jun 5 - 6<sup>th</sup>** The North of England Orchid Society Annual Show  
Barton Village Hall, PR3 5AA, the A6 north of Preston  
10.30am - 3.30pm Contact: Via website form <http://orchid.org.uk/email.htm>

**Jun 18 - 20<sup>th</sup>** Malvern International Orchid Show **CANCELLED**

**Jul 24 - 25<sup>th</sup>** BOC Congress, Southport **CANCELLED**

**Jul 31 - Aug 1<sup>st</sup>** Harrogate OS - Orchids for Everyone weekend 10am - 4pm  
The Bramall Learning Centre, RHS Gardens Harlow Carr, Harrogate HG3 1QB  
Contact: [ivor.pawson@sky.com](mailto:ivor.pawson@sky.com)

**Sep 4 - 5<sup>th</sup>** Orchid Study Group Welsh Orchid Festival  
Aberglasney Gardens, Llangathen, Carmarthenshire SA32 8QH  
10.00am Saturday & Sunday - 5pm Saturday, 4pm Sunday  
Contact: [lynne.harrendence@resqnet.co.uk](mailto:lynne.harrendence@resqnet.co.uk)  
For full list of traders and talks, visit our website closer to the event:  
[www.orchidstudygroup.org.uk](http://www.orchidstudygroup.org.uk)

**Sep 5<sup>th</sup>** Darlington Orchid Society Annual Durham Show (Fingers Crossed)  
Josephine Butler College, Durham City DH1 3DF  
10.00am - 4.00pm Contact: Len Gray [marglenuk@yahoo.co.uk](mailto:marglenuk@yahoo.co.uk)

**Sep 25<sup>th</sup>** Bournemouth Orchid Society Autumn Show  
Allendale Centre, Hanham Road, Wimborne, Dorset BH21 1AS  
12.00 - 16.30 Contact: Chris Broomfield  
[show@bournemouthorchidsociety.org.uk](mailto:show@bournemouthorchidsociety.org.uk)

**Oct 23<sup>rd</sup>** Birmingham & Midland OS Annual Orchid Show  
United Reform Church, 1, Bassington Avenue, Sutton Coalfield B73 6AA  
10.30am - 4.30pm Contact: Bob Grove [r.grove337@outlook.com](mailto:r.grove337@outlook.com)

**Fingers crossed!**

**Dates for BOC Judging Symposiums 2021**

**Saturday 15th May: South Muskham Village Hall**  
**10.00am - 4.00pm**

Main Street, South Muskham, Newark, Nottinghamshire NG23 6EE.

**A second symposium will be planned for later on in the year when  
we can assess how things develop.**

Contact Jean & Chris Barker: 01642 654748 [cjbandjb@ntlworld.com](mailto:cjbandjb@ntlworld.com)

## RHS Orchid Committee Programme 2021

Secretary: Jill Otway [jillotway@rhs.org.uk](mailto:jillotway@rhs.org.uk)

**Please note, all meeting dates are provisional.**

Date	Venue
Friday 9 <sup>th</sup> April 1.00pm TBC	Meeting during Spring Launch with Orchid Show at Hyde Hall
Monday 17 <sup>th</sup> May 8.00am TBC	Meeting during the RHS Chelsea Flower Show
Saturday 31 <sup>st</sup> July 1.00pm TBC	RHS Garden Harlow Carr with Harrogate & North of England OS

**Hopefully, extra dates will be added as the year progresses.**



### **BOC Photographic Competition 12th Place.**

*Restrepia purpurea*  
'Rayas Vinto Minto'  
by Marian Saunders  
from the South West  
Orchid Society



Laarsebeekdreef 4  
2900 Schoten  
Belgium

[info@akerne-orchids.com](mailto:info@akerne-orchids.com)  
[www.akerne-orchids.com](http://www.akerne-orchids.com)

---

Belgium's Leading Botanical Orchid Nursery

---

Our own specially developed  
RAIN MIX® fertiliser  
is the best on the Market!



---

Visit [www.rainmix.eu](http://www.rainmix.eu)  
for details of our UK distributors

---

# Members of the British Orchid Council

## **Birmingham & Midland Orchid Society**

**Contact: Mr Bob Grove**

**email:** [r.grove337@outlook.com](mailto:r.grove337@outlook.com)

**Venue:** Friends Meeting House, George Road, Edgbaston, Birmingham B15 1JP

**On:** Second Saturday in the month. 3.00pm No meeting in April or August.

## **Bournemouth Orchid Society**

**Contact: Ms Marian Grimes**

**email:** [mazza999@hotmail.com](mailto:mazza999@hotmail.com)

**Website:** <http://www.bournemouthorchidsociety.org.uk>

**Venue:** Bournemouth Natural Science Society, 39 Christchurch Road, Bournemouth, Dorset BH1 3NS

**On:** Last Friday each month at 7.30pm . . . except February & September (Shows), July & December (other venues) - see web site

## **Bristol & West of England Orchid Society**

**Contact: Mr Brian Tomlinson**

**email:** [jt007F1810@blueyonder.co.uk](mailto:jt007F1810@blueyonder.co.uk)

**Website:** [www.bristolorchids.club](http://www.bristolorchids.club)

**Venue:** The Village Hall, Stone, Gloucestershire GL13 9LE

**On:** Second Saturday of each month at 2.30pm

## **British Paphiopedilum Society**

**Contact: Mrs Linda Phillips**

**email:** [Linda@justinglass.co.uk](mailto:Linda@justinglass.co.uk)

**Website:** <http://www.paphiopedilum.org.uk>

**Venue:** Ramada Hotel, Solihull

**On:** Annual Meeting in January

## **Cambridge Orchid Society**

**Contact: Mrs Susan Johnson**

**email:** [p.johnson63@btinternet.com](mailto:p.johnson63@btinternet.com)

**Website:** <http://www.cambridgeorchidsociety.btck.co.uk>

**Venue:** Harston Village Hall, 20 High Street, Harston, Cambridge CB22 7PX

**On:** First Friday in the month 7.30 to 10.00 pm (no meetings held in August)

## **Cardiff & Vale of Glamorgan Orchid Society**

**Contact: Mrs L Britton-Cumming**

**email:** [lizecumming@sky.com](mailto:lizecumming@sky.com)

**Venue:** The Old School, 1, South Road, Sully, Vale of Glamorgan, CF64 5TG

**On:** 1st Saturday of the month 2.00 - 4.00pm

## **Central Orchid Society**

**Contact: Mr Roger Hill**

**email:** [rajhill@hotmail.co.uk](mailto:rajhill@hotmail.co.uk)

**Website:** <http://www.centralorchidsociety.org.uk>

**Venue:** The Wrottesley Room, Perton Library, Severn Drive, Perton, Wolverhampton, WV6 7QU

**On:** Last Saturday of most months at 2.00pm



**Cheltenham & District Orchid Society****Contact: Mr Alan Cursue****email:** [secretary@cheltenhamorchids.org](mailto:secretary@cheltenhamorchids.org)**Website:** <http://www.cheltenhamorchids.org>**Venue:** St. John's Church Hall, St. John's Avenue, Churchdown, Glos, GL3 2DA.**On:** Fourth Tuesday of each month at 7.30pm, Except December and other dates as indicated in programme.**Cheshire and North Wales Orchid Society****Contact: Mr Iain Wright****email:** [contact@canwos.org.uk](mailto:contact@canwos.org.uk)**Website:** <http://www.canwos.org.uk>**Venue:** St Mary's Church Hall, Overleigh Road, Handbridge, Chester CH4 7HL**On:** Third Friday of the month 7.00 - 10.00pm. We are holding Zoom meetings for the immediate future. See website for details. None members very welcome.**Chester Zoo****Contact: Mr Philip Esseen**

Chester Zoological Gardens, Upton-by-Chester, Cheshire, CH2 1LH

**email:** [p.esseen@chesterzoo.org](mailto:p.esseen@chesterzoo.org)**Cornwall Orchid Society****Contact: Nicholla Ingram****email:** [nicholla.orchid@outlook.com](mailto:nicholla.orchid@outlook.com)**Croydon & District Orchid Society****Contact: Mr Michael Penney****email:** [membership@croydonanddistrictorchidsociety.co.uk](mailto:membership@croydonanddistrictorchidsociety.co.uk)**Website:** <http://www.croydonanddistrictorchidsociety.co.uk>**Venue:** Wallington Reformed Church, Stanley Park Road, Wallington, SM6 0EU**On:** 1st Tuesday Monthly at 7.30pm, NO MEETINGS in January**Darlington & District Orchid Society****Contact: Mr Len Gray****email:** [marglenuk@yahoo.co.uk](mailto:marglenuk@yahoo.co.uk)**Website:** <http://www.darlingtonos.org>**Venue:** Sadberge Village Hall, Darlington**On:** 2nd Wednesday of the Month. 7.00pm The hall is just of the A66 after you leave Darlington heading towards Middlesbrough**Devon Orchid Society****Contact: Mrs Nicola Wakley****email:** [nwakley@googlemail.com](mailto:nwakley@googlemail.com)**Website:** [www.devon.ukos.com](http://www.devon.ukos.com)**Venue:** Burnham Nurseries, Forches Cross, Newton Abbott, Devon TQ12 6PZ**On:** 3rd Sunday of the month (with exceptions) Time: 1.30 for 2.00 - 4.00pm**East Anglia Orchid Society****Contact: Mrs Annette Hansell****email:** [a.ahansell@sky.com](mailto:a.ahansell@sky.com)**Website:** <http://www.osea.org.uk>**Venue:** Hellesdon Parish Hall, Low Rd., Hellesdon, Norwich NR6 5AT**On:** 3rd Friday each month at 7.30pm

**East Midlands Orchid Society****Contact: Mr Paul Sentence****email:** [paul.sentence@hotmail.com](mailto:paul.sentence@hotmail.com)**Website:** <http://www.eastmidlandsortchidsociety.co.uk>**Venue:** Bottesford Village Hall, Bottesford, Nottinghamshire NG13 0BG**On:** Third Sunday of the Month at 2.00 - 4.30pm, No meetings in August  
Follow East Midlands Orchid Society on Twitter - [@pask\\_steve](#)**Eric Young Orchid Foundation****Contact: Mr Chris Purver**

Eric Young Orchid Foundation, Victoria Village, Trinity, Jersey, Channel Islands, JE3 5HH

**email:** [chris@eyof.co.uk](mailto:chris@eyof.co.uk)**Website:** [www.ericyoungorchidfoundation.co.uk](http://www.ericyoungorchidfoundation.co.uk)**On:** Please phone with reference to opening. (01534 861963)**Essex Orchid Society****Contact: Mrs Moira Tarrant****email:** [moira.tarrant@outlook.com](mailto:moira.tarrant@outlook.com)**Website:** <http://www.essexorchidsociety.org.uk>**Venue:** South Green Memorial Hall, Southend Road, Billericay CM11 2PR**On:** 2nd Saturday Monthly at 1.30 except July, Aug., Dec. 1.30pm - 4.00pm**Glasgow Botanic Garden****Contact: Mr Ewen Donaldson**

General Manager, Glasgow Botanic Garden, 730 Great Western Road, GLASGOW, G12 0UE

**email:** [gbg@land.glasgow.gov.uk](mailto:gbg@land.glasgow.gov.uk)**Website:** <https://www.glasgowbotanicgardens.com>**On:** Open every day**Hardy Orchid Society****Contact: Mrs M Tarrant****email:** [moira.tarrant@outlook.com](mailto:moira.tarrant@outlook.com)**Website:** [www.hardyorchidsociety.org.uk](http://www.hardyorchidsociety.org.uk)**On:** Meetings are for members & their guests only. Talks, discussions and orchid sales.**Harrogate Orchid Society****Contact: Mrs Lorna Pawson****email:** [lorna.pawson@gmail.com](mailto:lorna.pawson@gmail.com)**Website:** <http://www.harrogateorchidsociety.co.uk>**Venue:** RHS Garden, Harlow Carr, Harrogate HG3 1QB**On:** See web site for meeting list for dates**Hinckley & District Orchid Society****Contact: Keith Bates****email:** [orchids1941@yahoo.com](mailto:orchids1941@yahoo.com)**Website:** <http://hinckleydistrictorchidsociety.synthasite.com>**Venue:** Constitutional Club, Chapel St., Barwell, Leicestershire LE9 8DD**On:** 1st Wednesday in the month except July & Aug Start time 8.00pm**King Charles I School****Contact: Mr Philip Seaton****email:** [philipseaton@gmail.com](mailto:philipseaton@gmail.com)**Venue:** Kidderminster, Worcestershire

**Lea Valley Orchid Society****Contact: Mrs Gillian Radley****email:** [gillian.radley@yahoo.co.uk](mailto:gillian.radley@yahoo.co.uk)**Website:** [www.leavalleyorchidsociety.com](http://www.leavalleyorchidsociety.com)**Venue:** Waterford Village Hall, 2, High Rd., Waterford, nr. Hertford, SG14 2PR**On:** Third Wednesday of each month at 7.45pm**North Bucks Orchid Society****Contact: Mrs G Bramham**

25 Leon Avenue, Bletchley, Milton Keynes, Bucks, MK2 2HL

**Tel:** 01908 373880 **email:****Venue:** Rectory Cottages, Church Green Rd, Bletchley MK3 6BJ**On:** First Wednesday each month at 7.45pm No Meeting in August**North East of England Orchid Society****Contact: Mrs Pat McLean****email:** [mcleanpatricia.w@yahoo.co.uk](mailto:mcleanpatricia.w@yahoo.co.uk)**Website:** <http://www.northeastofenglandorchidsociety.co.uk>**Venue:** Bowburn Community Centre, Durham Road, DH6 5AT**On:** Last Tuesday of the Month, 7.15 - 9.30pm Bowburn Community Centre, A177, Durham**North Hampshire Orchid Society****Contact: Mr M Moon****email:** [michaelmoon\\_1@outlook.com](mailto:michaelmoon_1@outlook.com)**Website:** [www.north-hampshire-orchid-society.org.uk](http://www.north-hampshire-orchid-society.org.uk)**Venue:** East Oakley Village Hall, Hill Road, East Oakley, Basingstoke RG23 7JJ**On:** Third Sunday (with exceptions) at 2.00pm Meetings usually finish at around 5.00pm See diary section on society website for details**North of England Orchid Society****Contact: Mr George Barnes****email:** [orchidinfo@orchid.org.uk](mailto:orchidinfo@orchid.org.uk)**Website:** <http://www.orchid.org.uk>**Venue:** Venue variable but monthly meetings usually on the Saturday of the second weekend of the month**On:** Staging to complete by 11.00am, show closes 3.00pm Please consult our website or contact us.**Orchid Society of Great Britain****Contact: Mrs Zane Rappa****email:** [secretary@osgb.org.uk](mailto:secretary@osgb.org.uk)**Website:** <https://www.osgb.org.uk>**Venue:** Napier Hall, Hide Place, Westminster, London SW1P 4NJ**On:** On the first Saturday of each month 1.30 - 4.30pm,  
1.45 - 2.15pm Introductory session for beginners. Guest Speaker 2.40pm**Pleurothallid Alliance****Contact: Mr D Smallman****email:** [donaldsmallman234@btinternet.com](mailto:donaldsmallman234@btinternet.com)**Venue:** Contact Secretary for details of meetings**On:** Meetings are held annually, in September 10.00am - 4.00pm  
Wilnecote Parish Hall, Watling Street, Two Gates, Tamworth, B77 5AD

**Royal Botanic Gardens Kew****Contact: Lara Jewitt**

Tropical Nursery, RBG Kew, Richmond, Surrey, TW9 3AB

**Tel:** 020 8332 5561 **email:** [l.jewitt@kew.org](mailto:l.jewitt@kew.org)

**Website:** [www.kew.org](http://www.kew.org)

**On:** Open all year, see website for opening times, email or phone for reserve collection visits

**Royal Horticultural Society Orchid Committee****Contact: Jill Otway**

RHS Orchid Committee, Horticultural Halls, Vincent Sq., London

Committee Secretary, [jillotway@rhs.org.uk](mailto:jillotway@rhs.org.uk)

**Venue:** RHS Orchid Committee meets at RHS flower shows, botanic gardens, selected society shows and Vincent Square.

**Scottish Orchid Society****Contact: Mr Alan Mackenzie ( Gen Secretary )**

**email:** [gen.secretary@scottishorchid.org](mailto:gen.secretary@scottishorchid.org)

**Website:** <http://www.scottishorchid.org>

**On:** We currently have branches in Edinburgh, Glasgow and Perth.

**Scottish Orchid Society Edinburgh****Contact: Mrs Sarah Hassaine**

**email:** [edinburgh@scottishorchid.org](mailto:edinburgh@scottishorchid.org)

**Website:** <http://www.scottishorchid.org/edinburgh.html>

**Venue:** 2021 meeting venue tba. Refer to website for updated information

**On:** Refer to website. No meetings in July, August or December

**Scottish Orchid Society Glasgow****Contact: Mr Alan Mackenzie ( Gen Secretary )**

**email:** [gen.secretary@scottishorchid.org](mailto:gen.secretary@scottishorchid.org)

**Website:** <http://www.scottishorchid.org/glasgow.html>

**Venue:** Hopkirk Building, Glasgow Botanic Gardens, 730, Great Western Road, Glasgow G12 0UE

**On:** 3rd Monday Monthly at 7.30pm. No meetings, July and August

**Scottish Orchid Society Perth****Contact: Mr Brian Brocklehurst**

**email:** [brian.brocklehurst1@btinternet.com](mailto:brian.brocklehurst1@btinternet.com)

**Website:** <http://www.scottishorchid.org/perth.html>

**Venue:** Village Hall, Pitcairngreen, Nr Perth, PH1 3LR

**On:** Fourth Wednesday monthly @ 1.30pm No meetings June, July & December

**Sheffield & District Orchid Society****Contact: Mrs Carolyn McQueen**

**email:** [carolyn.m.mcqueen@gmail.com](mailto:carolyn.m.mcqueen@gmail.com)

**Website:** <http://www.sheffieldorchids.org>

**Venue:** Sheffield Botanic Gardens Broomhall, Sheffield S10 2LN. Classroom 2

**On:** 2nd Sunday of month 10.00am to 12.30pm

**Solihull & District Orchid Society****Contact: Mr Tjin Ong**

**email:** [tjinong3103@gmail.com](mailto:tjinong3103@gmail.com)

**Website:** [www.solihullorchidsociety.co.uk](http://www.solihullorchidsociety.co.uk)

**Venue:** St George & Teresa Parish Centre, Dorridge B93 8EZ

**On:** 1st Saturday of the Month, open 1.00pm, Speaker 2.30pm No meeting in August. Look out for the 'A' frame board on the pavement




## Join the Orchid Society of Great Britain

Being a member of the Orchid Society of Great Britain opens the door to a world of orchid opportunities. Attend our friendly monthly meetings where you'll find orchids from around the world on display and for sale, lectures and cultural advice. Exhibit in local RHS and international shows or travel to see orchids in their natural habitat. Sit back and immerse yourself in our internationally acclaimed quarterly orchid magazine or a book from our comprehensive library. Meetings take place on the first Saturday afternoon of every month at Napier Hall, Hide Place, Westminster, London SW1P 4NJ.

*Habenaria medusa*  
Photo: Robert Simmons

For more information, visit our website  
[www.osgb.org.uk](http://www.osgb.org.uk)  
or contact our Membership Secretary  
[osgbmembership@yahoo.co.uk](mailto:osgbmembership@yahoo.co.uk)

Follow the OSGB on Facebook  
 [The Orchid Society of Great Britain](https://www.facebook.com/TheOrchidSocietyofGreatBritain)



**South East Orchid Society****Contact: Mrs Karina Sellers****email:** [karinasellers@btinternet.com](mailto:karinasellers@btinternet.com)**Website:** [www.southeastorchidsociety.co.uk](http://www.southeastorchidsociety.co.uk)**Venue:** Ashford Rail Staff Hall, Beaver Road, Ashford, Kent. TN23 7RR**On:** Generally the third Sunday of the month from 2.30pm. Please go to the website for full information.**South Wales Orchid Study Group****Contact: Mrs Lynne Harrendence****email:** [lynn.harrendence@resqnet.co.uk](mailto:lynn.harrendence@resqnet.co.uk)**Website:** [www.orchidstudygroup.org.uk](http://www.orchidstudygroup.org.uk)**Venue:** Aberglasney Gardens, Llangathen, Carmarthenshire SA32 8QH**On:** Saturday, once a month 11.00am to 1.00pm Check our website for Programme of Events**South West Orchid Society****Contact: Mrs Marian Saunders****email:** [msaunders1@mail105.co.uk](mailto:msaunders1@mail105.co.uk)**Venue:** West Monkton Village Hall, Monkton Heathfield, Near Taunton TA2 8NE**On:** 2nd Sunday of the month 2.30 to 5:00 pm**Suffolk Orchid Society****Contact: Mrs Jenny Gage****email:** [roystongage@btinternet.com](mailto:roystongage@btinternet.com)**Website:** <http://suffolkorchid.co.uk>**Venue:** St Michaels Church Centre, The Drift Martlesham, Nr. Ipswich, IP5 3PL**On:** Last Wednesday of month (not Dec, July or August) 7.30pm to 9.45pm**Thames Valley Orchid Society****Contact: Ms Stella Steveni****email:** [stella.steveni@hotmail.com](mailto:stella.steveni@hotmail.com)**Venue:** St. Peters Church Hall, St. Peters Street, Marlow SL7 1NQ**On:** Generally 3rd Friday each month 8.00pm start. Visitors are welcome.**Wessex Orchid Society****Contact: Mrs Lynn Smith****email:** [chairman@wessexorchidsociety.org.uk](mailto:chairman@wessexorchidsociety.org.uk)**Website:** <http://www.wessexorchidsociety.org.uk>**Venue:** Shawford Parish Hall, Shawford SO21 2AA**On:** Second Sat. of month with exceptions 2.00pm. for 2.30pm start, to 5.00pm**West Cornwall Orchid Society****Contact: Mrs Kit Lindsay****email:** [r.lindsay672@btinternet.com](mailto:r.lindsay672@btinternet.com)**Website:** [www.westcornwallorchidsociety.btck.co.uk](http://www.westcornwallorchidsociety.btck.co.uk)**Venue:** Camborne Community Centre, Pendarves Rd, Camborne TR14 8SU**On:** 2nd Sunday of month except August and December 2.00pm**Writhlington School Orchid Project****Contact: Mr Simon Pugh-Jones****Venue:** Writhlington School, Knobsbury Lane, Writhlington, Radstock BA3 3NQ**Tel:** 01761 433581**email:** [spughjones@wsbeorchids.org](mailto:spughjones@wsbeorchids.org)**Website:** [www.wsbeorchids.org](http://www.wsbeorchids.org)**Venue:** Writhlington School, Knobsbury Lane, Radstock, BA3 3NQ

## National Collections of Orchids

Plant Heritage recognise the following National Collections to which members of the public may be admitted at the discretion of the Collection Holder. It is essential to contact the Collection Holder prior to any attempt to visit.

### ***Aerangis & Angraecum* species (miniature)**

**Beth Otway**

Near Guildford, Surrey

Tel: 01483 420989

Email: [beth@pumpkinbeth.com](mailto:beth@pumpkinbeth.com)

Website: [www.pumpkinbeth.com](http://www.pumpkinbeth.com)

### ***Dendrobium***

**Mr E Donaldson**

General Manager, Glasgow Botanic Garden, 730, Great Western Road,  
Glasgow G12 0UE

Tel: 0141 334 2422

Email: [gbg@land.glasgow.gov.uk](mailto:gbg@land.glasgow.gov.uk)

Web Site: [www.glasgowbotanicgardens.com](http://www.glasgowbotanicgardens.com)

### ***Gongora***

**Drs Gary and Maria Firth**

9, Harlands Close, Haywards Heath, West Sussex RH16 1PS

Tel: 01444 413626

Email: [themyrtleman@uwclub.net](mailto:themyrtleman@uwclub.net)

### ***Phragmipedium* (including *Mexipedium*)**

**Mr Arthur L Deakin**

Pomarium Cottage, Back Lane, Halam, Newark NG22 8AG

Tel: 01636 819974

Email: [arthurlomasdeakin@yahoo.co.uk](mailto:arthurlomasdeakin@yahoo.co.uk)

### ***Pleurothallidinae***

**Mr Phil Esseen**

North of England Zoological Society, Upton-by-Chester CH2 1LH

Tel: 01244 650236

Email: [p.esseen@chesterzoo.org](mailto:p.esseen@chesterzoo.org)

Web Site: [www.chesterzoo.org](http://www.chesterzoo.org)

### ***Stanhopea***

**R J Hartley**

Stanhopea, Mill Lane, Wetley Rocks, Stoke-on-Trent ST9 0BN

Tel: 01782 550313

Email: [orchidhartley@hotmail.co.uk](mailto:orchidhartley@hotmail.co.uk)

Web Site: [www.foxdale-orchids.co.uk](http://www.foxdale-orchids.co.uk)

### ***Phalaenopsis* species (miniature)**

**Beth Otway**

Near Guildford, Surrey

Tel: 01483 420989

Email: [beth@pumpkinbeth.com](mailto:beth@pumpkinbeth.com)

Website: [www.pumpkinbeth.com](http://www.pumpkinbeth.com)

Further details may be available from NCCPG Website: [www.nccpg.com](http://www.nccpg.com)



**BOC Photographic Competition 4th Place.** *Epipactis helleborine* by  
Gillian Elsom from the Hardy Orchid Orchid Society



**BOC Photographic  
Competition 5th Place.**  
*Propetalum Mathina*  
by Margaret Grey from  
Darlington Orchid Orchid  
Society



**BOC Photographic Competition 6th Place.** *Cymbidium Apollo*  
by Robert Jones from the Scottish Orchid Society



**BOC Photographic  
Competition 7th Place.**  
*Cephalanthera longifolia*  
by Alan Parfit from the  
Hardy Orchid Society



# WSBE Orchids

## WrithlingtonOrchids

Writhlington School Orchid Project

Writhlington, England | On Etsy since 2020

1,719 Sales ★★★★★

♡ Favourite shop (222)

Buyers are raving! This shop got multiple 5-star reviews in the past 7 days.

SHOP OWNER



Writhlington Orchids

Contact

Items

## Writhlington School Orchid Project Shop

Sort: Most Recent ▾

Search items



All

21

Contact shop owner

1719 Sales

222 Admirers

Report this shop to Etsy



Bulbophyllum stenobulbon (orchid)

£9.00

4 people have this in their basket



Epidendrum centropetalum (Orchid)

£5.00

10 people have this in their basket



Prosthechea baccalis

£20.00

7 people have this in their basket



Platystele misasiana (orchid)

£7.00

8 people have this in their basket



Ornithophora radicans (orchid)

£7.00

3 people have this in their basket



Oncidium longipes (orchid)

£7.00

4 people have this in their basket



Restrepia lankesteri (Orchid)

£6.00



Pleurothallis restrepiodes (orchid)

£5.00

7 people have this in their basket

Visit our website shop at - <https://www.etsy.com/uk/shop/WrithlingtonOrchids>



**BOC  
Photographic  
Competition  
11th Place.**

*Orchis  
masculata*  
by Steve  
Pickersgill  
Hardy Orchid  
Society



# TAKE YOUR LOVE OF SLIPPER ORCHIDS TO THE NEXT LEVEL

- Share your interest and knowledge with fellow members
- Receive a colourful and informative society Journal
- Learn how to grow and show your plants to perfection
- Receive expert advice from experienced fellow growers
- Attend informative society social events



## JOIN TODAY

[www.paphiopedilum.org.uk](http://www.paphiopedilum.org.uk)



# Laurence Hobbs Orchids Ltd

Bailiffs Cottage Nursery, Hophurst Lane,  
Crawley Down, West Sussex RH10 4LN

Web: [www.laurencehobbso orchids.co.uk](http://www.laurencehobbso orchids.co.uk)

Email: [lhorchids1@btinternet.com](mailto:lhorchids1@btinternet.com)

Tel: 01293 561029 or Mobile: 07961 350053

Near M25/M23/Gatwick Airport

- For quality Cattleyas, Paphiopedilums, Phalaenopsis, Dendrobiums, Vandas and Masdevallias.
- Also a range of nursery raised and imported species and hybrids.

Extensive choice, no order too small.

## Plants supplied by mail order.

Please send a sae for black/white stock lists,  
or email us (please include your telephone contact number),  
or ring direct for current stock availability on 07961 350053.

Visitors, Societies/Groups welcome by appointment only. Please ring or email in advance.  
For regular open weekends, please check the website or email us to join our mailing list.

## Laneside Hardy Orchid Nursery

The only specialist hardy orchid  
nursery in the UK offering many  
genera including - Cypripediums  
& Calanthe for the garden;  
British natives for the Alpine  
house and meadow.

Mail order and shows only



[www.lanesidehardyorchids.com](http://www.lanesidehardyorchids.com)

Tel: 01995605537

Email: [jcrhutch@aol.com](mailto:jcrhutch@aol.com)

## Orchid Supplies UK

Meeting Orchid Growers Needs

[www.orchidsupplies.co.uk](http://www.orchidsupplies.co.uk)

Come to Orchid Supplies UK for all your  
Orchid growing products and a friendly  
personal service when you need it.

- ◆ Highest quality orchid products
- ◆ NEW Online shop
- ◆ Quick Communication
- ◆ Safe & Fast delivery
- ◆ Akerne's Rain Mix
- ◆ No order too small
- ◆ 5% discount with coupon code 0505
- ◆ Email: [info@orchidsupplies.co.uk](mailto:info@orchidsupplies.co.uk)
- ◆ Tel: 01159550324 or 07910870288

# The 10<sup>th</sup> Durham Orchid Show

Sunday 5th September 2021 10.00 am - 4.00pm

Josephine Butler College, Durham City DH1 3DF

Stunning displays by orchid societies and sales from leading orchid nurseries.

**The North East's biggest Orchid Show.**

**There is ample free parking near to the college**

**Make a day of it and visit**

the Botanic Garden  
the Oriental museum  
the Cathedral  
the Castle  
etc.

**Admission to  
the Show  
is Free!**

Please  
check nearer  
the time



## Burnham Nurseries

### ORCHID PARADISE

*The UK's premier orchid nursery, we are a unique, family business with 100s of beautiful orchids in flower all year round.*

- Many unusual species & popular hybrids from seedlings to specimens.
- Mail order is our speciality.
- Free email newsletter.
- Orchid Masterclass courses.
- Café Vanilla refreshments & gifts.
- Open Mon-Fri 10-3 for visitors and some weekends please check for the latest opening
- Call us for expert advice on ordering and culture, office open Mon-Fri 9-4.



Visit our website and  
online shop at  
[www.orchids.uk.com](http://www.orchids.uk.com)

Forches Cross, Newton Abbot, Devon, TQ12 6PZ

Tel: 01626 352233 [www.orchids.uk.com](http://www.orchids.uk.com)

Follow us @burnhamorchids







**BOC Photographic Competition 8th Place.** *Dactylorhiza fuchsii*  
by Rita Wood from Darlington Orchid  
Orchid Society



**BOC Photographic Competition 9th Place.** *Dendrobium victoriae-reginae*  
by Iain Wright from the Cheshire & North Wales Orchid Society



# ORCHID ACCESSORIES

[www.orchidaccessories.uk](http://www.orchidaccessories.uk)

Orchid Accessories are the main stockist in the UK of New Zealand Orchid Bark and New Zealand Sphagnum Moss.

We are the European Distributor of Dyna-Gro, the complete nutrients for orchids. Also stocking their new Dyna-Zyme and Dyna-Flush.

Orchid Accessories are the main stockist in the UK of New Zealand Orchid Bark and New Zealand Sphagnum Moss.

We are the European Distributor of Dyna-Gro, the complete nutrients for orchids. Also stocking their new Dyna-Zyme and Dyna-Flush.

New for 2020 we will be stocking a range of Tree Fern Fibre Slabs in different sizes, please see the website for more information.

We are one of the largest orchid mail order companies in Europe with a full range of accessories to suit the the new orchid hobbyist to the experienced orchid grower.

See our web site for a full range of products or call with any enquiries on 01295 712159.

